

BOLIVAR LIBRARY DATA [M]



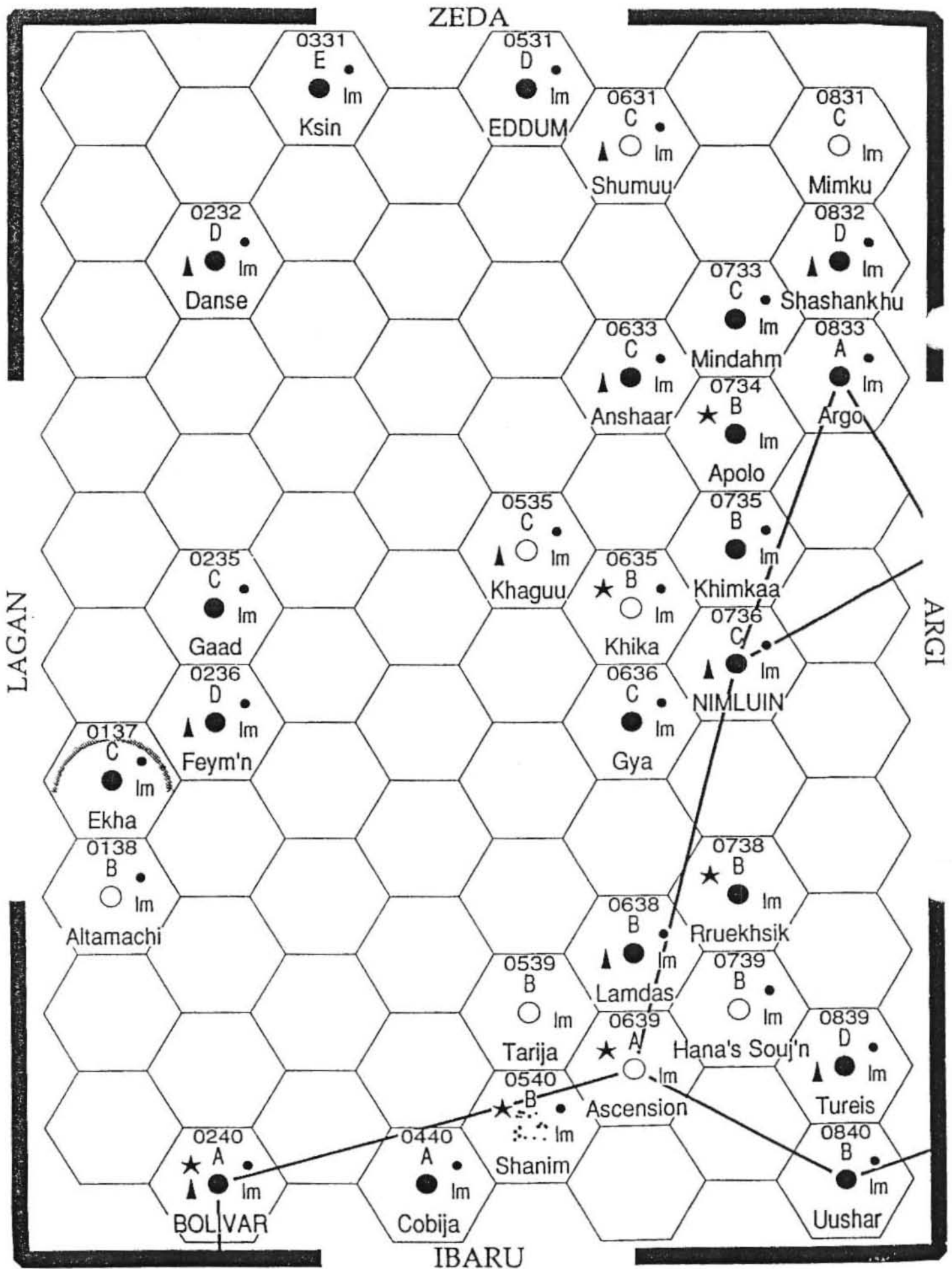
SUBSECTOR DATA

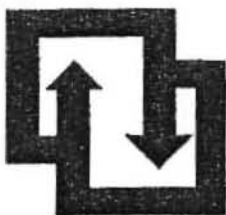
BOLIVAR SUBSECTOR

(Subsector M of Dagudashaag)

This subsector is very sparsely populated with stars - the interior of the subsector is dominated by the Dudin-Bolivar Rift, which forces even jump-2 craft to take a circuitous route from one system to the other via Eddum and the Ninluin Cluster. The astrographical makeup of the region heavily restricted settlement of the region during the Ziru Sirka, the Bolivar system itself was settled by Solomani during the Rule of Man. Bolivar system lies on the Gushemege Jump-1 Main and the fact that it obtains much of its agricultural produce from Gushemege tends to make its people somewhat aloof from the internal affairs of Dagudashaag. Bolivar is regarded as rather a 'troublemaker' by the rest of the sector.

- Ekha 0137 C568310-7 Lo Ni A 904 Im K2 V
- Altamachi 0138 B201420-D Ic Lo Ni Va 112 Im KO VI
- Danse 0232 D9B4743-9 S Ex FI 802 Im K3 V
- Gaad 0235 C778543-8 Ag Ni 103 Im MO V M1 D
- Feym'n 0236 D435875-6 S 224 Im M3 V M0 VI
- BOLIVAR 0240 A78699D-F A HI 814 Im K1V M9D
- Kinhe 0331 E79A687-6 Ni Wa 404 Im K2 V
- Cobija 0440 A775456-D Ni 503 Im K3VI
- EDDUM 0531 D797978-6 Hi In 102 Im M4 V M0 D
- Khaguu 0535 C110530-9 S Ni 712 Im K4V
- Tarija 0539 B20056B-C Ni Va 810 Im M1 III
- Shanim 0540 B000661-C N Na Ni As 803 Im G1V
- Shumuu 0631 C300100-A S Lo Ni Va 202 Im M5 V
- Anshaar 0633 C637334-B S Lo Ni 624 Im G7 V
- Khika 0635 B500021-D N Lo Ni Va 602 Im M9IV M1D
- Gya 0636 C546110-B Lo Ni 412 Im G0V
- Lamdas 0638 B541330-9 S Lo Ni Po 604 Im K7V M7D
- Ascension 0639 A1206AC-F N Na Ni Po De 810 Im M2V
- Mindahm 0733 C4367BA-9 C0 704 Im M1V M6D
- Apolo 0734 B9AA887-E N Ex FI Wa 620 Im M0D
- Khimkaa 0735 B5958A6-7 102 Im M0V
- NIMLUIN 0736 C7539EH-A S HI Po 504 Im K0V
- Rruekhsik 0738 B866145-A N Lo Ni 700 Im G5V
- Hana's Soujourn 0739 B100101-E Lo Ni Va 202 Im M9V
- Mimku 0831 C200441-A Ni Va 800 Im M3 III
- Shashankhu 0832 D324640-6 S Ni 532 Im G2 V
- Argo 0833 A45369B-F Ni Po 223 Im M0V M3D
- Tureis 0839 D748369-6 S Lo Ni 104 Im G3II M9V
- Ushar 0840 B561422-C Ni 902 Im M4V





LIBRARY DATA

LAST UPDATED 363-1115

Altamachi/Bolivar

0138 B201420-D Ic Lo Ni Va 112 Im KO VI

Altamachi is a vacuum world. In the year 868 the Chalmatchi monks were called to cease their great journey and build a monastery on this hitherto unnamed planet. For a 100 years they flourished, producing handmade space suits, spaceships and high-tech hand-to-hand weapons of the highest quality (including the fabled swords of light, alter maces and power gloves). These items were viewed by travellers as blessed, and much of the equipment is still in use today; this being a tribute to the quality of their workmanship.

For simple economic reasons in the year 1000 the monastery all but failed. There are still a handful of monks who keep their flame burning and gladly share what little they have with passing travellers. Many of their arts have not been lost, and they will still fill out special orders for vacc-suits, swords of light, PLSS's, etc.

Amec

A citizen (generally of South American or African descent) born within the Amec Trade Protectorate. Most Amec's fall within two broad categories: (a) the Sun-born which consist of the Amec nobility, their families, auianime (courtesans) and Cuaupilli, those who have successfully undertaken the Test of Worth and (b) the Amtlan, which includes the Maceualli (Tribute or protected ones) who toil on behalf of their lord and the Pochteca or independent merchants. Amec nobility follows a feudal system with the Tlatoani, at the head of the military and directly under him the Cihuacoatl with responsibility for overseeing the civilian and judicial affairs of the Protectorate. Beneath them are the Imperial and Amec nobility, the military Tlacateccatl and the Nauhyotl bureaucrats that form the planetary governments which oversee the commands of the Tlatoani and Cihuacoatl and directly governs the Amtlan.

Amec Trade Protectorate

A expansionistic, military and merchantile league of worlds covering 20 worlds within Zeda, Bolivar and Remnants subsectors. The Protectorate is classed as a cultural region within the Imperium and must acknowledge Imperial sovereignty and military policy. Many of the South American and African descendants that had colonised the Bolivar subsector rebelled against the Imperial culture and mentality and in the process rediscovered their ancestral roots. Through fashion and art these people sought to create a separate cultural identity for themselves by identifying with their ancient history. This period of 'cultural awareness' known historically as the Mexicatl Cultural Revolution was used by Ixtlilpopoca Sanchez to bind the people together by giving them a 'national' identity. Many subsectors in Dagudashaag, including Bolivar, had been drained of resources by the various civil war factions. Ixtlilpopoca instigated a bloodless revolution on Eddum (0531) and Shumuu (0631) in 605, and used them as bases to build up the Amec War Machine.

Over the next three years, he managed to capture Kinhe (0331), Anshaar (0633) and Mimku (0831). It was only due to Duke Ghani Bolivar's masterful use of the limited military resources left to him that the Amec's failed to 'liberate' the subsector completely from the Imperium. For a further seven years the war raged. Finally in the treaty of Chicometli (615) Ixtlilpopca succeeded in getting the Ducal Office to recognise the cultural independence of three planets in Bolivar - Kinhe, Eddum and Shumuu providing the Protectorate remained officially allied to the Imperium. This gave Ixtlilpopca the power he needed to declare himself supreme Tlatoani of the people. The Treaty, however, was to be the House of Bolivar's undoing. Ghan Bolivar was stripped of his office for agreeing to a deal with the 'rebels' and the title passed to the house of Jalandri. Much to Ixtlilpopca's surprise, Duke Viisarikaa honoured the agreement and even allowed the Anshaar and Mimku governments to rejoin the Protectorate on the understanding that they sign the non-aggression treaty.

Ixtlilpopca went on to consolidate his hold over the people by publically supporting the Papai Office and by embracing Universalism as the state religion. At the same time he banned the worship of the Mexicatl gods, returning them once more to the status of cultural symbols. Despite attempts to educate the Imperial public that the old gods were now merely cultural symbols and that the state religion was Universalist Catholic, most outside the Protectorate still continue to believe that Amec's carry out human sacrifice.

Over the centuries, the Amec Trade Protectorate has continued to grow both through trade and military endeavour to encompass a major, at that time, unaligned segment of Zeda subsector. Since the Imperial rules of war prevent outright military conquest, the Protectorate became expert in using internal dissention to destabilise the existing government. At this point, the Amec-backed rebels would invite the Protectorate to come in as a peace-keeping force. Once their forces were legally on-planet the rules of war no longer apply and outright military conquest could begin in earnest. The Imperium initially tried both military intervention and trade embargoes to prevent the Protectorate's continued growth but to little avail. In addition, Shashankhu (0832), Iushush (0928) and Lemimamur (0930) have recently elected to ally themselves with the Protectorate. While most Amec worlds have elected to change the names of their planets, the Imperium has maintained the original designations on all Imperial Surveys and Navclips. Visitors should note that on planet the use of Nahuatl planetary designations are strongly recommended in order to avoid possible conflict.

Anshaar/Bolivar

(Nahuatl - Cteonanacatl)

0633 C637334-B S Lo Ni 624 Im G7 V

Anshaar is a barren wilderness of a planet. Colonised by natives from the Andes near the end of the Rule of Man, the local people have physically adapted to the extremely thin atmosphere. The only native life consists of millions of different types of mosses and fungi as well as the edible worms that form the staple diet. Most Cteonan's are experts in the preparation and use of hallucinogenics made from the worm excretions and various fungi. Rumour has it that there are also a secret sect of Cteonan's, assassins who practice the art of undetectable poisoning. For most people their only contact with the botanical arts of Anshaar is when they consume the sacred fungus Nanacatl at the Festival of the Dead.

Apolo/Bolivar

0734 B9AA887-E N Ex FI Wa 620 Im M0D

Over eighty per cent of this world's population live in massive orbital cities, floating on the upper reaches of the dense chemical soup that is Apolo's atmosphere. The remaining twenty per cent live in huge factory-ships extracting and processing valuable mineral and organic compounds from the oceans and the atmosphere. The planet is in a very close orbit of the systems primary, and is subject to great gravitational stresses, leading to a tectonically very active world.

There are a variety of native lifeforms that may be encountered on Apolo, but most notable is the Chraenta. These are large bat-like creatures that spend their entire life on the wing due to the fact there are no land-masses at all. There are occasional pockets of super-dense gas that rise from the lower reaches of the atmosphere, following seaquakes. Upon these the Chraenta's can virtually 'float on' the clouds and use them as temporary resting places. It should be noted that the Chraenta's use a form of radar to locate their food supply and as a consequence the use of certain common radio bandwidths is banned.

Argo/Bolivar

0833 A45369B-F Ni Po 223 Im M0V M3D

Considering Argo's government and law level it has a very content populace. Every adult is expected to leave the world at least once in their lifetime, to "see how the other half live". Although not all return the vast majority do. Those that return are considered to be enlightened civilians, a position that brings certain benefits such as tax breaks and preferential treatment. This system usually assures that any troublesome elements are given every chance to get out of the government's way. It is not unknown for people to emigrate to Argo from the nearby lawless worlds, who are attracted by the idea of being taken care of and not having to think on one's feet. Suggestions of a "Stockholm Syndrome" effect have brought fierce denials from Argo's government. Applications for research visits by Imperial psychology teams have been denied.

Ascension/Bolivar

0639 A1206AC-F N Na Ni Po De 810 Im M2V

Lying at the centre of the Illelish Rimworlds, Ascension has become the hub of the communication network, linking Dagudashaag with Zarushagar. It has little in the way of natural resources to offer, the mainworld is just a small ball of rock. It is poor in most valuable minerals and there are no gas giants. Yet here, in 172, the Imperial Navy decided to establish one of its largest bases in the region, to protect its spinward borders. The security of the naval station attracted many merchants looking for a safe and stable frontier base of operations, during the early years of the Imperium. The naval base was expanded at the time of the Illelish Revolt, in line with the other naval facilities in the region. The mainworld capital of St.Julianna is now a thriving commercial centre, with a wide range of goods from all over the Imperium, as well as imports from Aslan space.

Bolivar/Bolivar

0240 A78699D-F A Hi 814 Im K1V M9D

As the subsector capital Bolivar is the centre of attention and has all the features of a high-tech, high population world. What makes Bolivar unique is the near total solomani-originating population in what is traditionally a vilani-dominated region. Further to this is the fact that the people are in the majority of one cultural group, from the heavily Iberian influenced South American continent of Terra. Parallels have often been drawn between Bolivar and Silk (2440 C354377-A) with this in mind. The world has a very dynamic socio-political structure, subject to many upheavals in its history especially during the Long Night - massive immigration, popular discord, commercial exploitation, terrorism, military intervention, government incompetence and assassinations. Thankfully much of that is passed thanks to the Bolivar family which has tried to secure equality, justice and bonding of the disparate social groups on the world. For the most part Bolivar is a stable, thriving and exciting world although there are still many gaps between those with and those without.

Bolivar has a very attractive and comfortable biosphere, almost ideal for human habitation. Much of the natural beauty of the world is unspoilt for the majority of the population are concentrated in large metropolitan and urban areas. Much of 'the countryside' have restricted access being owned by private companies and individuals as well as the planetary government. Ocean refuelling by star- and spaceships is strictly forbidden.

Bolivar, Ramone Simon (the Second)

(b. -1575 d. -1493)

Born during the depth of the Long Night, Ramone Bolivar II rose to become one of the celebrated figures of the Bolivaran dynasty. Although a member of one of the wealthier families on Bolivar Ramone quickly became aware of the inequality and the large divisions in the planet's society. As the eldest son of the family he inherited the title of Duke and position as a non-executive director of Camrii-La Paz Pan American Industrial Consortium upon his father's death. This boardroom position was granted to the Bolivar family following the efforts of his ancestor Jesus Bolivar in helping colonise the world and subsector of Bolivar. Uneasy in taking the post (although largely honorary) when he was conscious of the deprivation and fragmentation of the population at large, he tried to use the boardroom to influence CLIP's business and economic policies to alleviate some of the worst affected areas.

After several years of unsuccessful negotiation Ramone took to open criticism of CLIP and eventually resigned the board position amid great acrimony and publicity (and one or two assassination attempts if it is believed). His worst fears for the world were realised as there began a steepening spiral of social and financial chaos with more short-lived coups, corporate attempts at controlling the state and half-hearted democratically-elected governments. He continued to campaign for social justice and consensus politics but was ignored for a decade. He was even put under house arrest twice during the military's continued quest for power.

Ramone managed however to build up a band of core followers who advocated his view, and it was these that helped to secure a chance for a vision of Bolivar's future. A Unity government was established in -1527 with Ramone as its executive head following elections.

The government brought stability to Bolivar and it slowly began to halt the slide and make progress. Some of the social issues were addressed but on the whole the improvements were only slight. Frustrated at the lack of major change, still hampered by the business and military community, Ramone Bolivar II resigned as President in -1512. In his own eyes Ramone had failed and declined in spirit as a consequence. Many people commented that shortly after giving up the presidency Ramone Bolivar looked a 'sad, old man'. His lasting fame is for the stability he provided to Bolivar, halting its drop into oblivion.

(extracts from 'The Bolivarian Legacy' by Edouard Jimenez (3rd edition),
United Free Press, Bolivar, 1076)

Bolivar Terraforming Initiative

The Bolivar Terraforming Initiative is an organisation sponsored by the IISS and the Dagudashaag Development Office (with additional funding from the Imperial Bureau of Colonisation and private concerns) to develop the ecospheres of marginally habitable worlds within the subsector. The aim is to engineer more equitable environments suitable for widespread colonisation, relieving some of the population pressure on the overcrowded worlds of the sector's core.

Begun in 968, the BTI took on the terraforming of Rruexhsik (Bolivar 0738) which has recently been cleared for colonisation. The altered geophysical and biological environments have been monitored for the past thirty years and shown to be very stable. This has secured the funding for the meteorological engineering of Lamdas (0638) and the research into the possible improvements on Khimkaa (0735) and mindahm (0733).

Calamatchi, Brotherhood of

Calamatchi brotherhood of technical priests who until the year 868 roamed the empire on a quest to find Altamachi (haven of the Pure), a fabled planet inhospitable to all but the just and righteous. During their long wanderings the Calamatchi gained a legendary reputation as peace makers and technical wizards. Since the fall of Altamachi, lone priests can be found wandering throughout the empire and beyond.

CalMac Interface Lines

[Caladonian MacBraynes (Dagudashaag) Interface Plc]

Caladonian MacBraynes were a pre-space transport company based in Scotland, Terra that moved out into space during the Rule of Man. Several splinter companies were formed throughout the Imperium of which CalMac is only one. Initially involved in trading with Gushemege and the Ziadd Confederation. With the formation of the Amec Trade Protectorate, the company elected to establish an interface line between the Protectorate and Zeda/Ushra subsectors where their Imperial credentials help smooth the transfer of Amec goods into Imperial space and vice versa.

Camrii-La Paz Pan-American Industrial Consortium

[CLIP]

Industrial and mining concern originating on Terra in -2,470 (AD 2048 in the solomani dating system) popularly known as CLIP. Formed from the merger between two South American manufacturing, processing and mineral extraction companies, CLIP were quick to expand their operations into space when bases became established throughout the Terran system (Sol/Solomani Rim 1827 A867A69-F).

The arrival of jump-technology saw a major boom for CLiP as they had a large share of the available rare-earths within their mining claim areas. The outbreak of hostilities with the vilani saw CLiP gear-up to the manufacture of essential military supplies for the Terran Confederation, which included the production of vessels for the Terran Navy. As the Terrans drove the Vilani back coreward, so the following military infrastructure moved in to aid the advance. Prominent among them was CLiP. For their part in the Terran victory, CLiP were given generous exploration, ownership and mineral rights.

By -2,200 most of CLiP's business was now centred in and around the old vilani trading heartlands of Vland, Lishun, Dagudashaag and Core. The senior executives of the company decided that it was time to move and took the brave step to move the headquarters of the business from Terra to Bolivar (Bolivar/Dagudashaag 0240). Fifty years later the company were well established on the world and attracting further business and people, although mainly from the Solomani Sphere and later Zarushagar and Gushemege were it does the majority of business these days.

Since then the company has risen and fallen in step with the general fortunes of the Imperium (Second and Third) but has recently made further gains due to acquisitions of a number of small companies deeper in Dagudashaag. These buy-outs have quite often been in direct competition with the Amec Trade Protectorate with which it has an ongoing commercial feud over trading practices and freedoms.

Chraenta

(Vasco's Glider)

A bat-like pseudo-marsupial lifeform native to Apolo (Bolivar 0734 B9AA887-E). These creatures are exclusively flyers, spending their entire lives riding on the dense, complex atmosphere that bathes Apolo. They are born, grow, feed, develop, mate, give birth and die on the wing. Chraenta's have bilateral symmetry, measure two metres from nose to fan-shaped tail, and have wingspans approaching four metres. They have short, dense, silky fur covering their torso and dorsal surfaces. They possess two pairs of eyes, which are adapted for far - and infrared wavelengths. The Chraenta's are filter feeders, continually trawling the skies of Apolo for small arthropods that swarm in the mid-atmosphere. They located the swarms by means of radio-wave echolocation, identical in principle to radar.

They give birth to a single, live, underdeveloped pup (they are sexually mature at around five years) which has a treacherous first few minutes of its life. It has to move from the birth canal opening down to the forward facing pouch. Despite assistance from the parent, up to a quarter of young do not find security in the pouch and plummet to their deaths. The young feed on the Chraenta equivalent of milk then regurgitated food from the parent, before leaving the pouch at about three standard months. At this point the Chraenta's are miniature adults and set about their life on the wing (although it is not unusual for young pups to hitch a ride on a parent).

Predation is virtually non-existent and the major causes of death are disease, and injuries sustained from courtship challenges and displays, as well as man-made devices. The average lifespan approaches forty years. Although a protected species, many Chraenta's have made their way into private collections, but even under the best of conditions they do not survive for more than ten to fifteen years.

Cihuacoatl

Iquehuac, Huahuantli (b. 1109 -)

The second most powerful position in the Protectorate is currently held by Huahuantli Iquehuac, an ordained Arch-Bishop of the Faith. The title Cihuacoatl translates as 'Women Snake' though it has always been a male office held by members of the House of Tetrahuitl since the Mexicatl Cultural Revolution. One of the posts prime responsibilities is to oversee diplomatic relations with the Imperium, to forge alliances with neighbouring worlds and to arrange strategic marriages with important regional powers.

The current Cihuacoatl is a an elderly man unbowed by age, with an immense curiosity which has given him an almost encyclopedic knowledge on a wide variety of subjects. He speaks seven languages and can read and write a further five. He is a strong supporter of the current Tlatoani and is believed to be his closest friend.

Cobija/Bolivar

0440 A775456-D Ni 503 Im K3VI

Cobija is a growing agricultural centre, set up by Bolivar to provide its large population with the majority of its staple food supplies. The world has become a focus of environmentalists' protest as the biosphere has become more polluted. This is due to the massive overuse of cheap chemical growth enhancers and pesticides. Currently the atmosphere has been given a tainted classification reflecting the presence of significant areas of airborne toxic residues.

Danse/Bolivar

0232 D9B4743-9 S Ex Fl 802 Im K3 V

Danse is peculiar in that it is an exile camp for political dissidents. The forefathers of the present 80 million population were exiles from all over the empire (none are from Dagudashaag sector, this is standard imperial anti-dissident practice), sent to Danse during the 700's anti-imperialist dissident clean up.

This large, inhospitable world has very little in its favour except the population itself who are, friendly, warm and honest to a fault. Since the planet was colonised 300 years ago the populace has elevated itself from tech level 0 to TL9. In its 300 years as an exile camp there has never been an escape attempt of any sort; violence is extremely rare, hence the low law level (there are very few written laws on Danse as there is little need for them). The populace has never made any demands upon the empire for assistance, and has achieved its tech level through hard work and dedication to a common belief structure. Although this planet is monitored as though it were an amber zone, the IISS have been prevented by the empire, for political reasons, from giving Danse this classification. Despite its corrosive atmosphere, its continual storms, lack of trade and low temperatures, Danse is a great planet to visit, "all the planet's warmth and sunlight is contained within the home". Meeting Dancers is like a breath of fresh air to the weary traveller.

EDDUM/Bolivar

(Nahuatl - Epantla)

0531 D797978-6 Hi In 102 Im M4 V M0 D

Official capital of the Amec Trade Protectorate, Eddum is home to the courts of the Tlatoani and Cihuacoatl. Eddum is classed as a protected conservation area and, since the attempted assassination of Tlatoani Churnanoatl in 788, Imperial visitors are severely restricted as to where they may go on the planet.

Eddum was originally classified as A797A78-E and was populated with hundreds of medium sized cities surrounded by suburbs and chanty towns. Then in 895, an unpredicted chain of events resulted in a major catastrophe. A medium-sized meteor struck Exaar (Eddum's only moon). The impact caused a slight fluctuation in Exaar's orbit which in turn caused Eddum to suffer a minor tilt in its planetary axis. Although the planet moved less than 1o it was sufficient to cause eddum's unstable chain of volcanoes to burst into life. The atmosphere was afflicted with the stench of sulphur, entire cities were buried under the lava. Then, just as everything seemed to be coming under control the entire planet was subject to severe earthquakes. Almost overnight 6 billion people died in one of the worst catastrophes ever to befall Dagudashaag. The Tlatoani was persuaded to move to Syrna (0329) while the Protectorate mobilised its forces into a massive rescue operation.

In 898 the Tlatoani elected to return the Turquoise Throne to Eddum. He rebuilt all the cities along Syrnan lines; garden cities surrounded by floating gardens and estates. He decreed that the people would return to a more idyllic life style and banned the majority of shipping from landing on the planet, deplacing the major starports to Exaar.

Today, if you can manage to ignore the thick sulphuric taint in the atmosphere, you would never know the disaster that had befallen the planet. each city is designed as a mortal paradise. All high technology (outside the work environment) is banned by law. The poor are deported off-planet so as to not be a blemish on the classic beauty of the architecture.

See Port of Call: Eddum

Ekha/Bolivar

0137 C568310-7 Lo Ni A904 Im K2 V

Ekha, a tropical paradise world of magnificent beauty. Ekha is wholly owned by Imperiallines LIC, it is used by its executives and the executives of Imperiallines subsidiaries as a sabbatical retreat. It gets its name from a Sylean perversion of the Anglic echo. This geologically stable world is riddled with massive subterranean caverns, some of which measure kilometres across, many of which are unexplored. When settled after the dark night by the forerunner to Imperiallines a planetary charter was drawn to preserve Ekha's great beauty. All development and building would take place below ground in the great caverns. The planet should never support a population of greater than 10,000 humans, and there should never be more than 10,000 sabbaticalists visiting the planet. To aid this charter Imperiallines lobbied for an amber classification which was incorrectly granted, and so for 600 years the planet has been in a legal battle with the IISS, a legal wrangle which is destined to continue forever.

Feathered Serpent Pharmaceuticals

Outside of the Megacorporations, FSP is the largest pharmaceutical company in Dagudashaag. What is even more surprising is that FSP only started in 698 and has grown from a small family run business into the largest private company within the Amec Trade Protectorate.

Initially known as Calpulli Quetzalcoatl Pharmaceuticals, (House of Quetzalcoatl) the board of directors elected to change the name in 755 to help dispel Imperial rumours that the company had been named after the ancient Mexicatl god and that the board (consisting exclusively of Amec Sun-born nobles) still carried out human sacrifices in his name.

FSP is best known for its biogeneered plants such as the Iquehuac sun coral (used under licence in the manufacture of low tech solar panels) and the Nezahualcoyotl plant which can naturally be bred to synthesise any of several natural drugs from iodine to opium.

Feym'n/Bolivar

0236 D435875-6 S 224 Im M3 V M0 VI

Feym'n is the kind of place that foreigners on other planets come from, that is more people emigrate than immigrate. A token Government exists but the lack of judicial, legal and law enforcement systems led the world to degenerate into the lawless blackspot of Bolivar. The IISS has stepped in and enforced a basic law system which prevents the possibility of mass murder though not much else. If you visit expected to get ripped-off. This has become a local custom and is often a precursor to unprovoked personal physical violence.

Most ships entering the system only stop of to refuel before moving on. The smart ship's captain doesn't think about disembarking herself, her crew or her passengers. There are some brave souls who can make a big bucketful of credits trading in the entertainment media, especially simstim and other VR variations which are very popular here. The added bonus is the number of emigrants willing to pay over the odds to squat in a ship's hold for two or three weeks just to get off this 'hellhole'. The average IISS operative regards Feym'n as a "punishment posting".

Gaad/Bolivar

0235 C778543-8 Ag Ni 103 Im MO V M1 D

Although Gaad is classed as an agricultural world nothing is grown on the planet surface. Instead it has a carbon and ice ring system on which the planet's 50 subsidised spaceships harvest and tend a naturally occurring plant life form. Lattuce is a high volume industry on Gaad. The farmers of Lattuce are more akin to belters, almost the entire planets population of 100,000 is dedicated to the harvesting, tending, export, and sale of lattuce. The origins of lattuce is unknown. It is believed to be a genetic manipulation of naturally occurring plant life native to Gaad. Although recent work by xeno-geneticists have found similarities to terran plant life which has lead to theories that it may be a hybrid instigated during the rule of man to provide food sources for future colonies in this area.

Gya/Bolivar

0636 C546110-B Lo Ni 412 Im G0V

Covered in warm humid tropical jungles, Gya has a wide variety of flora but very limited fauna - mostly insects. It is a hazardous planet due to the presence of a series of bacteria which are either harmful or lethal to creatures with 'standard' lungs. The bacteria affect the alveoli system of oxygen exchange causing gradual suffocation over a period of several days. The native insectoid life (and other offworld fauna using diffusion or similar breathing systems) are relatively unaffected by the bacteria although some do act as hosts. The bacteria life cycle is based around the planet's seas and includes an airborne phase which spreads them inland. High mountainous regions are rarely affected and thus are the only regions where filter masks are not a necessity.

The population of 47 is mostly scientific staff researching the bacteria types in an effort to counter their effects. The staff includes several S'mrii members who seem unusually interested in this planet.

Hana's Sojourn/Bolivar

739 B100101-E Lo Ni Va 202 Im M9V

The name actually belongs to the hotel on this orbiting spacestation of this non-descript iceball. Hana's possesses the very latest in holographic entertainments for the weary space traveller forced to stop over en route between Bolivar and Uaam. Hana's also provides some of the finest cuisine around with dishes from over twenty worlds and different cultures on the daily menu. The quality of the aslan food has won over many aslan who make Hana's a 'must stop' when they are travelling in the region. This recent popularity has had a dramatic effect on local prices, fuels and life-support replenishments cost double what they would anywhere else.

Jalandri, Duchess Alissa

(b. 1090 -)

Current Duchess of Bolivar, Duchess Alissa has a reputation as a weak-willed socialite who is only interested in finding a 'suitable' husband and in attending the parties held at court. Duchess Alissa has spent the last three years away from her own office, two years at Capital and the last year attending the Sector Duchess who is a close friend and confidant. In her absence her brother Alyx has acted as proxy 'Voice of the Law' dealing with the local affairs of the subsector.

Karanga

Local dialect found throughout the Protectorate, the language is a hybrid of several African dialects including Swahili. Primarily used as a second language by the Ba' (people) of African descent.

Khaguu/Bolivar

0535 C110530-9 S Ni 712 Im K4V

Khaguu is poor in critical natural resources and is totally unable to support its three-quarters of a million inhabitants without substantial imports. Over the centuries the elitist ruling council has encouraged free trade with minimal trade laws and low port taxes. The populace has gradually acquired a very friendly attitude to the traders (and visitors) of all races.

Khimkaa/Bolivar

0735 B5958A6-7 102 Im MOV

Despite orbiting a cool, red star, the dense CO2 atmosphere of Khimkaa ensures daytime temperatures here regularly reach 45oC, thus the society has become mainly nocturnal. They are also evenly spread across the planet, with no more than 100,000 in the largest five cities. An advanced weather-control system ensures that there is plenty of daylight for the solar power generation and storage systems and that there is two hours of precipitation before sunset. This rainfall is timed to allow the air and ground to cool before the Khimkaans leave their air-conditioned homes.

Kinhe/Bolivar

(Nahuatl - Chanticotli)

0331 E79A687-6 Ni Wa 404 Im K2 V

Kinhe was settled by the Akan people of Ghana, Terra during the Rule of Man. The Bu'Akan live primarily on the tropical atolls that ring the planetary equator and make a living through traditional crafts and fishing the world's ocean. In 377 a colony of Scanian's including 2,000 Aquans were invited to help colonise the planetary oceans and to work with the Bu'Akan to develop ecologically safe mineral extraction systems to dredge the ocean beds. In 604 - 5, Kinhe was severely ravished by opposing Naval forces during the initial chaos of the Civil War. The population retaliated by electing to opt out of the Imperium and join the fledgling Trade Protectorate being formed by Ixtlilpopoca Sanchez.

Within twenty years of joining the Protectorate, the then fledgling Amec company, House of Aymara, had managed to 'buy' out the entire extraction industry and had elected its own (off-world) government to run the planet. One of the government's first acts was to make the planet's religion officially Universalist and to ban the worship of any other faith including the Scanian philosophy and the widespread Bu'Akan religion of Nkisi. When the local's decided to ignore the law, the Amec government declared an Inquisition backed by strict penalties for contravening the Worship Laws.

Within a year the native people had rebelled. Amec Marines arrived in force to ensure 'peace'. For the Bu'Akan and Scanian's this meant almost 1.5 million people dead and a 'military' dictatorship run by House of Aymara. Since then this governmental structure has degraded into a highly inefficient bureaucracy.

Kwan-Bolivar of Bolivar, Marquis Pol

A direct descendent of Simón Bolivar the liberator, Marquis Kwan-Bolivar's ancestor, Duke Ramon Jesús Bolivar, led the initial solomani colonisation of the subsector. The family lost the Ducal office to the House of Jalandri as a result of agreeing to the formation of the Amec Trade Protectorate in 615. Despite this, House Bolivar still holds the title to Bolivar itself and has extensive estates throughout Bolivar subsector, much to the annoyance of the Subsector Dutchess who has her ducal offices based on a planet which is actually the fiefdom of another. The Marquis, (his full title is Marquis Kwan-Bolivar of Bolivar/Bolivar) often refers to himself as the 'Bolivar Cubed'. He is a jovial man of 67 years renowned for his piety (he is a lay Bishop in the Universalist Church), love of good wine and his tendency towards elaborate practice jokes.

Ironically though, a trader brought in Tanzak's Plague 2 years ago, causing such a rapid loss of life that the council was forced to impose a tight system of medical checks on all newcomers to Khaguu. Initial tests are performed as part of the port inspection. Visitors wishing to leave the port area are required to undergo a very extensive examination using high-tech bought-in medical kit. This often picks up current and potential ailments including those of which the patient is unaware. Given that these tests are free some visitors deliberately use this as a periodic health check-up.

The tiny planet's low gravity makes many of its inhabitants very light-limbed and, despite the use of mechanical and gravitic devices to produce higher gravity in certain areas, most inhabitants cannot travel off world without a month or so of strenuous physical training.

Khaguu is unusual in retaining a trace atmosphere despite its small size. This is produced by the release of tiny amounts of oxygen, nitrogen and other (contaminating) gases from porous chemically-laden rocks affected by minor but constant volcanic activity.

Khika/Bolivar

0635 B500021-D N Lo Ni Va 602 Im M9IV M1D

Khika starport was originally a small naval base, consisting of a large ground port ('Khika Down') and small orbital unit ('Khika High'). A small proportion of Khika Down was set aside for civilian use since it seemed uneconomic to build a second port for the limited traffic which passed through the system. However, as the base increased in size and traffic in accordance with the development of the surrounding systems, Khika High took on the majority of the military functions. In times of trouble the ground port's mixed civilian/military operations caused security problems and some 73 years ago Khika Down was abandoned to purely civilian use with the orbital station expanded accordingly. The uninspiring rock ball of Khika had attracted few permanent inhabitants and the naval withdrawal left just a few port personnel.

The civilian port has remained mostly robot-operated while the number of overseers has gradually decreased until now only the six members of the Sanhelen family remain. Having been at Khika through three generations, the Sanhelen adults and children all work at the port. Close links are maintained with the naval base which helps Khika Down to maintain most of the automated leisure facilities originally provided for the ground naval base. This high-tech 'playground' makes it a popular place for navy crew on R&R as well as civilian visitors. The family is counted as a participatory democracy as all the adult members vote on the major port decisions.

The small size of the community means there is little local news and the Sanhelens have become increasingly reliant on imported information, to the degree that it is accepted custom for regular visitors to spend the evenings relating their recent interesting/exciting exploits. Newcomers who are good storytellers will be well received, while antisocial types can expect poor quality port service.

Lamdas/Bolivar

0638 B541330-9 S Lo Ni Po 604 Im K7V M7D

The IISS maintain its subsector headquarters on this world. Its low oxygen levels and little free-standing water have prevented any serious colonisation effort. Scout Service engineers are undertaking a feasibility study (as part of the Bolivar Terraforming Initiative) on simultaneously raising oxygen and water levels. A recent survey has shown substantial quantities of water trapped below the polar and sub-polar surface, in the form of complex water-methane ice silicates. The terraforming feasibility is an ongoing project designed to provide much needed, favourable environments to aid colonisation in the region. The IISS has recently finished a hundred year program on Rruekhsik to raise the atmosphere pressure and available water, and aims to use the same successful methods to develop Lamdas.

Lattuce

Agricultural foodstuff, believed native to Gaad, grown in orbit used as flavour enhancer and source of carbohydrate exported to all parts of the empire. Lattuce is a root plant which emit from a central seed-pod much like a snow flake from under a microscope. The roots are used to stabilise the plant within orbit and to search out packets of ice/carbon, and minerals. At the tip of every root stem a seed pod grows. When it is fully matured and orientated towards deep space the pod is ejected to seed in a new area of the ring. Lattuce gets its name from its beautiful radial symmetry, when the plants were first encountered the radial roots of many lattuce plants lay across one another thickly in lattice formation. Only when samples were taken was it realised that this great three-dimensional architecture was actually constructed of individual cells.

The largest lattuce ever found is thought to be over 900 years old and measured 3 kilometres in diameter. It has been served with a preservation order, and as a footnote to the success of lattuce large tracts of its internal architecture are now hired out for the performance of church ceremonies, concerts, events and exhibitions. In 1110 the first marriage ceremony was conducted by the Church of Christ the Merchant; within the beams of "Bigoldie" as it has been affectionally named.

Mimku/Bolivar

(Nahuatl - Xiuhcoatl)

0831 C200441-A Ni Va 800 Im M3 III

For a "desolate ball of dust" Mimku does very well for itself in what might seem an unusual way - the leisure industry. Zero-gee survivalists travel from far and wide to sample the "Mimku Experience", which usually involves spending several weeks living in pressurised cabins and vacc suits.

The Amec Qualimala has picked up on this activity and regularly sends scouts for zero-gee environment training. This has caused some friction with the happy, elitist holidaymakers who resent the Scouts jumping on their bandwagon. Although there have been no injuries so far there have been many 'accidents' involving Government equipment. The very low law level has hampered the Scouts attempts at retaliation through official channels.

Mindahm/Bolivar

0733 C4367BA-9 C0 704 Im M1V M6D

This planet is a gas giant moon that underwent extensive, although incomplete, terraforming during the Rule of Man. Lack of funds to finish the project has left Mindahm a quasi-habitable ecosphere that is home to a number of small mining concerns and a small, population of Chirpers. The remarkably pure ores found on the planet are processed and utilised locally before export. Of most note are finely crafted hand-weapons, antique and modern, which are much sought after. Mindahm is for the most part very cold despite the early terraforming efforts, much of the oceans and seas are capped by layers of ice up to sixty metres thick. Further terraforming operations are being considered.

Nahuatl

Ancient spoken language of the Aztecs (Culhua Mexicatl), Nahuatl was 'rediscovered' during the Mexicatl Cultural Revolution and became the official Protectorate language in 743. The current version only approximates the original language and many words have been adopted - primarily from Galaach - and adapted to fit Nahuatl pronunciation. Galanglic characters are used in its written format.

NIMLUIN/Bolivar

0736 C7539EH-A S Hi Po 504 Im K0V

This planet holds an agnostic society that dislikes having to make contact with other cultures. Open statements of religious beliefs are banned, and missionaries from any faith are liable to execution without trial if suspected of 'preaching'. Only the most trusted personnel are allowed to work at Nimluin's single (ground) starport. These are few in number and are so frequently overworked that they simply close the starport down to all traffic until they have caught up with the backlog. In these circumstances a few ships running low on fuel have attempted to draw fuel from the oceans, and have fallen foul of the local naval patrol ships which will shoot to destroy. This response is seen as justified for the crime that the Nimluin authorities see as "theft of eco-resources". The scout base provides facilities for IISS ships because of the above, but it is on the whole a token presence only.

Rruekhsik/Bolivar

0738 B866145-A N Lo Ni 700 Im G5V

Thanks to the Bolivar Terraforming Initiative and the IISS, Rruekhsik has become a new idyllic colony world. Now that the stability of the altered biosphere has been proven, the IISS and the Bolivar Colonisation Board are actively promoting the influx of people from the core regions of Dagudashaag and the Imperium.

At present the only permanent population established on the world are an extended family of about sixty vargr, living on the north polar land-mass. The group are Imperial vargr who decided to flee the corsair-plagued regions of the coreward Corridor-Vland border on their family-owned free merchant. They have been doing good business with the IISS and (token) naval personnel, trading in luxury items unavailable to the enlisted rank-and-file. The naval base is due to be closed down in the next couple of years.

Shanim/Bolivar

0540 B000661-C N Na Ni As 803 Im G1V

Once an important mineral exporter in the early years of the Third Imperium, operations (supported by DagMet) in the Shanim Belt declined in the early 500's when the major deposits were worked out. Small amounts of valuable minerals and ores are still produced, although Shanim has lost its industrial pre-eminence.

The re-establishment of Shanim's importance came with the decision of the Imperial Navy to build an additional naval support facility in the wake of the outbreak of the Illelish Revolt. Housed in a sizeable, half-hollowed asteroid, called 'Yosuf's Heart', the naval base still provides the navy with a large maintenance facility. It specialises in hull and intermediate systems repairs, overhauls and constructions. In an attempt to reduce its costs the IN has recently sold the repair side to the private sector with which comes the secured navy contract for the next five years. Lemur-Bolivar Stellar Constructs hope to expand the site to increase its commercial business and currently there are a large number of employment opportunities.

Shashankhu/Bolivar

(Nahuatl - Tetzatotec)

0832 D324640-6 S Ni 532 Im G2 V

Shashankhu was originally established as a prison planet during the Vilani Pacification Campaigns and had a reputation for extreme brutality. In 322 the prison was closed down and the planet was handed over to the surviving inhabitants to run. The local people managed to survive by turning the work camps and mines into an extremely profitable business. In 905 the Council of Decision elected to join the Amec Trade Protectorate. Today Shasher's have a reputation for working hard and playing hard. It is the only world within the boundaries of the Protectorate that has not criminalised drunkenness or murder. The only crime on the statute books is theft which carries the sentence of death by being flayed alive.

Shumuu/Bolivar

(Nahuatl - Huahuantli)

0631 C300100-A S Lo Ni Va 202 Im M5 V

Shumuu was once a major mining colony which had almost been mined out and headquarters of House of Yeipanitl until the Eddum disaster. When the disaster struck, the people of Shumuu elected to abandon the moon colony and use its entire resources to support the rescue effort. Afterwards House of Yeipanitl was rewarded with great honours for its unselfish actions and was granted estates on Asimidiske. Today Shumuu is little more than an automated starport while House of Yeipanitl maintain a robotic mining facility involved in stripmining the planetary surface.

Tanzak's Plague

A rare but virulent proto-virus transferred in body fluids (sweat, saliva, etc.) which causes a gradual increase in the body's sensitivity to allergens. This leads to a 'dormant' period of between a week and a month, depending heavily upon the host's immune systems. At the end of this period the host suddenly becomes hyper-sensitive to one or more commonly occurring

allergens resulting in massive anaphylactic shock and death unless immediate medical treatment is given. Named after Dr. Shamir Tanzak who discovered it, this particular proto-virus is easily detected by testing and can then be treated by a two day course of antiprionics. However, a host with a long-dormancy period and no evidence of infection can contaminate many others and cause short but lethal outbreaks, as happened recently on Khaguu.

Tarija/Bolivar

0539 B20056B-C Ni Va 810 Im M1 III

Tarija is a declining mining outpost on the outer edge of the Tarija system. Established shortly before the initial colonisation of Bolivar by Camrii-La Paz Pan-American Industrial Consortium (CLiP) in -2,125. Most of the company's administration for this region switched to Bolivar. Tarija was still a reasonably important source of raw materials, and hence profit, for CLiP. During the Long Night the base was effectively shut down, accelerated with a large reduction in the workable ores mined at this time. With the re-expansion in trade and travel that heralded the beginning of the Third Imperium the base was reopened. New mining techniques and the need for a base closer to the heart of the new Imperium and Terra saw Tarija's fortunes wax once again. In a continuation of the economic cycle, financial pressures have led to a contraction of Tarija's worth. The last of the ores worth extracting were mined-out a hundred years ago and the need for a transit depot has been diminished. The population has dropped by half since 1010. The recent rumours that CLiP are to pull out from Tarija altogether will further undermine the shaky economy. This would lead to the other businesses on Tarija to pull out and start a further exodus of the population.

Teochimecatl

Slang variant - Teoch'atl

Nahuatl term meaning 'barbarian'. Frequently used to describe all humans born outside the Protectorate.

Tlatoani, the

Motecuhzoma, Tlacahuepan (b. 998 -)

The Amec Trade Protectorate is officially classed as an Oligarchic government ruled over by the Tlatoani. The Turquoise Throne is currently held by Tlacahuepan Motecuhzoma, the third born of the previous Tlatoani, Baron of Eddum and a direct descendant of Sanchez.

Most Tlatoani are elected by the Council of the Sun-Born (through the six elected members of the Tlatocan) on the death of the previous ruler because they have shown outstanding military or commercial talent and have added to the Protectorate in some way. Generally the position is offered to the oldest son of the previous Tlatoani although they must still have proved their competency and worth. The last four to sit the Turquoise Throne had successfully expanded the boundaries of the Protectorate by conquest. Tlacahuepan Motecuhzoma was selected in 1019 over his older brother (Baron Ixtlilcatl of Eddum) because of his brilliant military coup in destroying the Ba'Xipe Totec Corsairs.

Tlakahuepan is now a frail old man who has done much during his reign to build up good relations with the Imperium. He has proved a good regional administrator and has formed strong bonds with the Church. He was a strong supporter of the late Duke Viisarikaa although he does not always agree with his democratic reforms.

Tlakahuepan is expected to be replaced by his first born son, the Tlacateccatl-Nauhyotl Cozcatēcātl Khidhir who was responsible for the acquisition of Corolco. His second son, Tlaxca served as Arch-Pope Aliskhandar II until his assassination in 1105.

Tureis/Bolivar

0839 D748369-6 S Lo Ni 104 Im G3II M9V

Tureis is an enormous marine research base run by the IISS and as such boasts an extremely wide and varied range of marine flora and fauna. Rumours persist that the IISS are preparing the world to become an aquatic zoo, taking in examples of marine lifeforms from all over the sector. Amongst the species believed to be one of the more recent treasured imports are Akivan Zhoam. The Scout administration flatly deny the presence of any introduced species on Tureis, although they haven't denied the possibility at a later date.

It should be noted that ocean refuelling is strictly prohibited. Orbital beacons state this in the strongest terms and redirect starships to the system's four gas giants.

Uushar/Bolivar

0840 B561422-C Ni 902 Im M4V

The scene of some of the most flagrant contraband and arms dealing in recent years, Uushar is a first-class example of the "anything for the right price" principle. Uushar, like all worlds offering these services, attracts more than its fair share of low-lives. Representatives from more than one organisation under investigation for major criminal activities can be found here. The world fills the role of the "stellar motel" (the pay by the hour variety) and consequently boasts (?) one of the largest and most advanced STD clinics in the subsector.

Weapons; Calamatchi Brotherhood

Swords of light, power gloves and alter maces; All hand-to-hand weapons produced by the fabled Calamatchi priesthood. Swords of light are a simple fusion flame contained within a gravitic tube, and used in the same way as a standard one metre bladed sword. Power glove is a metal gauntlet which will both enhance the strength of the wears hand fourfold and projects the actions of the wearers hand to pre-set distances, so that people may be strangled without touching them, locked rooms probed by touch, etc. Alter maces are simple metal cudgels, the shafts of which are made to be rigid for defensive fighting, or at the flick of a switch become flexible, to impart greater force through the head of the mace into the target.

Referee:

Mindahm/Bolivar

Deep under the ice in the southern temperate zone lies a lost vital geological research base. Buried for nearly five thousand years, following an initial avalanche. The base was constructed out of snow and ice, and remains intact although none of the scientists survived.