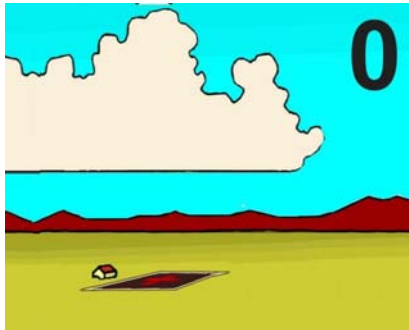




Terrain-9

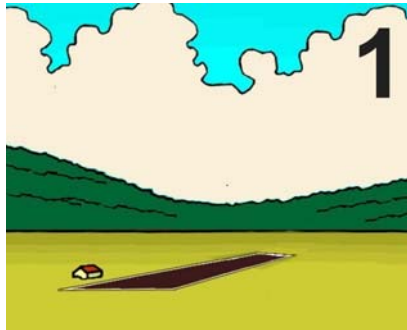
Terrain Group 9 is the set of terrain types associated with Flyer landing grounds.

Terrain-9



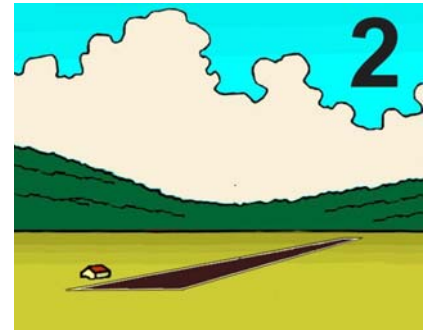
Airpad 96

A landing ground for vertical landing and takeoff Flyers.



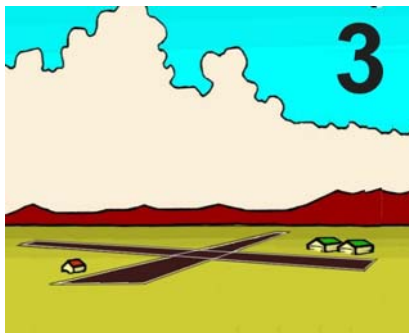
Airstrip Vlite 91

A rudimentary landing ground for Flyers suitable for Vlite Winged craft.



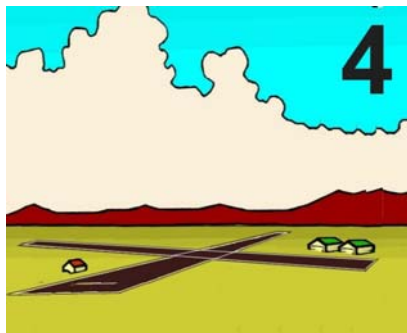
Airstrip Lite 92

A landing ground for Flyers suitable for Lite and Vlite Winged craft.



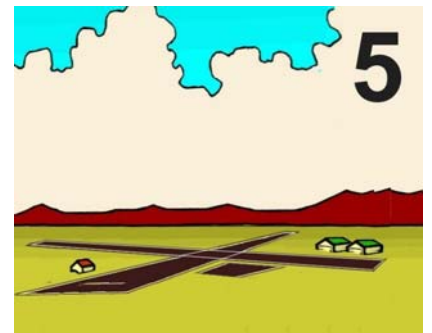
Airport 93

A landing ground for Flyers suitable for Medium and smaller Winged Flyers. The runways (usually more than one) are about 3,000 meters long.



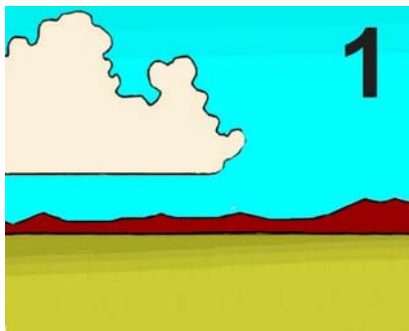
Airport Heavy 94

A landing ground for Flyers suitable for Heavy and smaller Winged Flyers.



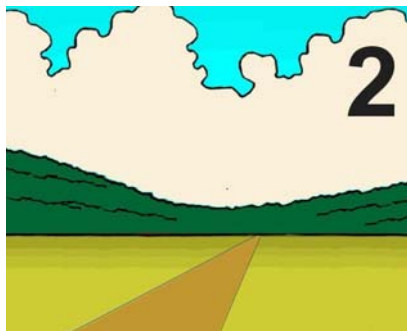
Airport Vheavy 95

A landing ground suitable for all winged Flyers.



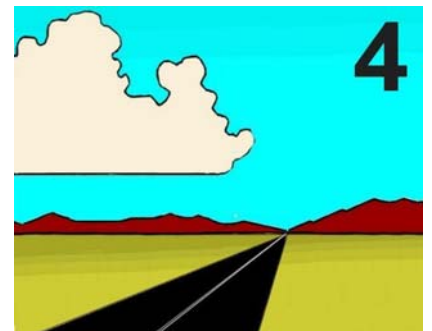
Open Field 97

A portion of other terrain suitable for landing by Vlite Winged craft.



Road 98

A portion of road suitable for landing by Lite and Vlite Winged craft.



Highway 99

A portion of highway suitable for landing by Medium and smaller Winged craft.