



## Terrain-4

Terrain Group 4 is the basic set of terrain types encountered on inhospitable world surfaces.

## Terrain-4



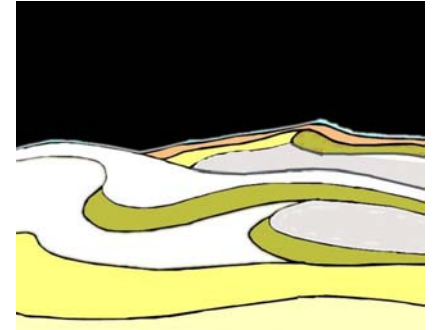
**Baked Lands 41**

The way ahead is Baked Lands: territory under constant or intense stellar heating. The territory is reasonably flat and easily travelled. There are only occasional and minor barriers.



**Twilight Zone 42**

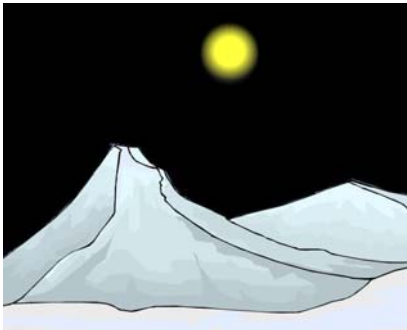
The way ahead is Twilight Zone: lands midway between the Baked Lands and the Frozen Lands of worlds locked to their star.



**Frozen Lands 43**

The way ahead is Frozen Lands: lands in constant shadow on planets locked to their star.

Or  
Lands on worlds far enough from their primary star that they are forever frozen.



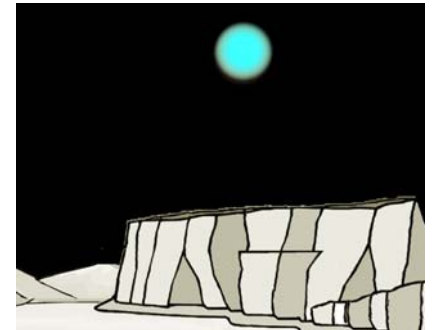
**Ice Fields 44**

The way ahead is Icefield terrain: vast expanses of frozen water, gases, or other liquids.



**Exotic 46**

The way ahead is Exotic terrain: abnormal, unusual, or inexplicable territory which provides unexpected features.



**Precipice 45**

The way ahead is a Precipice: an extreme change in land elevation which is an absolute barrier to surface vehicles.