

A Supplement for use with
STAR TREK™
THE ROLE PLAYING GAME


fasa
2302

SHIP RECOGNITION MANUAL:

THE FEDERATION



Written by David F. Tepoch, Fantasimulations Associates

Ships designed and Illustrated by Mitch O'Connell

Product Concept: Jordan Weisman

Graphic Design: Dana Knutson

Copyright © 1966, 1983 Paramount Pictures Corporation

All Rights Reserved

Printed in the United States of America

STAR TREK is a trademark of Paramount Pictures Corporation

No part of this book or the contents of this supplement may be reproduced in any form, or by any means without permission in writing from the publisher.

STAR TREK™: The Role-Playing Game is manufactured by FASA Corporation under exclusive license from Paramount Pictures Corporation, the trademark owner.

Published by FASA Corporation

P.O. Box 6930

Chicago IL 60680

DAMAGE CHARTS A (ENGINE FORWARD)

DIE ROLL	FORWARD	DIE ROLL	STARBOARD-FORWARD	DIE ROLL	PORT-FORWARD
1	Sensors out 1-2 turns	1	Sensors out 1-2 turns	1	Sensors out 1-2 turns
2	Forward shield gen damaged (.05)	2	Starboard shield gen damaged	2	Port shield gen damaged
3	One forward weapon damaged	3	Starboard warp engine	3	Port warp engine
4	Superstructure (1)	4	Starboard warp engine	4	Port warp engine
5	Superstructure (2)	5	Starboard warp engine (2)	5	Port warp engine (2)
6	One forward weapon damaged	6	Starboard warp engine	6	Port warp engine
7	Port warp engines	7	Superstructure (1)	7	Superstructure (1)
8	Starboard warp engine	8	Superstructure (2)	8	Superstructure (2)
9	Bridge personnel out	9	One stbd-fwd weapon damaged (.05)	9	One port-fwd weapons damaged (.05)
10	Bridge personnel out	10	Bridge personnel out	10	Bridge personnel out

DIE ROLL	AFT	DIE ROLL	STARBOARD-AFT	DIE ROLL	PORT-AFT
1	Tractor beam damaged	1	Starboard warp engine	1	Port warp engine
2	One aft weapon damaged (.05)	2	One stbd-aft weapon damaged	2	One port aft weapon damaged
3	Superstructure (1)	3	Impulse engine (.02)	3	Impulse engine (.02)
4	Superstructure (2)	4	Superstructure (.02)	4	Superstructure (.02)
5	Superstructure (3)	5	Superstructure (1)	5	Superstructure (1)
6	Impulse engine	6	Superstructure (1)	6	Superstructure (1)
7	Impulse engine	7	Superstructure (2)	7	Superstructure (2)
8	Starboard warp engine	8	Superstructure (5)	8	Superstructure (5)
9	Port warp engine	9	Superstructure (5)	9	Superstructure (5)
10	Aft shield generator damaged	10	Stbd-Aft shield gen damaged	10	Port aft shield gen damaged

DAMAGE CHARTS B (ENGINE CENTRAL)

DIE ROLL	FORWARD	DIE ROLL	STARBOARD-FORWARD	DIE ROLL	PORT-FORWARD
1	Sensors out 1-2 turns	1	Sensors out 1-2 turns	1	Sensors out 1-2 turns
2	Forward shield generator damaged	2	Stbd forward shield gen damaged	2	Port fwd shield gen damaged
3	One forward weapon damaged	3	Starboard warp engine	3	Port warp engine
4	Superstructure (1)	4	Starboard warp engine	4	Port warp engine
5	Superstructure (5)	5	Starboard warp engine	5	Port warp engine
6	One forward weapon damaged	6	Superstructure (.02)	6	Superstructure (.02)
7	Superstructure (5)	7	Superstructure (1)	7	Superstructure (1)
8	Superstructure (1)	8	Superstructure (2)	8	Superstructure (2)
9	Bridge personnel out	9	One stbd-fwd weapon damaged (.05)	9	One stbd fwd weapon damaged (.05)
10	Bridge personnel out	10	Bridge personnel out	10	Bridge personnel out

DIE ROLL	AFT	DIE ROLL	STARBOARD-AFT	DIE ROLL	PORT-AFT
1	Tractor beam damaged	1	Superstructure (2)	1	Superstructure (2)
2	One aft weapon damaged	2	One stbd-aft weapon damaged (.05)	2	One port aft weapon damaged
3	Superstructure (1)	3	Impulse engine (.02)	3	Impulse engine (.02)
4	Superstructure (1)	4	Starboard warp engine	4	Port warp engine
5	Superstructure (3)	5	Starboard warp engine	5	Port warp engine
6	Impulse engine	6	Starboard warp engine	6	Port warp engine
7	Impulse engine	7	Superstructure (1)	7	Superstructure (1)
8	Starboard warp engine (2)	8	Superstructure (2)	8	Superstructure (2)
9	Port warp engine (2)	9	Superstructure (5)	9	Superstructure (5)
10	Aft shield generator damaged	10	Stbd-Aft shield gen damaged	10	Port aft shield gen damaged

DAMAGE CHARTS C (ENGINES TO REAR)

DIE ROLL	FORWARD	DIE ROLL	STARBOARD-FORWARD	DIE ROLL	PORT-FORWARD
1	Sensors out 1-2 turns	1	Sensors out 1-2 turns	1	Sensors out 1-2 turns
2	Forward shield gen damaged (.05)	2	Stbd-fwd shield gen damaged	2	Port fwd shield gen damaged
3	One fwd weapon damaged (.05)	3	Starboard warp engine	3	Port warp engine
4	Superstructure hit (1)	4	Superstructure (.02)	4	Superstructure (.02)
5	Superstructure hit (2)	5	Superstructure (1)	5	Superstructure (1)
6	One forward weapon damaged	6	Superstructure (2)	6	Superstructure (2)
7	Superstructure hit (2)	7	Superstructure (2)	7	Superstructure (2)
8	Superstructure hit (3)	8	Superstructure (5)	8	Superstructure (5)
9	Bridge personnel out	9	One starboard weapon damaged	9	One port weapon damaged
10	Bridge personnel out	10	Bridge personnel out	10	Bridge personnel out

DIE ROLL	AFT	DIE ROLL	STARBOARD-AFT	DIE ROLL	PORT-AFT
1	Tractor beam damaged	1	Starboard warp engine	1	Port warp engine
2	One aft weapon damaged (.05)	2	Starboard warp engine	2	Port warp engine
3	Superstructure (1)	3	Starboard warp engine	3	Port warp engine
4	Starboard warp engine	4	Impulse engine (.02)	4	Impulse engine (.02)
5	Starboard warp engine	5	Superstructure (1)	5	Superstructure (1)
6	Impulse engine	6	Superstructure (1)	6	Superstructure (1)
7	Impulse engine	7	Superstructure (2)	7	Superstructure (2)
8	Port warp engine	8	Superstructure (5)	8	Superstructure (5)
9	Port warp engine	9	Stbd-aft shield gen damaged	9	Port-aft shield gen damaged
10	Aft shield generator damaged	10	One stbd-aft weapon damaged (.05)	10	One port-aft weapon damaged (.05)

ENTRY
SCAN
ESC
CTRL
RDT
RESET
INDEX
IUT
PCA
MIN
SCD

FEDERATION

Red indicator lights
Yellow indicator lights
Green indicator lights

0 9X
00 9X-
000 9X--
0000 9X---

Q W E R T Y U I O P & ? ! :
A S D F G H J K L Z X C V B N M A E O C % () ///
SET LOCK ON OFF

BADER

SHIP DATA
Hull Numbers 6801 - 6950
Vessel Type Scout
Contractor A'Alakor Landias Inc..
Cost 1226.0 MCr
Metric Tonnage 120,000mt
Max Safe Crs Spd W7
Emergency Speed W9
Weaponry 6 FH-8 phasers (3 banks of 2)
2 FP-3 photon torpedoes

DIMENSIONS
Length (Overall) 232.73m
Breadth (Overall) 179.83m
Height (Overall) 79.55m
Deck Ceiling Height 3.0m (avg)
Cargo Units 510

Five red indicator lights

ENTRY
SCAN
ESC
CTRL
RDT
RESET
INDEX
IUT
PCA
MIN
SGD

FEDERATION

Red indicator lights
Yellow indicator lights
Green indicator lights

0 9X
00 9X-
000 9X- -
0000 9X- - -

Q W E R T Y U I O P & ? | :
A S D F G H J K L Z B S c e
X C V B N M A E O C % () ///
SET LOCK ON OFF

KAREKH



1 2
3 4
5 6
7 8
9 0

SHIP DATA

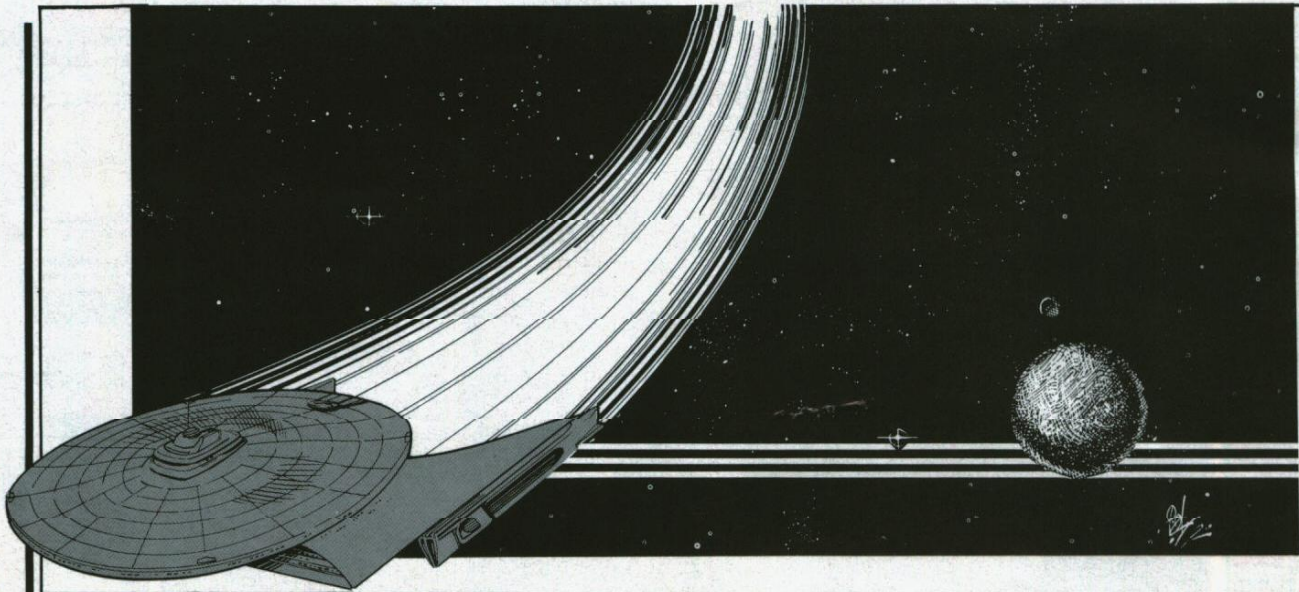
Hull Numbers	17001 - 17125
Vessel Type	Explorer, Small
Contractor	S'Lek Varion
Cost	16 MCr
Metric Tonnage	6000mt
Max Safe Crs Spd	W7.5
Emergency Speed	W9
Weaponry	None

DIMENSIONS

Length (Overall)	35.18m
Breadth (Overall)	26.90m
Height (Overall)	6.80m
Deck Ceiling Height	2.8m (avg)
Cargo Units	8

Five red indicator lights

"BADER" CLASS SCOUT



MOBILITY DATA

WARP ENGINES	(2)
TYPE	FWE
MANEUVER POINTS RATIO	3/1
POWER UNITS	13 each
STRESS CHARTS	G/K
IMPULSE ENGINE	
TYPE	FID
POWER UNITS	4

DEFLECTORS

TYPE	FSH
POWER RATIO	1/2
SHIELD POINTS	12

DAMAGE CHARTS C

SUPERSTRUCTURE 10

ARMAMENTS

TYPE	3 banks of 2 each FH-8 phasers
LOCATION	2 banks mounted upper hull P/S (fire fwd and P/S), 1 bank upper hull firing fwd.
FIRING CHART	5
POWER RANGES	0 - 5
TYPE	2 FP-3 photon torpedoes
LOCATION	Mounted lower hull firing fwd.
FIRING CHART	18
POWER TO ARM	1 power point each.

OTHER FEATURES

TRANSPORTERS	3 6-person standard use 2 22-person emergency 2 cargo
SHUTTLECRAFT	4
CREW REQUIREMENTS	264
PASSENGER FACILITIES	Up to 45 civilians.

The BADER class Scout was designed and constructed by A'Alakor Landiss Inc., an Andorian shipyard. The class, however, is named after a legendary Earth figure, again showing the powerful influence of the UFP naming committee. The BADER is equipped with small civilian Starfleet vessels. The BADER class, however, normally has a small civilian research contingent aboard to carry out research. In fact, the BADER class is the vessel normally associated with the coveted Sagan Award for research, in which a group of individuals or a corporation receives the use of a research vessel and its crew for a 2 year period for research contributing to the advancement of Federation science. The BADER is an excellent vessel for this purpose. The phrase "Flying a BADER", heard often around research facilities near the annual competition time, originates from these endeavors.

"KAREKH" CLASS (VULCAN EXPLORATION VESSEL)

VESSEL CLASS KAREKH
HULL NUMBERS 17001 - 17125
VESSEL TYPE Explorer, Small
CONTRACTOR S'Lek Varien
COST 16 MCr

DIMENSIONS

OVERALL LENGTH 35.18m
OVERALL WIDTH 26.90m
OVERALL HEIGHT 6.80m
DECK CEILING HEIGHT 2.80m
CARGO UNITS 8

METRIC TONNAGE 6000mt

The KAREKH is a Vulcan designed and built exploration vessel. It has two decks similar in configuration to the MISSION class. One notable difference between this and other Federation vessels of its type is its lack of weaponry. The ship does have good deflectors, but they are there for the protection of the crew against unknowns more than against hostiles. The KAREKH is used to explore areas not deemed important enough to warrant large vessels, or as initial exploration ships to determine the need for larger vessels with extensive facilities.

MOBILITY DATA

WARP ENGINES (2)
TYPE FWA
MANEUVER POINTS RATIO 1.5/1
POWER UNITS 6 each
STRESS CHARTS G/K

IMPULSE ENGINE

TYPE FIA
POWER UNITS 2

MAX SAFE CRUISING SPEED W7.5

EMERGENCY SPEED W9

ARMAMENTS None

DEFLECTORS

TYPE FSB
POWER RATIO 1/2
SHIELD POINTS 6

DAMAGE CHARTS B

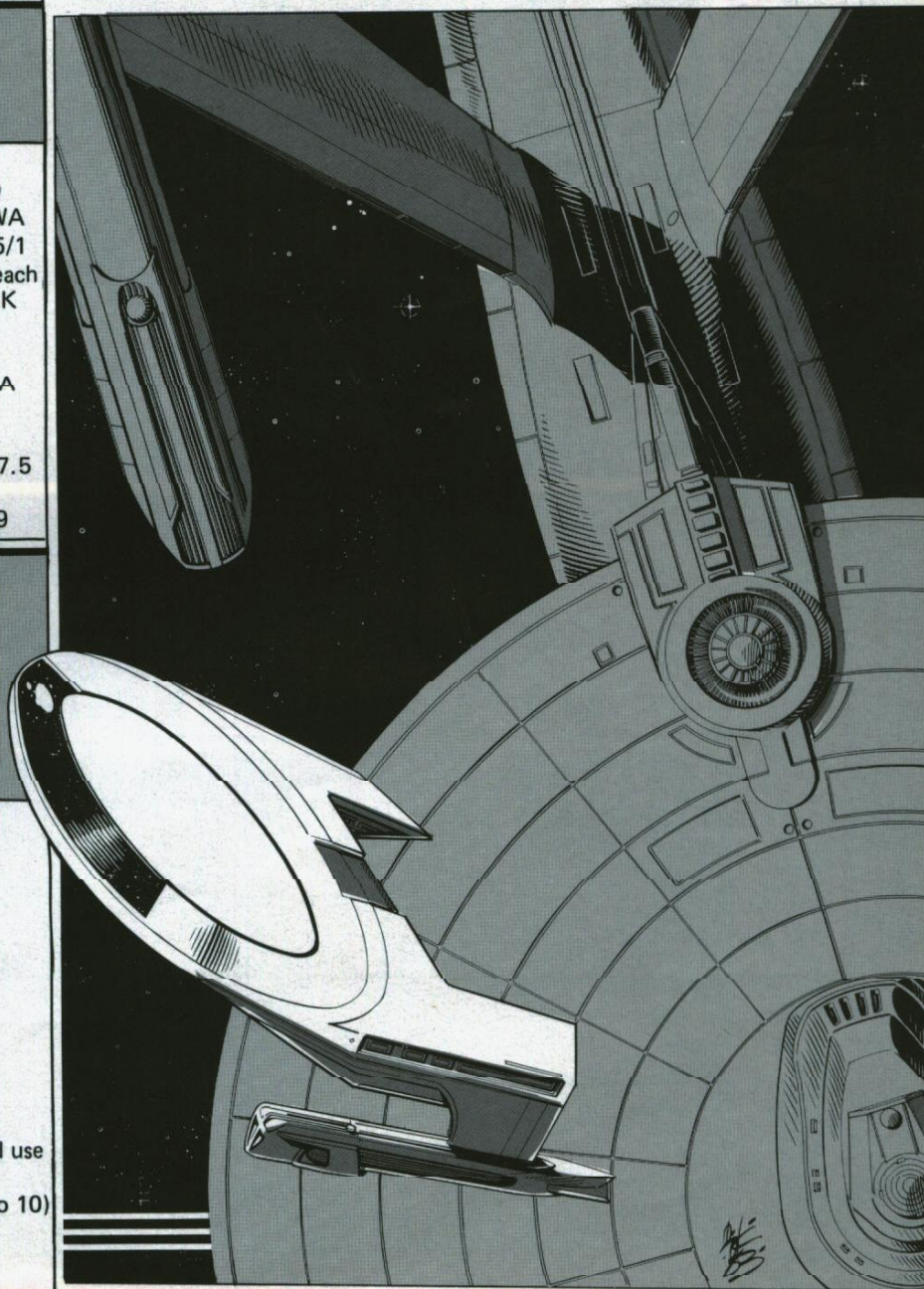
SUPERSTRUCTURE 5

OTHER FEATURES

TRANSPORTERS 1 2-person standard use

CREW REQUIREMENTS 5 normal (up to 10)

PASSENGER FACILITIES None



ENTRY
SCAN
FSC
CTRL
RDT
RESET
INDEX
IUT
PCA
MIN
SGD

FEDERATION

Red indicator lights
Yellow indicator lights
Green indicator lights

0 9X
00 9X-
000 9X-
0000 9X--

Q W E R T Y U I O P & ? ! :
A S D F G H J K L Z B \$ % &#grave;
X C V B N M A E O C % () ///
SET LOCK ON OFF
1 2
3 4
5 6
7 8
9 0

BRENTON

SHIP DATA

Hull Numbers	1200 - 1250
Vessel Type	Cruiser
Contractor	A'Alakor Landiss Inc/l.
Cost	1476.0 MCr
Metric Tonnage	160,000mt
Max Safe Crs Spd	W6
Emergency Speed	W8
Weaponry	6 PH-5 phasers (3 banks of 2) 3 FP-3 photon torpedo tubes

DIMENSIONS

Length (Overall)	259.39m
Breadth (Overall)	253.88m
Height (Overall)	55.43m
Deck Ceiling Height	3.0m (avg)
Cargo Units	450

Five red indicator lights

ENTRY
SCAN
ESC
CTRL
RDT
RESET
INDEX
IUT
PCA
MIN
SGD

FEDERATION

Red indicator lights
Yellow indicator lights
Green indicator lights

0 9X
00 9X-
000 9X-
0000 9X--

Q W E R T Y U I O P & ? ! :
A S D F G H J K L Z B S e s
X C V B N M Æ Ç Ø Ç % () //
SET LOCK ON OFF
1 2
3 4
5 6
7 8
9 0

SUNSHINE

Sunshine

SHIP DATA

Hull Numbers	N001230 - N001255
Vessel Type	Passenger Liner
Contractor	Antares Liners, Inc.
Cost	807.5 MCr
Metric Tonnage	130,000mt
Max Safe Crs Spd	W6
Emergency Speed	W8
Weaponry	None

DIMENSIONS

Length (Overall)	327.93m
Breadth (Overall)	232.73m
Height (Overall)	74.05m
Deck Ceiling Height	3.0m (avg)
Cargo Units	1007

Five red indicator lights

"BRENTON" CLASS CRUISER

MOBILITY DATA

WARP ENGINES (2)
 TYPE FWF
 MANEUVER POINTS RATIO 4/1
 POWER UNITS 20 each
 STRESS CHARTS G/L

IMPULSE ENGINES

TYPE FID
 POWER UNITS 4

ARMAMENTS

TYPE 3 banks of 2 FH-5 phasers
 LOCATION 2 banks upper hull P/S (fire fwd and P/S), 1 bank upper hull (fires fwd)

FIRING CHART 17
 POWER RANGES 0-4

TYPE 3 FP-3 photon torpedo tubes
 LOCATION 2 fwd, 1 aft
 FIRING CHART 18
 POWER TO ARM 1 point

DEFLECTORS

TYPE FSK
 POWER RATIO 1/2
 SHIELD POWER 14

DAMAGE CHARTS C

SUPERSTRUCTURE 18

OTHER FEATURES

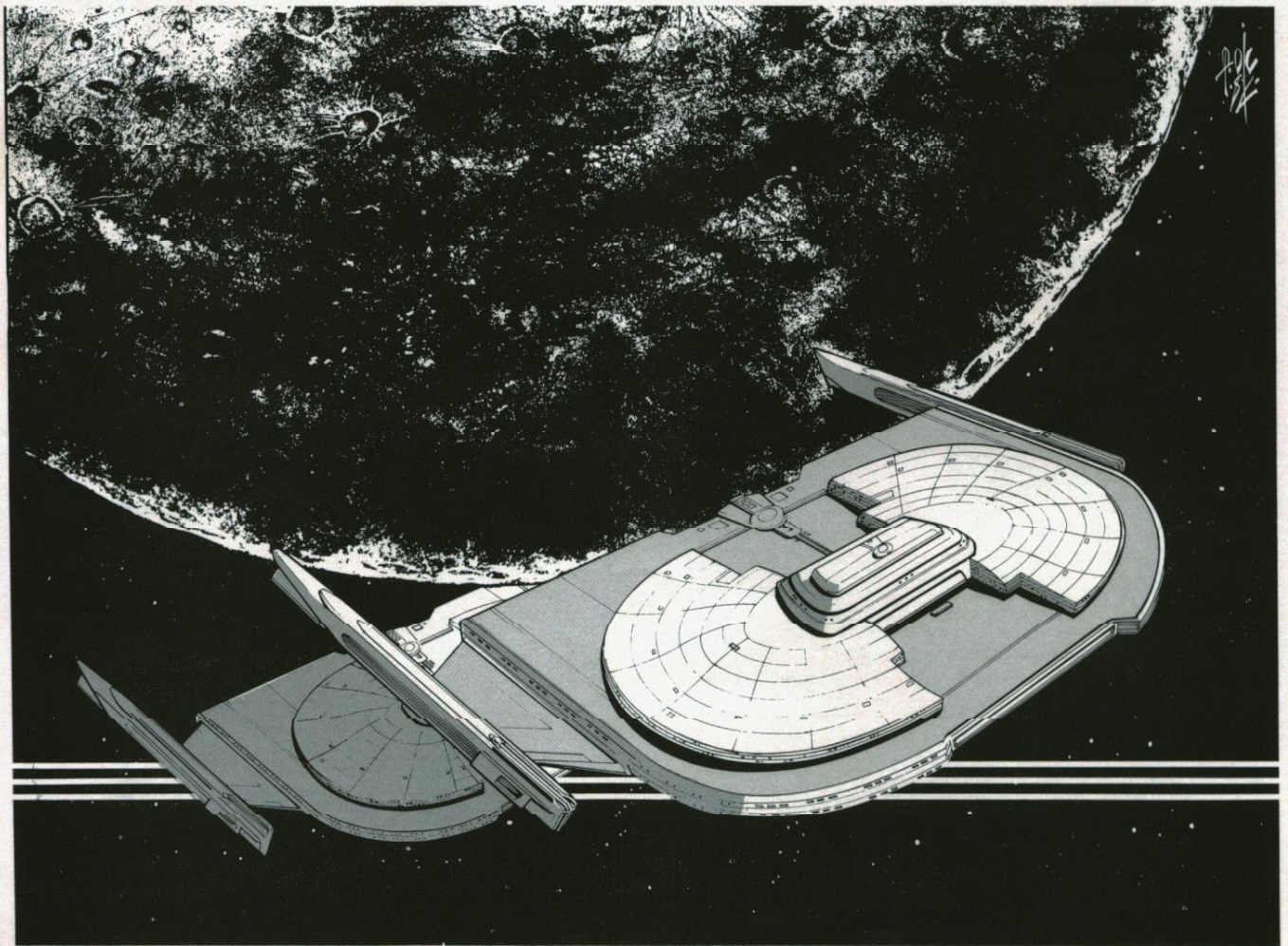
TRANSPORTERS 4 6-person standard use
 3 22-person emergency
 2 cargo

SHUTTLECRAFT 4

CREW REQUIREMENTS 378

PASSENGER FACILITIES None standard

The BRENTON was designed as a fill-in for the ENTERPRISE/CONSTITUTION classes of cruisers. The BRENTON is cheaper to build and cheaper to operate, having a much smaller crew. The BRENTON also was designed more for combat than for research, although it does have some facilities on board. The BRENTON was designed for the older style warp nacelles, but was changed during construction when the newer design became standard usage. The aft-firing torpedo caused many an opponent to think twice before attacking from the rear. In fact, when the BRENTON class first saw combat with the Klingons, the Klingons were allowed to approach from the rear. The Klingons, seeing the perfect chance to attack, were annihilated at close range by the "stupid, crippled Federation captains". This action has caused the Klingons to treat the BRENTONS with respect.



"SUNSHINE" CLASS LINER

MOBILITY DATA

WARP ENGINES (2)
 TYPE FWE
 MANEUVER POINTS RATIO 4/1
 POWER UNITS 8 each
 STRESS CHARTS G/K

IMPULSE ENGINE

TYPE FIC
 POWER UNITS 1

ARMAMENTS None

DEFLECTORS

TYPE FSA
 POWER RATIO 1/1
 SHIELD POINTS 6

DAMAGE CHARTS C

SUPERSTRUCTURE 20

OTHER FEATURES

TRANSPORTERS 10 6-person standard use
 8 22- person emergency
 5 cargo

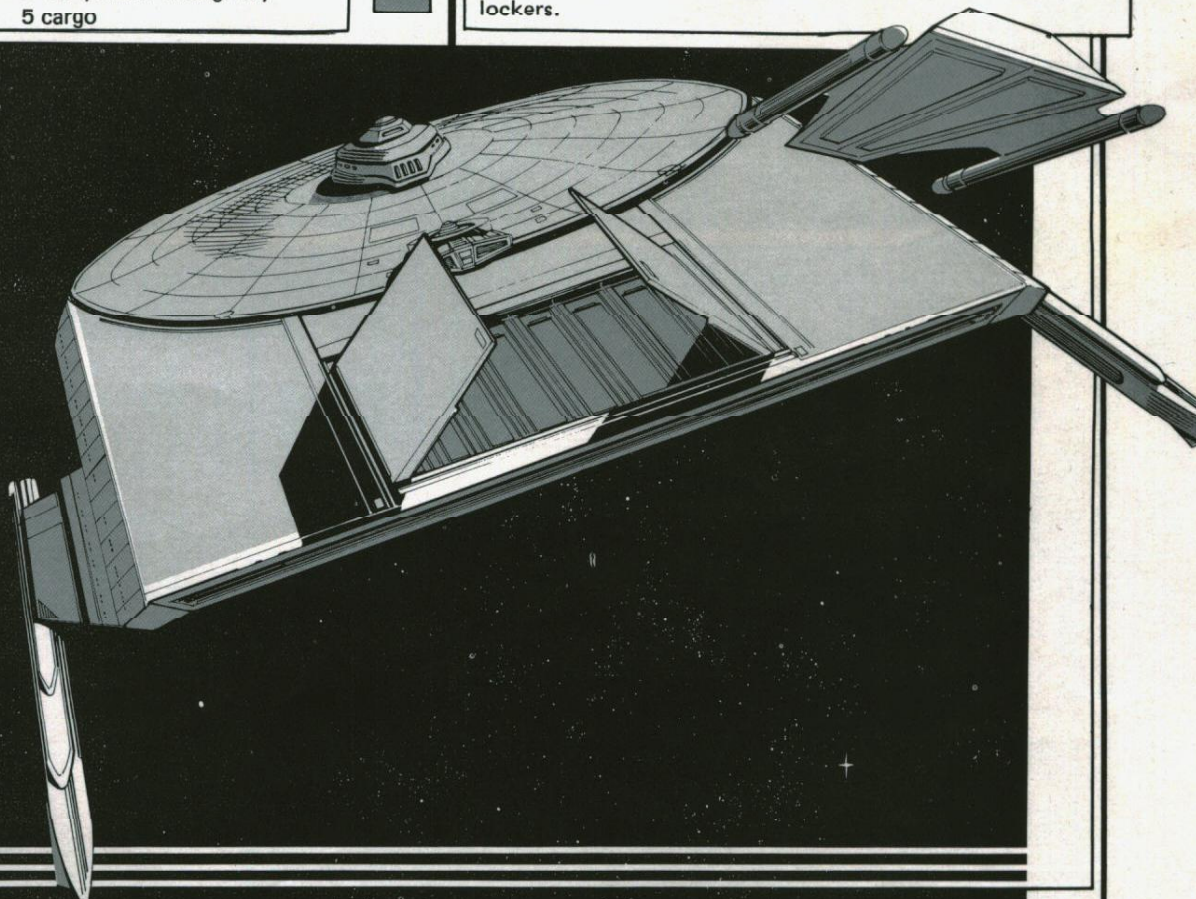
SHUTTLECRAFT 6 carried, has facilities to house up to 20 of average size.

CREW REQUIREMENTS 245

PASSENGER FACILITIES Up to 600

The SUNSHINE class passenger liner is considered the most luxurious in the Federation. The service is the best, the staterooms are the finest, the gambling is honest (most of the time), and, naturally, the prices are the highest. The regular accomodation staterooms are affordable for most vacationers, and waiting lists can be up to one year long for passage on a round trip ticket. These staterooms are comparable to those found on 20th century ocean-going liners. The Royal Suites on the SUNSHINE CLASS, however, have to be seen to be believed. Some of these suites have private physical fitness centers with staff. The largest suite on the vessel even has a small private pool.

The SUNSHINE class is equipped with deflectors of minimal combat strength, instead of just the normal navigational deflectors. Although these ships do not operate in hostile areas there is always the risk of pirates, so the deflectors were incorporated into the design. No offensive weaponry is carried for ship to ship combat, but hand weapons are carried aboard, locked in several small arms lockers.



ENTRY
SCAN
ESC
CTRL
RDT
RESET
INDEX
IUT
PCA
MIN
SGD

FEDERATION

Red indicator lights
Yellow indicator lights
Green indicator lights

0 9X
00 9X
000 9X
0000 9X

Q W E R T Y U I O P & ? | :
A S D F G H J K L Z B S c £
X C V B N M Æ Ç Ø C % () ///
SET LOCK ON OFF
1 2
3 4
5 6
7 8
9 0

C'LAIH

SHIP DATA

Hull Numbers	91701 - 92500
Vessel Type	Long-range Shuttle
Contractor	M'Yengh Yards Ltd.
Cost	13.25 MCr
Metric Tonnage	5250mt
Max Safe Crs Spd	W7.5
Emergency Speed	W9
Weaponry	None

DIMENSIONS

Length (Overall)	25.7m
Breadth (Overall)	24.8m
Height (Overall)	7.6m
Deck Ceiling Height	2.8m (avg)
Cargo Units	2

Five red indicator lights

ENTRY
SCAN
ESC
CTRL
RDT
RESET
INDEX
IUT
PCA
MIN
SGD

FEDERATION

Red indicator lights
Yellow indicator lights
Green indicator lights

0 9X
00 9X-
000 9X-
0000 9X--

Q W E R T Y U I O P & ? ! :
A S D F G H J K L Z B \$ %
X C V B N M Æ Ç Ø Ç % ()
SET LOCK ON OFF

DERF

1 2
3 4
5 6
7 8
9 0

SHIP DATA

Hull Numbers	2700 - 2799
Vessel Type	Frigate
Contractor	Rakala Industries Inc.
Cost	1186.0 MCr
Metric Tonnage	100,000mt
Max Safe Crs Spd	W7
Emergency Speed	W9
Weaponry	8 PH-5 phasers (4 banks of 2) 4 FP-3 photon torpedo tubes

DIMENSIONS

Length (Overall)	290.0m
Breadth (Overall)	127.0m
Height (Overall)	50.0m
Deck Ceiling Height	3.0m (avg)
Cargo Units	280

Five red indicator lights

C'LAIH LONG RANGE SHUTTLE

MOBILITY DATA

WARP ENGINES	(2)
TYPE	FWA
MANEUVER POINTS RATIO	1.5/1
POWER UNITS	6 each
STRESS CHARTS	G/K

IMPULSE ENGINE	
TYPE	FIA
POWER UNITS	2

MAX SAFE CRUISING SPEED	W7.5
-------------------------	------

EMERGENCY SPEED	W9
-----------------	----

ARMAMENTS	None
-----------	------

DEFLECTORS

TYPE	FSA
POWER RATIO	1/1
SHIELD POWER	6

DAMAGE CHARTS	B
---------------	---

SUPERSTRUCTURE	6
----------------	---

OTHER FEATURES	None
----------------	------

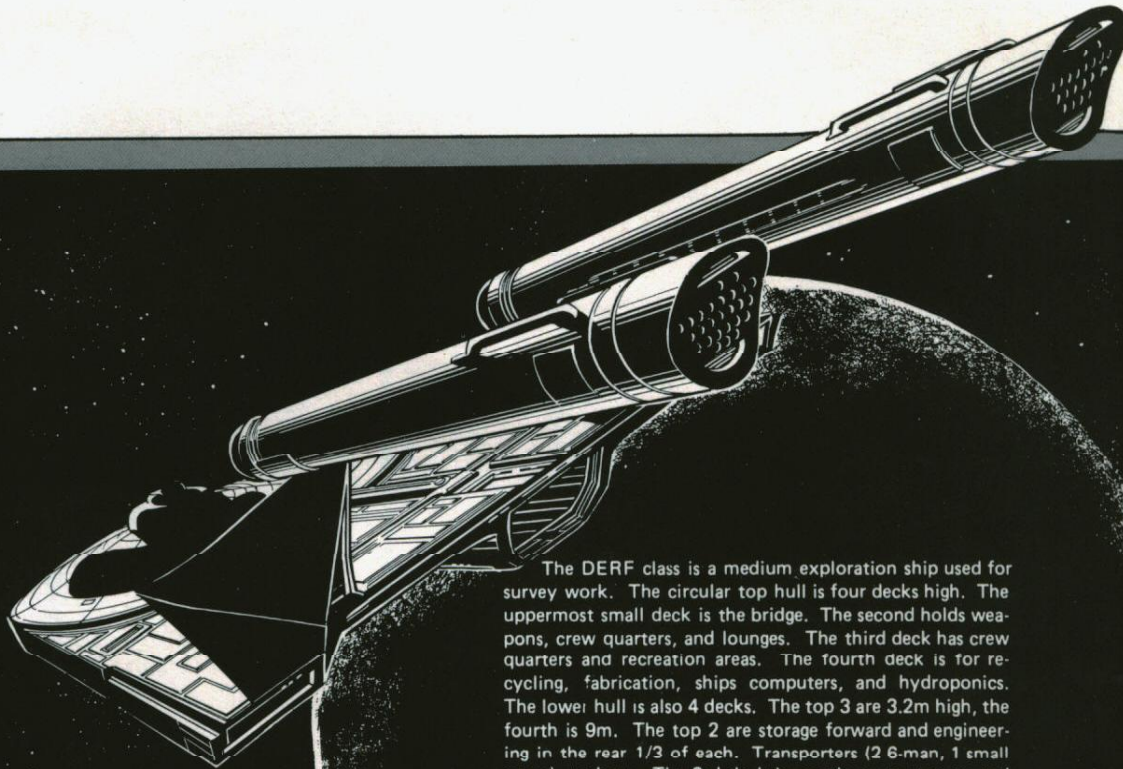
CREW REQUIREMENTS	1
-------------------	---

PASSENGER FACILITIES	1 or 2
----------------------	--------

The C'Laih is a Caitian designed long-range shuttle. It has two low-ceilinged decks with very little space. The vessel is operated by one crew member and automatics in the ship's computer.



"DERF" CLASS



The DERF class is a medium exploration ship used for survey work. The circular top hull is four decks high. The uppermost small deck is the bridge. The second holds weapons, crew quarters, and lounges. The third deck has crew quarters and recreation areas. The fourth deck is for recycling, fabrication, ships computers, and hydroponics. The lower hull is also 4 decks. The top 3 are 3.2m high, the fourth is 9m. The top 2 are storage forward and engineering in the rear 1/3 of each. Transporters (2 6-man, 1 small cargo) are here. The 3rd deck is mostly parts storage, and the bottom deck is mostly open space. Shuttles recover buoy, then enter forward, where the retrieved equipment undergoes an "assembly line" maintenance routine. When repaired, a shuttle takes the device out the aft doors and replaces it on the navigation route. Early warning sensors, beacons, and communications relay stations undergo the same treatment. Special shuttles with small tractor beams are used for this procedure. Vessels are named after historical places in the Federation.

MOBILITY DATA

WARP ENGINES	(2)
TYPE	FWD
MANEUVER POINTS RATIO	2/1
POWER UNITS	18 each
STRESS CHARTS	M/G

IMPULSE ENGINE

TYPE	FID
POWER UNITS	4

ARMAMENTS

TYPE	2 banks of 2 FH-4 phasers
LOCATION	P/S upper main hull (fire fwd and P/S)
FIRING CHART	16
POWER RANGES	0-3

DEFLECTORS

TYPE	FSH
POWER RATIO	1/2
SHIELD POINTS	12

DAMAGE CHARTS C

SUPERSTRUCTURE 11

OTHER FEATURES

TRANSPORTERS 2 6-person standard use
1 cargo

SHUTTLECRAFT 2 passenger
5 work pod shuttles

CREW REQUIREMENTS 72 (Below minimal requirements due to nature of vessel)

PASSENGER FACILITIES None

ENTRY
SCAN
FSC
CTRL
RDT
RESET
INDEX
IUT
PCA
MIN
SGD

FEDERATION

Red indicator lights
Yellow indicator lights
Green indicator lights

0 9X
00 9X-
000 9X-
0000 9X--

Q W E R T Y U I O P & ? ! :
A S D F G H J K L Z B S €
X C V B N M Æ Œ Ø Ç % ()
SET LOCK ON OFF
1 2
3 4
5 6
7 8
9 0

BAKER

Green indicator lights

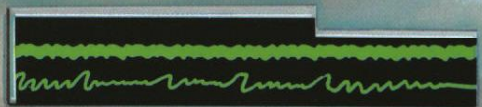
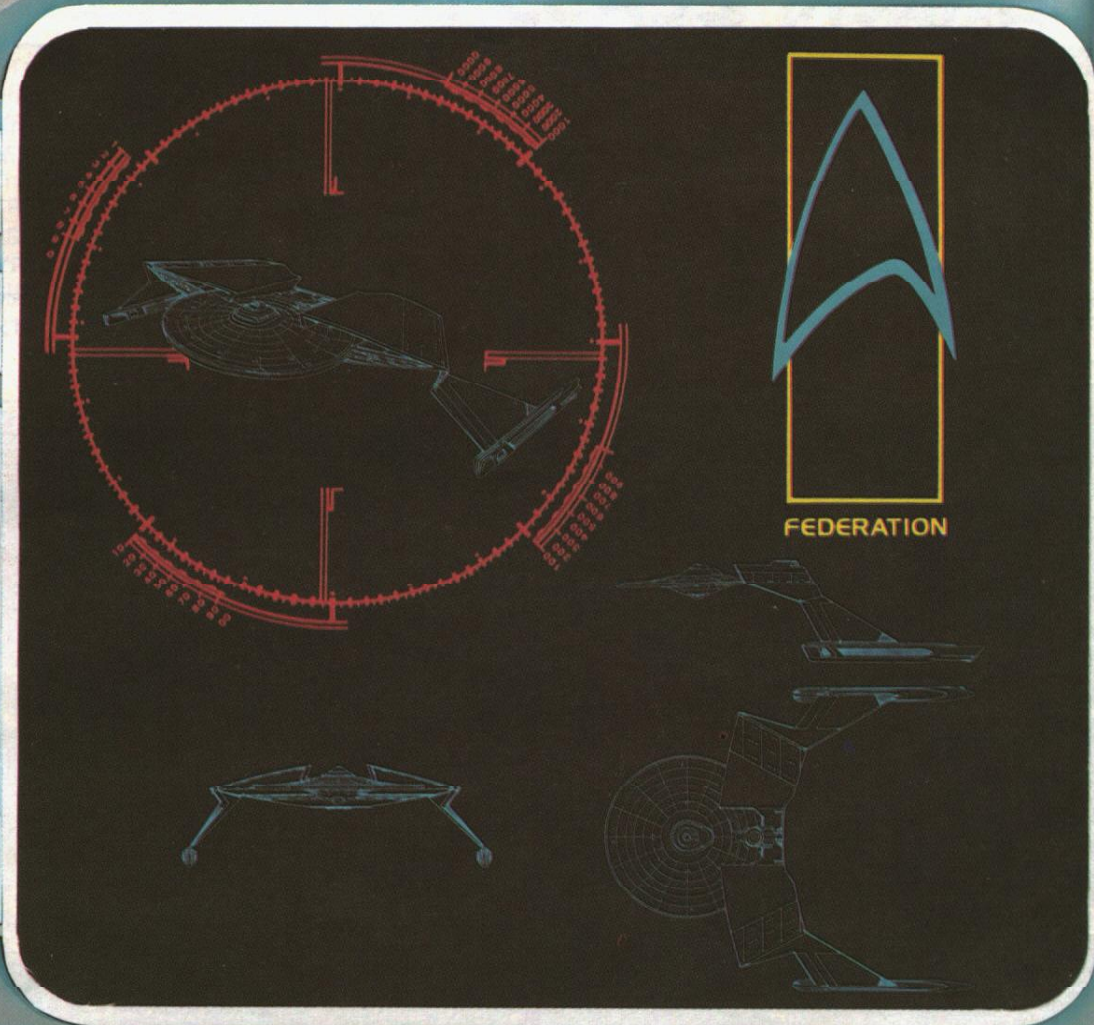
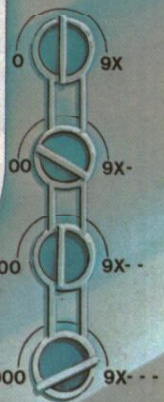
SHIP DATA

Hull Numbers	4701 - 5000
Vessel Type	Destroyer
Contractor	Federation Naval Yards
Cost	1246.5 MCr
Metric Tonnage	122,000mt
Max Safe Crs Spd	W7
Emergency Speed	W9
Weaponry	6 FH-8 phasers (3 banks of 2) 2 FP-2 photon torpedoes

DIMENSIONS

Length (Overall)	301.70m
Breadth (Overall)	148.10m
Height (Overall)	76.59m
Deck Ceiling Height	3.0m (avg)
Cargo Units	110

Red indicator lights



SHIP DATA	
Hull Numbers	2301 - 2350
Vessel Type	Frigate
Contractor	Chandley Works Ltd.
Cost	1748.5 MCr
Metric Tonnage	175,000mt
Max Safe Crs Spd	W7
Emergency Speed	W8
Weaponry	6 FH-11 phasers (3 banks of 2) 4 FP-6 photon torpedoes
DIMENSIONS	
Length (Overall)	314.82m
Breadth (Overall)	261.92m
Height (Overall)	90.13m
Deck Ceiling Height	3.0m (avg)
Cargo Units	825



"BAKER" CLASS DESTROYER

MOBILITY DATA

WARP ENGINES	(2)
TYPE	FWE
MANEUVER POINTS RATIO	3/1
POWER UNITS	13 each
STRESS CHARTS	G/K

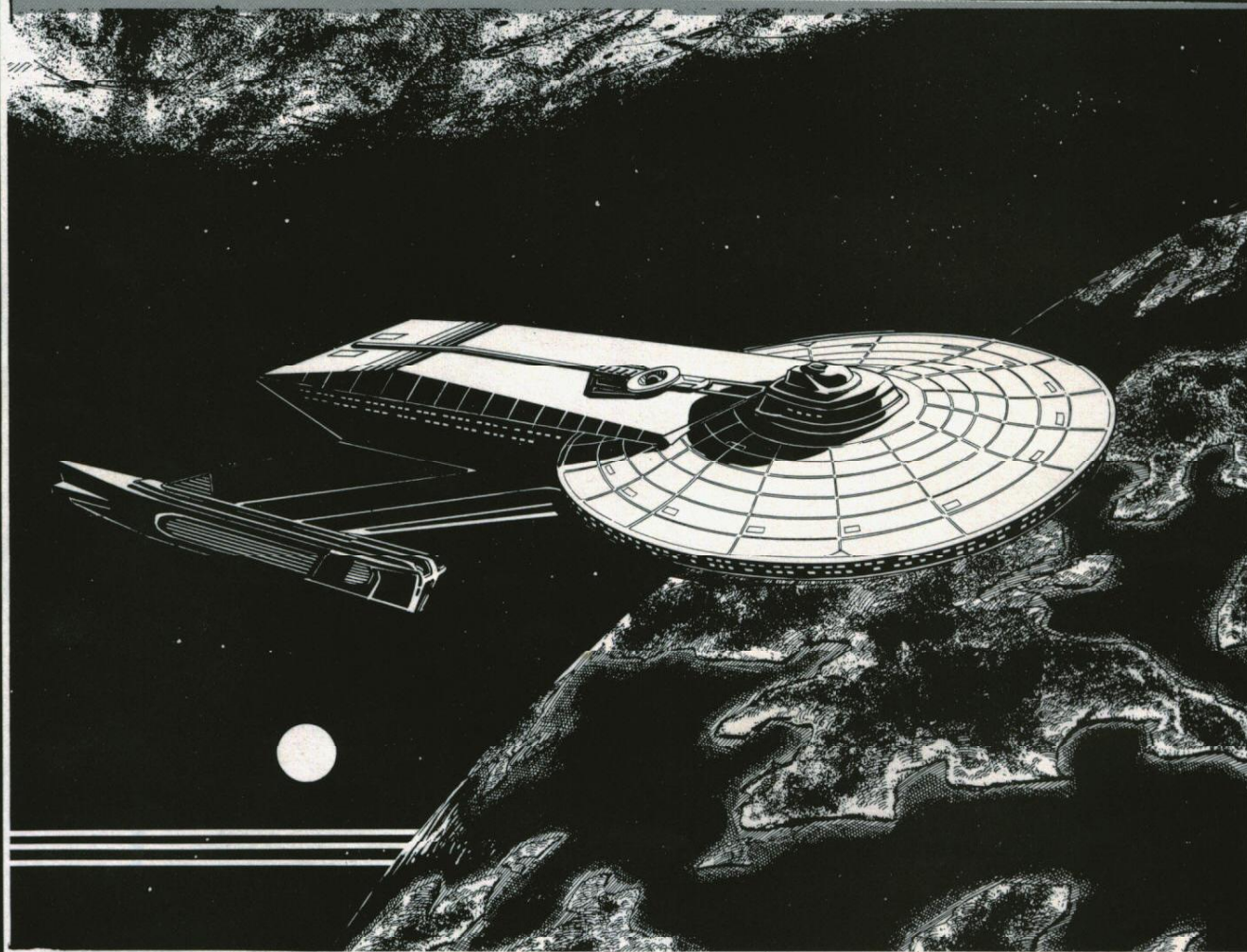
IMPULSE ENGINE

TYPE	FID
POWER UNITS	4

ARMAMENTS

TYPE	3 banks of 2 each FH-8 phasers
LOCATION	2 banks upper main hull P/S (fire fwd and P/S) and 1 bank fwd upper main hull (fires fwd)
FIRING CHART	5
POWER RANGES	0-5

TYPE	2 FP-2 photon torpedoes
LOCATION	Lower main hull (fire fwd)
FIRING CHART	3
POWER TO ARM	1 point each



DEFLECTORS

TYPE	FSI
POWER RATIO	1/3
SHIELD POWER	12

DAMAGE CHARTS C

SUPERSTRUCTURE 15

OTHER FEATURES

TRANSPORTERS	4 6-person standard use 2 22-person emergency 1 small cargo
--------------	---

SHUTTLECRAFT 2 7-passenger

CREW REQUIREMENTS 265

PASSENGER FACILITIES None

The BAKER class destroyer is slated to gradually replace the older LARSON class. Equipped with more powerful weaponry, the vessel is expected to be very popular along the borders. The BAKER was the first combat vessel to be designed from the ground up with the newer style warp nacelles. The BAKER has been ordered into mass production, with the first order totalling 300 of the ships.

"CHANDLEY" CLASS FRIGATE

MOBILITY DATA

WARP ENGINES	(2)
TYPE	FWC
MANEUVER POINTS RATIO	3/1
POWER UNITS	16 each
STRESS CHARTS	O/M
IMPULSE ENGINE	
TYPE	FIF
POWER UNITS	16

ARMAMENTS

TYPE	6 FH-11 phasers (3 banks of 2)
LOCATION	2 banks mounted upper main hull (P/S) (fire fwd and P/S) and 1 bank upper main hull fwd (fires fwd).

FIRING CHART	20
POWER RANGES	0 - 10

TYPE	4 FP-6 photon torpedoes
LOCATION	2 fwd in lower main hull (fire fwd), 2 aft in center of hull (fire aft).

FIRING CHART	13
POWER TO ARM	1 power point

DEFLECTORS

TYPE	FSO
POWER RATIO	1/3
SHIELD POINTS	16

DAMAGE CHARTS	C
---------------	---

SUPERSTRUCTURE	28
----------------	----

OTHER FEATURES

TRANSPORTERS	8 6-person standard use 8 22-person emergency 4 cargo
--------------	---

SHUTTLECRAFT	6
--------------	---

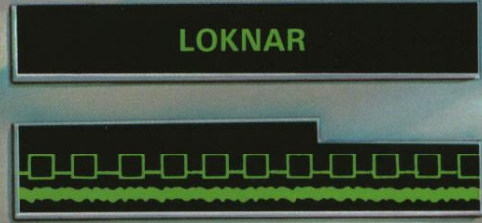
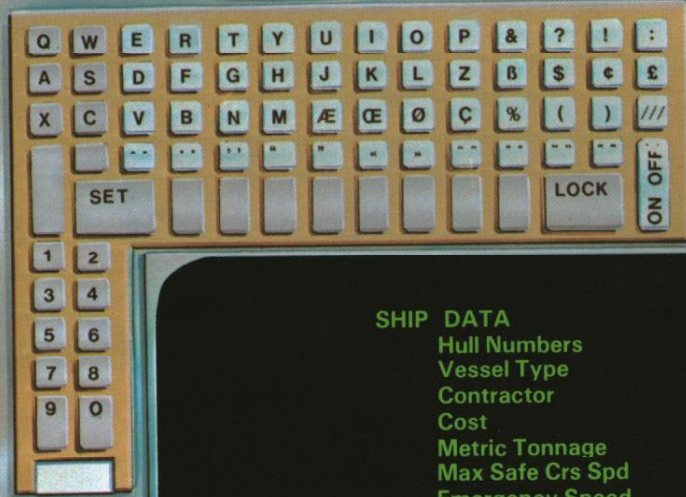
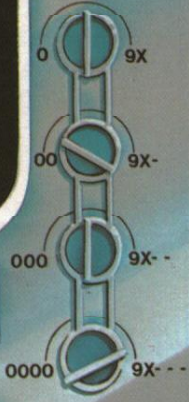
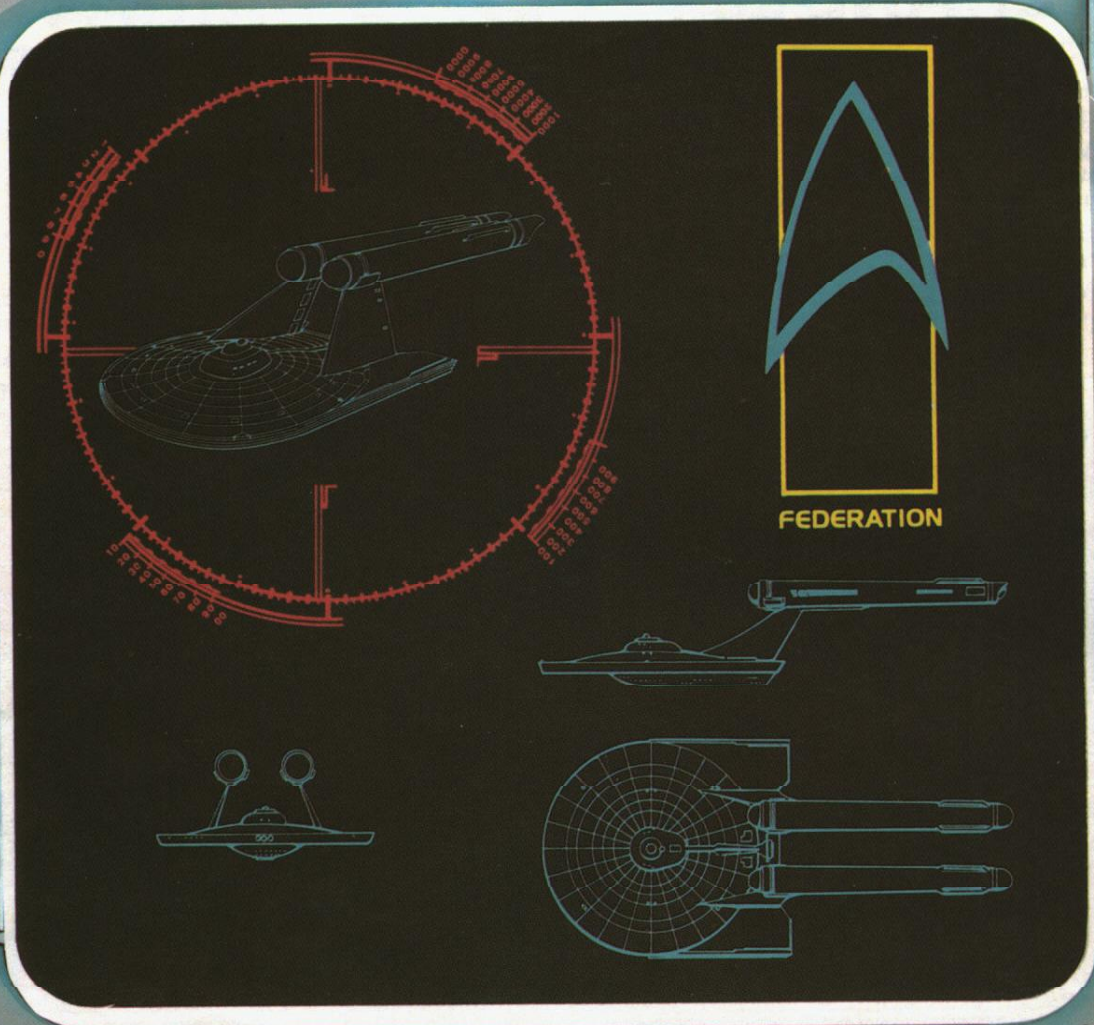
CREW REQUIREMENTS	363
-------------------	-----

PASSENGER FACILITIES	Has accommodations for up to 250 Marines with equipment.
----------------------	--

The CHANDLEY class Frigate is designed primarily as a fighting vessel. The fore and aft torpedoes along with the powerful phasers make it a formidable foe indeed. And if the opponent lowers shields, either voluntarily or involuntarily, the CHANDLEY is ready. The class normally carries a Marine company for use as reinforcements for use in boarding parties or for landing parties planetside. These Marines are housed in the "wings" of the vessel.

The CHANDLEY carries the rare distinction of being named after the company that built the class. This is due to the fact that the contracting company is owned by the descendants of Rear Admiral Thomas Chandley, an old Earth planet-side naval hero. Thomas Chandley was highly decorated in the Aleutian Naval conflict of 2003 because of the brilliant strategic blockade he executed. The UFP decided unanimously to name the class after Chandley when it was discovered that the Chandley firm had submitted the lowest bid for the class.





SHIP DATA	
Hull Numbers	20100 - 20179
Vessel Type	Survey Ship
Contractor	Chandley Works Ltd.
Cost	927 MCr
Metric Tonnage	115,000mt
Max Safe Crs Spd	W6
Emergency Speed	W8
Weaponry	4 FH-4 phasers (2 banks of 2)
DIMENSIONS	
Length (Overall)	274m
Breadth (Overall)	128m
Height (Overall)	65m
Deck Ceiling Height	3.2m (avg)
Cargo Units	350



ENTRY
SCAN
ESC
CTRL
RDT
RESET
INDEX
IUT
PCA
MIN
SGD

FEDERATION

Red indicator lights
Yellow indicator lights
Green indicator lights

0 9X
00 9X-
000 9X- -
0000 9X- - -

Q W E R T Y U I O P & ? | :
A S D F G H J K L Z B S c e
X C V B N M Æ œ ø C % () ///
SET LOCK ON OFF
1 2
3 4
5 6
7 8
9 0

RANGER

SHIP DATA

Pull Numbers	7101 - 7150
Vessel Type	Scout, Small
Contractor	Rakala Industries, Inc.
Cost	281.5 MCr
Metric Tonnage	39,000mt
Max Safe Crs Spd	W8
Emergency Speed	W9
Weaponry	2 individual FH-2 phasers 2 FP-3 photon torpedo tubes

DIMENSIONS

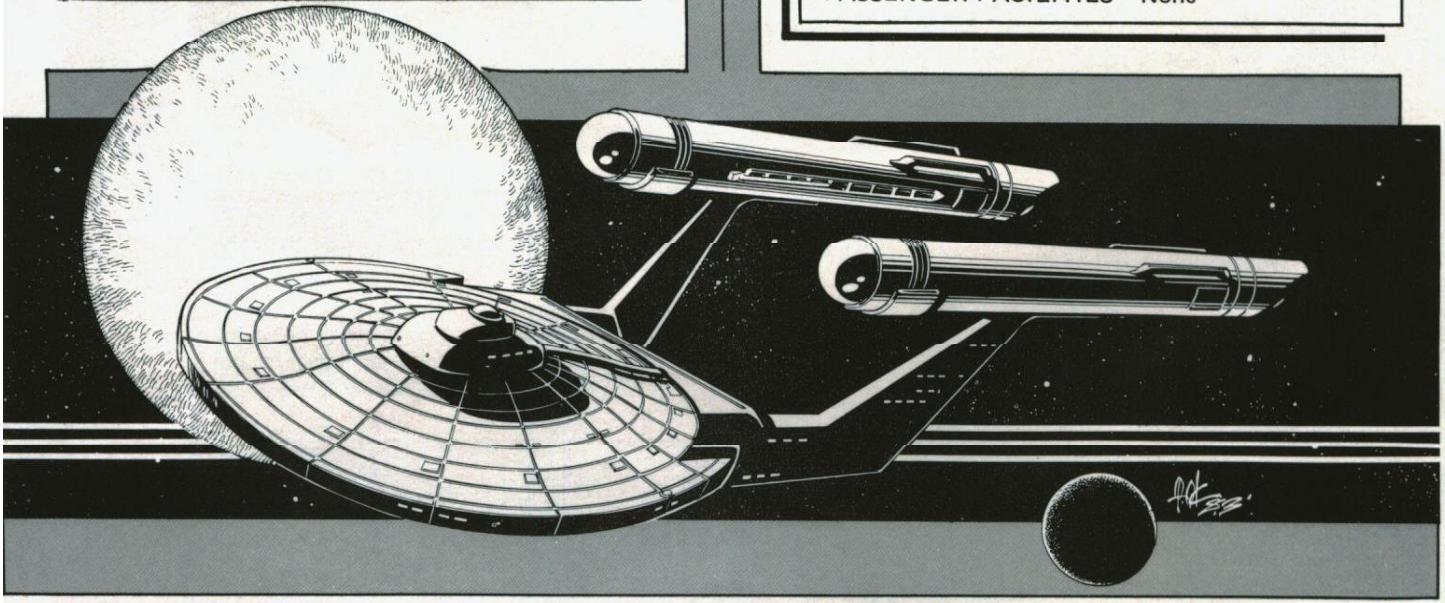
Length (Overall)	86.8m
Breadth (Overall)	57.36m
Height (Overall)	20.8m
Deck Ceiling Height	3.0m (avg)
Cargo Units	20

Red indicator lights

"LOKNAR" CLASS

MOBILITY DATA	
WARP ENGINES	(2)
TYPE	FWE
MANEUVER POINTS RATIO	3/1
POWER UNITS	13 each
STRESS CHARTS	G/K
IMPULSE ENGINE	
TYPE	FIC
POWER UNITS	3
MAX SAFE CRUISING SPEED	W7
EMERGENCY SPEED	W9
ARMAMENTS	
TYPE	8 PH-5 phasers in 4 banks of 2
LOCATION	2 fwd banks upper main hull (2 fwd/stbd arcs - 2 fwd/pt arcs), 1 bank upper and 1 lower rear hull (all fire aft)
FIRING CHART	17
POWER RANGES	0-4

TYPE	4 FP-3 photon torpedo tubes
LOCATION	3 fwd center main hull / 1 aft upper main hull
FIRING CHART	18
POWER TO ARM	1 point each
DEFLECTORS	
TYPE	FSK
POWER RATIO	1/2
SHIELD POWER	14
DAMAGE CHARTS	C
SUPERSTRUCTURE	14
OTHER FEATURES	
TRANSPORTERS	3 6-person standard use 1 22-person emergency 1 small cargo
SHUTTLECRAFT	2
CREW REQUIREMENTS	79 (much below the normal minimum)
PASSENGER FACILITIES	None



This is a 'muscle' ship of the Federation. An Andorian design, the ship is designed to move quickly to trouble spots and fight. The weaponry is not as formidable as it first appears, however. The 8 phasers are not individually as powerful as those on the heavy cruiser. The difference is in total firepower. The ship is designed solely for fighting. There are no research facilities.

The main hull contains weaponry system controls, quarters, mess, recreation facilities, etc. The 5m high small area atop the ship contains the bridge and AC/water recycling equipment. The connector contains additional crew facilities, the engineering hull section contains warp controls, hydroponics, waste recycling, etc. The rear hull area contains the impulse engine room, additional weaponry controls, cargo area, and shuttle bays. The LOKNAR class carries 2 shuttles, each with its own landing and storage facilities.

Incidentally, some Vulcans do serve on LOKNAR class ships, but there are no ships in this class crewed predominately by Vulcans.

"RANGER" CLASS SCOUT

MOBILITY DATA

WARP ENGINES	(2)
TYPE	FWB
MANEUVER POINTS RATIO	2/1
POWER POINTS	14 each
STRESS CHARTS	M/O

IMPULSE ENGINE

TYPE	FIB
POWER UNITS	4

MAX SAFE CRUISING SPEED	W8
-------------------------	----

EMERGENCY SPEED	W9
-----------------	----

ARMAMENTS

TYPE	2 individual FH-2 phasers
LOCATION	Upper main hull, P/S (Fire fwd and P/S)

FIRING CHART	3
POWER RANGES	0 - 3

TYPE	2 FP-3 photon torpedo tubes
LOCATION	Center hull, one fwd, one aft
FIRING CHART	18
POWER TO ARM	1 point each

DEFLECTORS

TYPE	FSF
POWER RATIO	1/2
SHIELD POWER	10

DAMAGE CHARTS	C
---------------	---

SUPERSTRUCTURE	10
----------------	----

OTHER FEATURES

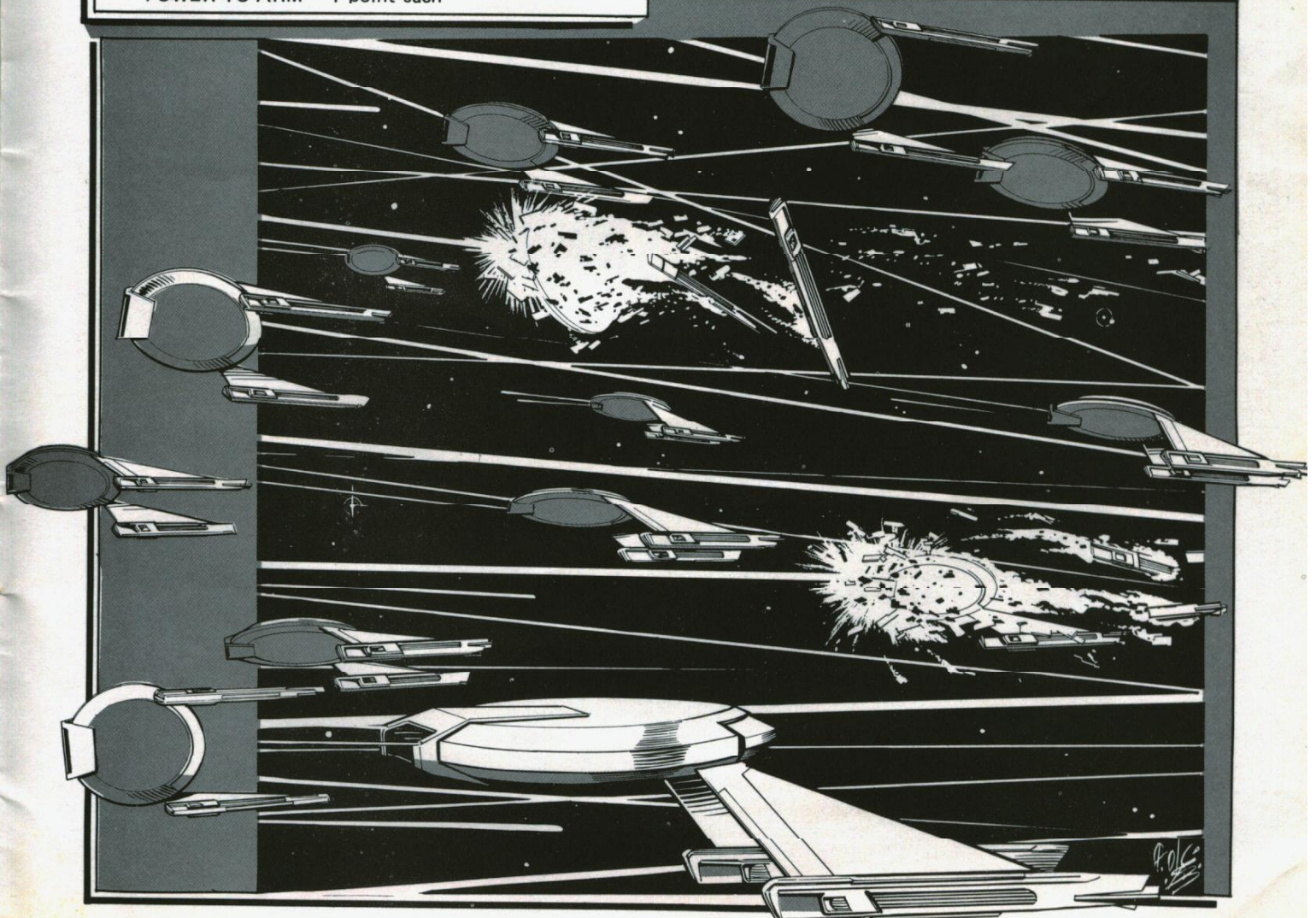
TRANSPORTERS	2 6-person standard use 1 12-person emergency
--------------	--

SHUTTLECRAFT	2 standard
--------------	------------

CREW REQUIREMENTS	73
-------------------	----

PASSENGER FACILITIES	None
----------------------	------

The RANGER class scout is a small vessel with extremely cramped crew quarters for a Federation vessel. It is used in areas requiring small, lightly armed vessels. The RANGER is popular as a convoy escort in hazardous areas. The RANGER class usually work in groups of 2 or 3 ships for mutual protection. Note the aft firing torpedo in addition to the one forward.



ENTRY
SCAN
ESC
CTRL
RDT
RFSET
INDEX
IUT
PCA
MIN
SGD

FEDERATION

Red indicator lights
Yellow indicator lights
Green indicator lights

0 9X
00 9X-
000 9X-
0000 9X--

Q W E R T Y U I O P & ? ! :
A S D F G H J K L Z B \$ % &#
X C V B N M Æ Œ Ø Ç % () ///
SET LOCK ON OFF
1 2
3 4
5 6
7 8
9 0

OVERFIELD

SHIP DATA

Hull Numbers	72301 - 72465
Vessel Type	Freighter
Contractor	Antares Liners, Inc.
Cost	876.5 MCr
Metric Tonnage	145,000mt
Max Safe Crs Spd	W6
Emergency Speed	W8
Weaponry	None

DIMENSIONS

Length (Overall)	327.93m
Breadth (Overall)	195.91m
Height (Overall)	37.24m
Deck Ceiling Height	3.0m (avg)
Cargo Units	52,700

Five red indicator lights

ENTRY
SCAN
ESC
CTRL
RDT
RESET
INDEX
IUT
PCA
MIN
SGD

FEDERATION

Red indicator lights
Yellow indicator lights
Green indicator lights

0 9X
00 9X-
000 9X-
0000 9X--

Q W E R T Y U I O P & ? ! :
A S D F G H J K L Z B \$ %
X C V B N M Æ Œ Ø Ç % ()
SET LOCK ON OFF

LAWEYA

1 2
3 4
5 6
7 8
9 0

SHIP DATA

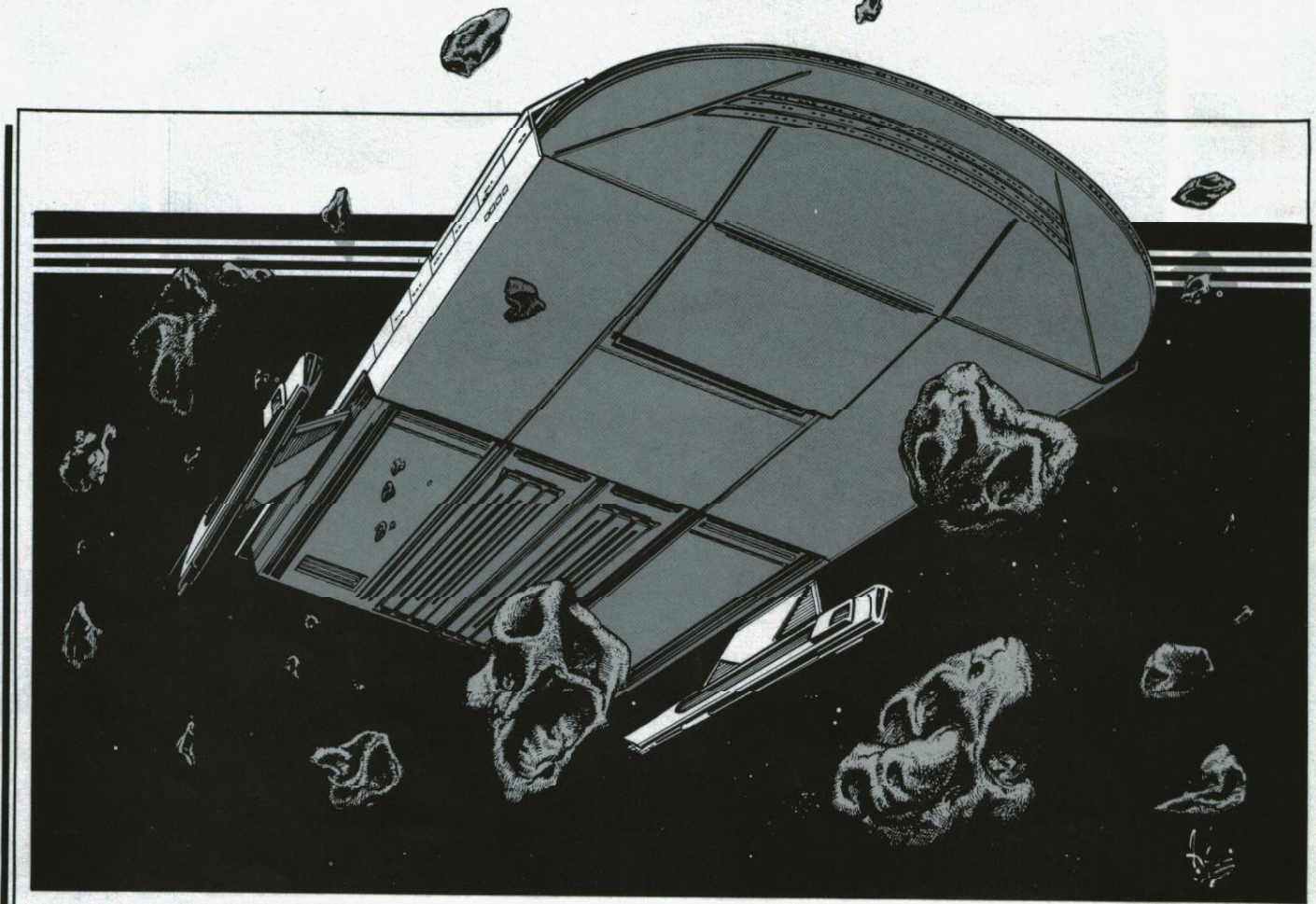
Hull Numbers	70926 71500
Vessel Type	Large Freighter
Contractor	Rakala Industries Inc.
Cost	778.0 MCr
Metric Tonnage	128,000mt
Max Safe Crs Speed	W6
Emergency Speed	W8
Weaponry	None

DIMENSIONS

Length (Overall)	245.85m
Breadth (Overall)	174.76m
Height (Overall)	44.85m
Deck Ceiling Height	3.0m (avg)
Cargo Units	25,500

Red indicator lights

— "OVERFIELD" CLASS FREIGHTER —



MOBILITY DATA

WARP ENGINES	(2)
TYPE	FWE
MANEUVER POINTS RATIO	4/1
POWER UNITS	8 each
STRESS CHARTS	G/K

IMPULSE ENGINE	
TYPE	FIC
POWER UNITS	1

MAX SAFE CRUISING SPEED	W6
-------------------------	----

EMERGENCY SPEED	W8
-----------------	----

ARMAMENTS None

DEFLECTORS	
TYPE	FSA
POWER RATIO	1/1
SHIELD POWER	6

DAMAGE CHARTS	C
---------------	---

SUPERSTRUCTURE	15
----------------	----

OTHER FEATURES

TRANSPORTERS	2 6-person standard use
	4 small cargo
	4 large cargo

SHUTTLECRAFT	1 passenger
	4 cargo

CREW REQUIREMENTS	86
-------------------	----

PASSENGER FACILITIES	8 staterooms accomodating up to 16 persons
----------------------	--

The OVERFIELD class freighter has many interior configurations. Its most common is as a normal cargo vessel, transporting containers. The vessel does have variants for carrying liquids and bulk items (such as grain). In these modes, the ship is fitted with special locks topside for the movement of the materials. The huge cargo area has specially designed movable partitions allowing for many interior configurations. The vessel can be pressed into service as a troop transport, albeit with not very comfortable living conditions. The observer will note the four airlocks on both sides of the ship on the lower surface of the forward hull. These are for docking cargo shuttles. Large elevators and conveyors move material to these inside the vessel, allowing for two centralized customs and paperwork stations.

"LAWEYA" CLASS FREIGHTER

DIMENSIONS

OVERALL LENGTH	245.84m
OVERALL WIDTH	174.76m
OVERALL HEIGHT	44.85m
DECK CEILING HEIGHT	(avg) 3.00m
CARGO UNITS	25,500

METRIC TONNAGE 128,000mtt

MOBILITY DATA

WARP ENGINES	(2)
TYPE	FWE
MANEUVER POINTS RATIO	4/1
POWER UNITS	8 each
STRESS CHARTS	G/K

IMPULSE ENGINE

TYPE	FIC
POWER UNITS	1

MAX SAFE CRUISING SPEED W6

EMERGENCY SPEED W8

ARMAMENTS None

DEFLECTORS

TYPE	FSA
POWER RATIO	1/1
SHIELD POINTS	6

DAMAGE CHARTS B

SUPERSTRUCTURE 14

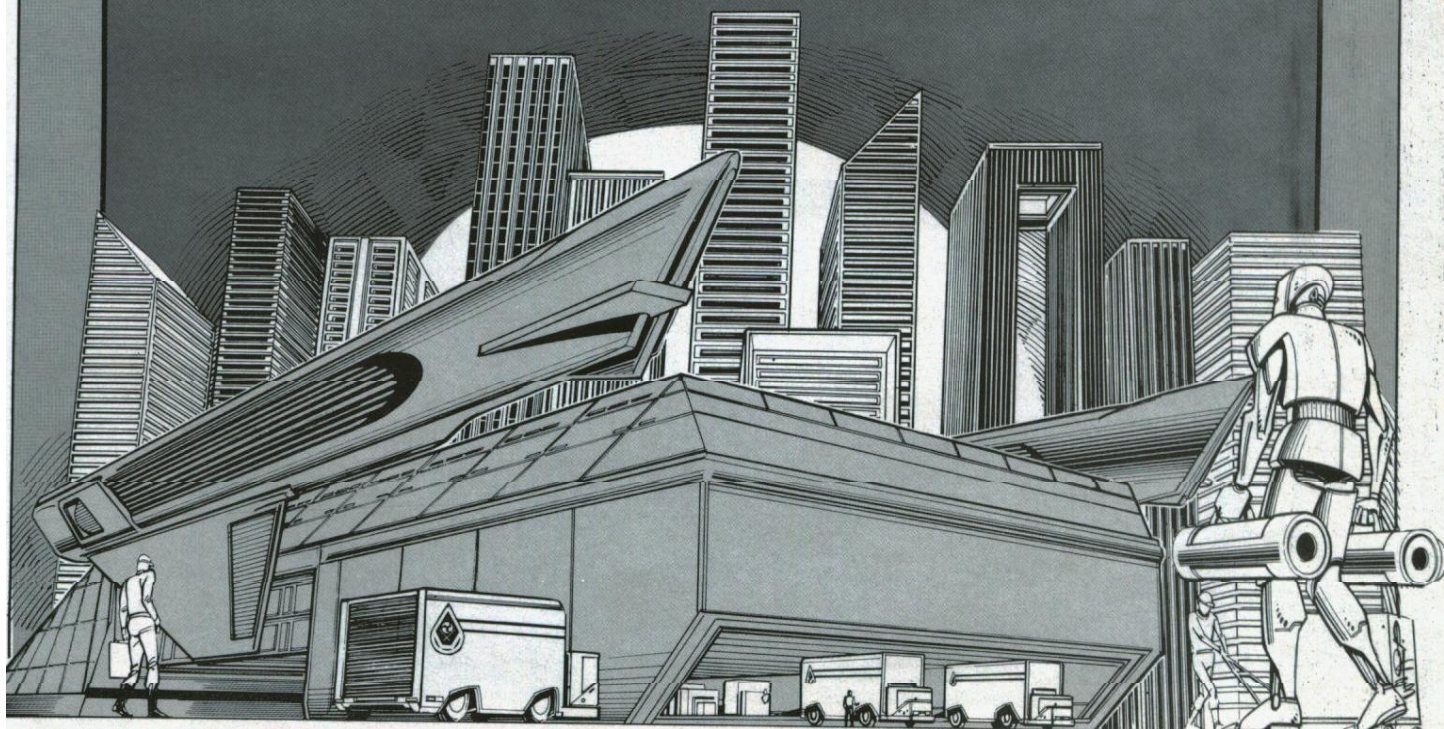
OTHER FEATURES

TRANSPORTERS	2 6-person standard use
	2 small cargo
	4 large cargo

CREW REQUIREMENTS 65 (Below normal minimum cargo vessels do not require large crews)

PASSENGER FACILITIES None

The LAWEYA class freighter is a cargo vessel. It has no provisions for passengers, although it can and has been used as a transport for Federation Marines in emergencies. It is one of the largest cargo vessels in the Federation. Although a Starfleet design (Andorian to be exact), the vessel is available commercially. Few corporations, let alone individuals, can afford to maintain the large ship once they have purchased it. In commercial use, the vessel is normally found on "milk runs" on which it can carry a guaranteed sold cargo in order to at least break even.



ENTRY
SCAN

FSC
CTRL

RDT
RESET
INDEX
IUT
PCA

MIN
SGD

FEDERATION

Red indicator light

Yellow indicator light

Green indicator light

Green indicator light

0 9X

00 9X-

000 9X-

0000 9X--

Q W E R T Y U I O P & ? ! :
 A S D F G H J K L Z B S e £
 X C V B N M Æ Œ Ø C % () ///
 SET LOCK ON OFF

ENTERPRISE
(ex-Constitution Class)



1 2
3 4
5 6
7 8
9 0

SHIP DATA

Hull Numbers	1701 - 1750
Vessel Type	Heavy Cruiser
Contractor	Federation Naval Yards
Cost	1695.5 MCr
Metric Tonnage	170,000mt
Max Safe Crs Spd	W8
Emergency Speed	W10
Weaponry	6 FH-11 phasers, (3 banks of 2) 2 FP-4 photon torpedoes

DIMENSIONS

Length (Overall)	301.70m
Breadth (Overall)	130.65m
Height (Overall)	74.05m
Deck Ceiling Height	3.0m (avg)
Cargo Units	450

Five red indicator lights in a row.

ENTRY
SCAN
ESC
CTRL
RDT
RESET
INDEX
IUT
PCA
MIN
SGD

FEDERATION

Red indicator lights
Yellow indicator lights
Green indicator lights

0 9X
00 9X-
000 9X-
0000 9X--

Q W E R T Y U I O P & ? ! :
A S D F G H J K L Z B S e e
X C V B N M A E O C % () ///
SET LOCK ON OFF
1 2
3 4
5 6
7 8
9 0

RELIANT (ex-Anton Class)

SHIP DATA

Hull Numbers	26226 - 26300
Vessel Type	Research Cruiser
Contractor	Federation Naval Yards
Cost	1338.0 MCr
Metric Tonnage	162,000mt
Max Safe Cru Spd	W6
Emergency Speed	W8
Weaponry	4 FH-10 phasers (2 banks of 2) 2 FP-4 photon torpedoes

DIMENSIONS

Length (Overall)	232.73m
Breadth (Overall)	140.06m
Height (Overall)	63.47m
Deck Ceiling Height	3.0m (avg)
Cargo Units	400

Red indicator lights

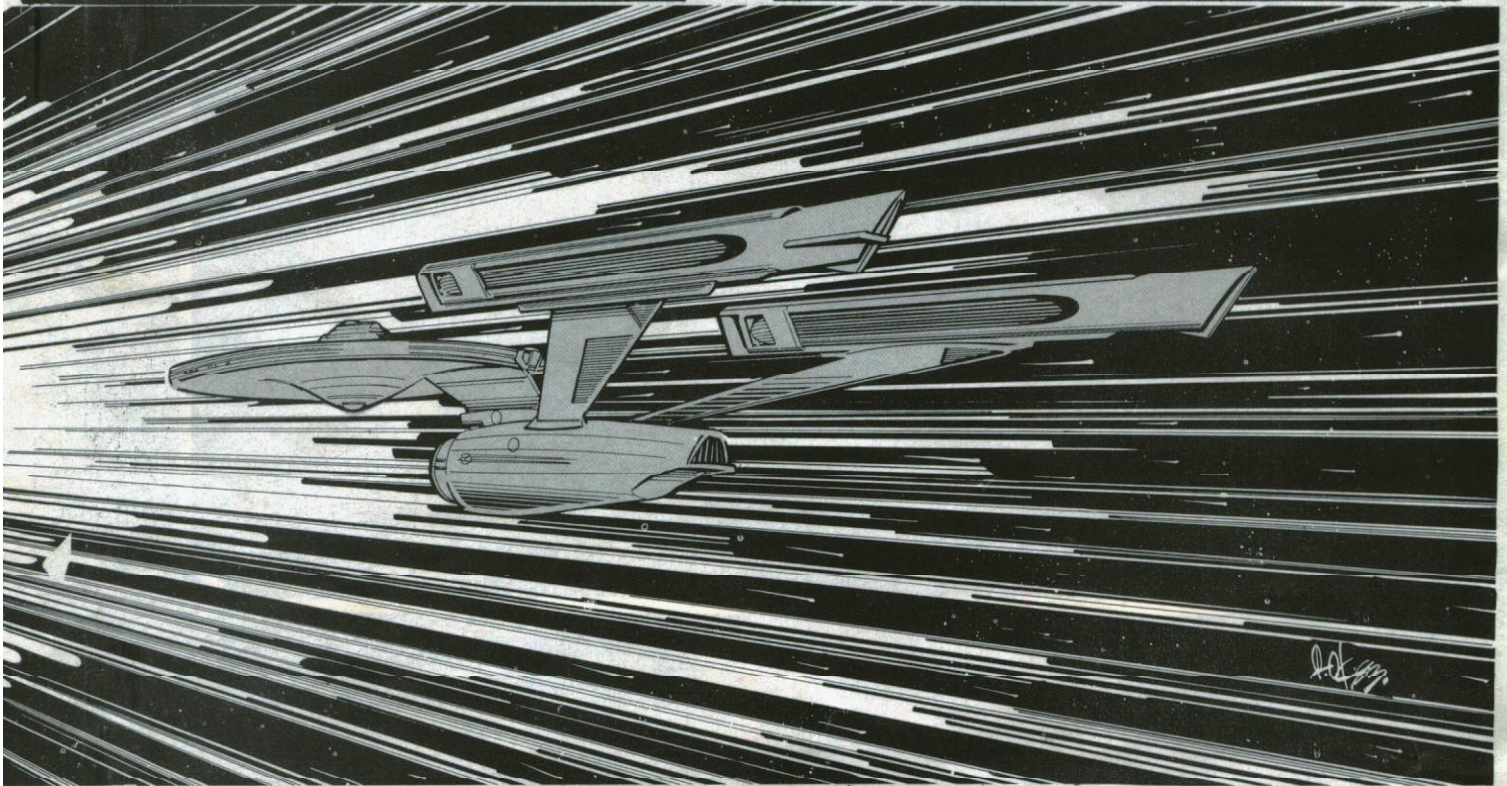
"ENTERPRISE" CLASS HEAVY CRUISER

MOBILITY DATA

WARP ENGINES	(2)
TYPE	FWG
MANEUVER POINTS RATIO	4/1
POWER UNITS	26 each
STRESS CHARTS	D/F
IMPULSE ENGINE	
TYPE	FIE
POWER UNITS	8
MAX SAFE CRUISING SPEED	W8
EMERGENCY SPEED	W10

ARMAMENTS

TYPE	6 FH-11 phasers, in banks of two
LOCATION	Upper main hull (P/S) (fire fwd and P/S) and lower main hull (fwd cntr) (fires fwd)
FIRING CHART	20
POWER RANGES	0-10
TYPE	2 FP-4 photon torpedoes
LOCATION	In weapons pod in dorsal hull connector. Fire forward.
FIRING CHART	19
POWER TO ARM	1



DEFLECTORS

TYPE	FSP
POWER RATIO	1/4
SHIELD POWER	16

DAMAGE CHARTS

C

SUPERSTRUCTURE

26

SHUTTLECRAFT

4 (varies)

CREW REQUIREMENTS

412

OTHER FEATURES

TRANSPORTERS	4 6-person standard use 4 22-person emergency 2 cargo
--------------	---

PASSENGER FACILITIES

(varies)

The ENTERPRISE class heavy cruiser is the old CONSTITUTION class heavy cruiser redesigned. After the old Enterprise returned from its 5 year mission it received such wide acclaim that when the time came for refitting it with new engines and equipment it was decided by popular decision that the ENTERPRISE (the first to be refit) would be the new class name. It will be noted that the weaponry is more powerful than it was on the old class. The shields are not any stronger to any given side, but due to power channeling redesign, more shielding power is available to all sides of the ship. It will also be noted that the new class is lighter than the old even though the superstructure is stronger. This is due primarily to the new engines being lighter than the old.

The dorsal weapons pod is the most noticeable physical change (except for the engines). This pod contains the photon torpedo facilities. The vessel is also equipped with docking facilities to handle the newer long range shuttles and repair pods. Other new ENTERPRISE class vessels are being built to replace those CONSTITUTION class ships destroyed or lost. These vessels will carry the same names as their predecessors.

"RELIANT" CLASS RESEARCH CRUISER

MOBILITY DATA

WARP ENGINES (2)
 TYPE FWF
 MANEUVER POINTS RATIO 4/1
 POWER UNITS 20 (ea. engine)

STRESS CHARTS G/L
 IMPULSE ENGINE
 TYPE FIE
 POWER UNITS 8

MAX SAFE CRUISING SPEED W6

EMERGENCY SPEED W8

DAMAGE CHARTS C

SUPERSTRUCTURE 22

OTHER FEATURES

TRANSPORTERS 4 6-person standard use
 3 22-person emergency
 2 cargo

SHUTTLECRAFT 4

CREW REQUIREMENTS 336

PASSENGER FACILITIES Will accomodate up to 75 civilian research personnel.

ARMAMENTS

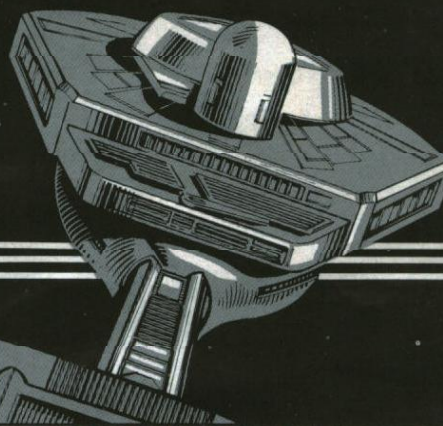
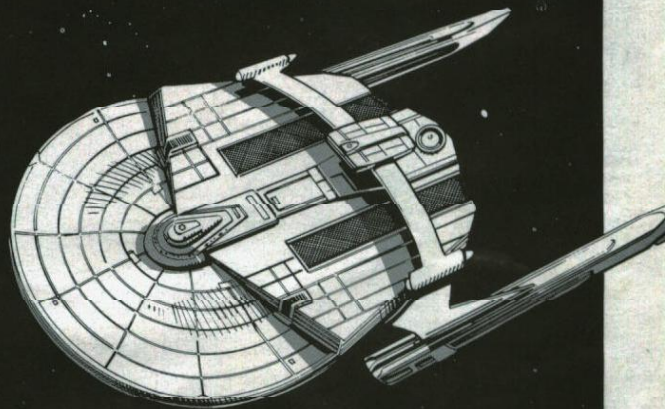
TYPE 4 FH-10 phasers (2 banks of 2)
 LOCATION Tips of "Roll Bar" (Fire fwd and P/S)

FIRING CHART 12
 POWER RANGES 0 - 7

TYPE 2 FP-4 photon torpedoes
 LOCATION Forward and aft - weapons pod in center of "Roll Bar"

FIRING CHART 19
 POWER TO ARM 1 point

DEFLECTORS
 TYPE FSL
 POWER RATIO 1/3
 SHIELD POWER 14



Handwritten signature

The RELIANT class is a remake of the old ANTON class cruiser. The RELIANT class was one of the first vessel classes to be refit with the new style engines. One interesting note is that the engines on the RELIANT are the old CONSTITUTION class engines with the newer style outer nacelle. The ANTON was equipped with phasers (3 banks of 2) as the CONSTITUTION class was. With the refit, however, the main hull phasers were dismantled in some of the vessels and left intact but unpowered in others.

The RELIANT class is primarily a research support cruiser, less heavily armed than ships like the ENTERPRISE. The vessels are used in areas where hostiles or unknowns may be encountered but the research being performed does not warrant the use of larger vessels. The class is equipped with larger research facilities than the ENTERPRISE, however, and has large quarters for civilian research personnel.

NOTE: The class vessel RELIANT itself was destroyed in a battle with the ENTERPRISE during the infamous "Wrath of Khan" incident.

ENTRY
SCAN
ESC
CTRL
RDT
RESET
INDEX
IUT
PCA
MIN
SGD

FEDERATION

Red indicator lights
Yellow indicator lights
Green indicator lights

0 9X
00 9X-
000 9X-
0000 9X--

Q W E R T Y U I O P & ? ! :
A S D F G H J K L Z B S e &
X C V B N M Æ Œ Ø Ç % () ///
SET LOCK ON OFF
1 2
3 4
5 6
7 8
9 0

RELIANT (ex-Anton Class)

Ship Recognition Manual: The Federation contains 14 vessels of the United Federation of Planets. All currently available unclassified data for each ship is presented in this volume of the Ship Recognition Series along with all information necessary to add these vessels to your game. The study of the Ship Recognition Series is required at Starfleet Academy and has become a useful tool of all Starship commanders. This supplement includes ships such as the New Enterprise, Reliant, Larson and many more.

ISBN 0-425-06955-9

