

Iltharanos

## Suliban Cell Ship

Fighter; Commissioned 2151

### HULL DATA

Structure: 5 [21 space] [1 space remaining]

Size/Decks: 1/1

Length/Beam/Height: 3.25/3.25/3.5 meters

Complement: 1; 4 passengers

### TACTICAL DATA

Phase Cannons: PC-10a (x1/A) [-4 space]

Penetration: 2/1/0/0/0

Deflector Shields: PFF 1 (A) [-2 space]

Protection/Threshold: 12/1

### PROPULSION DATA

Impulse System: SBD (.6c) (B) [-3 space]

Warp System: PB-4 (3/4/6) (B) [-6 space]

### OPERATIONAL DATA

Atmosphere Capable: Yes [0 space]

Cargo Units: 1 [0 space]

Cloaking Device: Class 1 (Rating 16) [-1 space]

Life Support: Class 1 (B) [-1 space]

Operations System: Class 1 (B) [-1 space]

Sensor System: Class 2 (+2/+1/0/0/0/C) [-2 space]

Separation System: No [0 space]

Shuttlebay: No [0 space]

Shuttlecraft: None

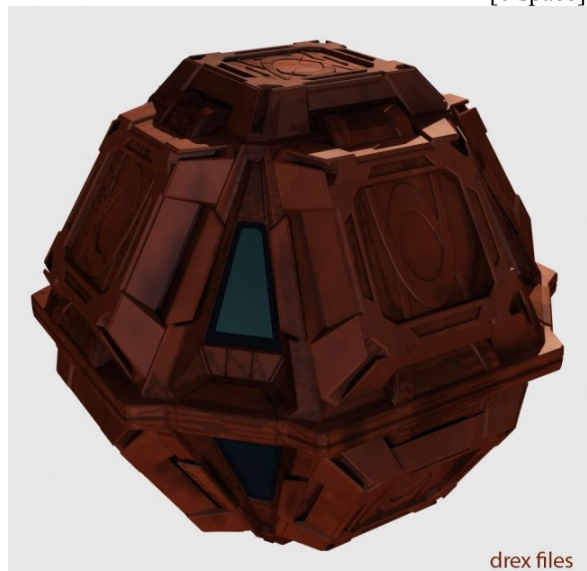
Tractor Beams: 1 f [0 space]

Transporters: None [0 space]

### MISCELLANEOUS DATA

Maneuver Modifiers: -2C, +3H, +1T

Traits: None [0 space]



Iltharanos

## BACKGROUND

The Suliban Cell Ship is quite advanced for its time period, and for good reason. The Suliban have benefitted greatly from their unseen benefactor from the future, for this mysterious figure has been sharing technology with the Suliban that would normally be unrealized for decades. The Suliban Cell Ship's shields, warp drive, and cloaking device are all decades beyond the Sulibans' technological capability, making this small ship much more formidable than its size would otherwise indicate. Given all of its technological superiority, the cell ship is still woefully outgunned by most capital ships of the mid 22<sup>nd</sup> century, a primary reason why the cell ship operates in large numbers.