

03-227  
MODE SELECT

04-927  
DISPLAY CONFIG

05-451  
LOAD FILE

07-756  
CALIBRATE

08-102  
SUBSYS SEL

09-483  
AUX MODE

10-936  
SECONDARY

11-672  
AUTO CONFIG

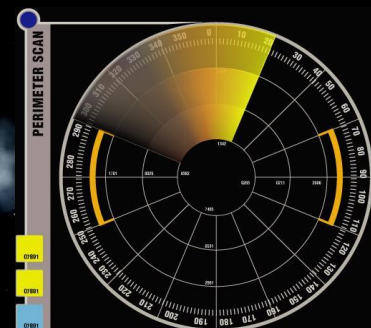
13-487  
NAV CON

14-175  
PHASE COMP

15-282  
COMM SYS

16-853  
COMMAND SYS

17-986  
SEN SCAN



## United Earth Intrepid-Class

Light Cruiser; Commissioned: 2152

### Hull Data

Structure: 25 [65 space][0 space remains]  
 Size/Decks: 5/5  
 Length/Height/Beam: 187/37/169 m  
 Complement: 47

### Tactical Data

Phase Cannons: PC-25 (x2/B) [-14]  
 Penetration: 3/2/2/0/0  
 Torpedo Launchers: FST Mk III (x3/B) [-9]  
 Penetration: 2/2/2/0/0  
 Hull Polarization: HPG Mk 3 (C) [-7]  
 Protection/Threshold: 11/1

### Propulsion Data

Impulse System: SBD (.6c) (B) [-3]  
 Warp System: WE-5 (3/4/5 OCU) (B) [-10]

### Operational Data

Atmosphere Capable: Yes [-2]  
 Cargo Units: 50 [0]  
 Life Support: Class 3 (D) [-5]  
 Operations System: Class 3 (D) [-5]  
 Sensor System: Class 2 (+2/+1/0/0/0/C) [-2]  
 Separation System: No [0]  
 Shuttlebay: 1 a [-2]  
 Shuttlecraft: 5 size worth  
 Grapplers: 2 fv [-1]  
 Transporters: 2 standard [0]

### Miscellaneous Data

Maneuver Modifiers: +2C, 0H, +2T  
 Traits: Hardened System (Hull Polarization) [-5]

03-227  
MODE SELECT

## Mission

The Intrepid-class is a designated light cruiser, its primary purpose to support the actions of cruiser designs such as the NX-class.



## Background

United Earth very quickly learned that the Vulcans were correct, humanity was not entirely prepared for the dangers of interstellar travel. One result of these hard lessons is the Intrepid-class design, a smaller and yet nearly as powerful starship as the NX-class, allowing Earth to more adequately defend itself with less of a strain on its shipbuilding resources.

04-927  
DISPLAY CONFIG

05-451  
LOAD FILE

## Features

The Intrepid-class features all the systems pioneered by the NX-class, with several newer and more powerful systems, such as its PC-25 phase cannons, which while it has fewer emplacements than the NX-class, gives the Intrepid nearly as much firepower.

Lessons learned from the NX-class Enterprise's encounters have led to a more durable hull polarization grid, able to take a significant beating before succumbing to failure.

07-756  
CALIBRATE

08-102  
SUBSYS SEL

09-483  
AUX MODE

10-936  
SECONDARY

11-672  
AUTO CONFIG

## Ships in Service

Name	Registry	Notes
Intrepid	N.V. 11	Under the command of Captain Carlos Ramirez, defended the <i>Enterprise NX-01</i> against an attacking Klingon D4 Bird-of-Prey.
Talwar	N.V. 21	Destroyed in the Battle of Cheron (2160).

13-487  
NAV CON

14-175  
PHASE COMP

## Appearances

Series  
ENT

Media  
T.V. "The Expanse"; T.V. "Twilight"; T.V. "Storm Front";  
Novel "Beneath the Raptor's Wing"; Novel "To Brave the Storm"

15-282  
COMM SYS

16-853  
COMMAND SYS

17-986  
SEN SCAN