

02 03 04 05 06 07 08 09 10 11 12 13 14 15 16 17

Bookie

Hime's Barber Shop

Manson Building

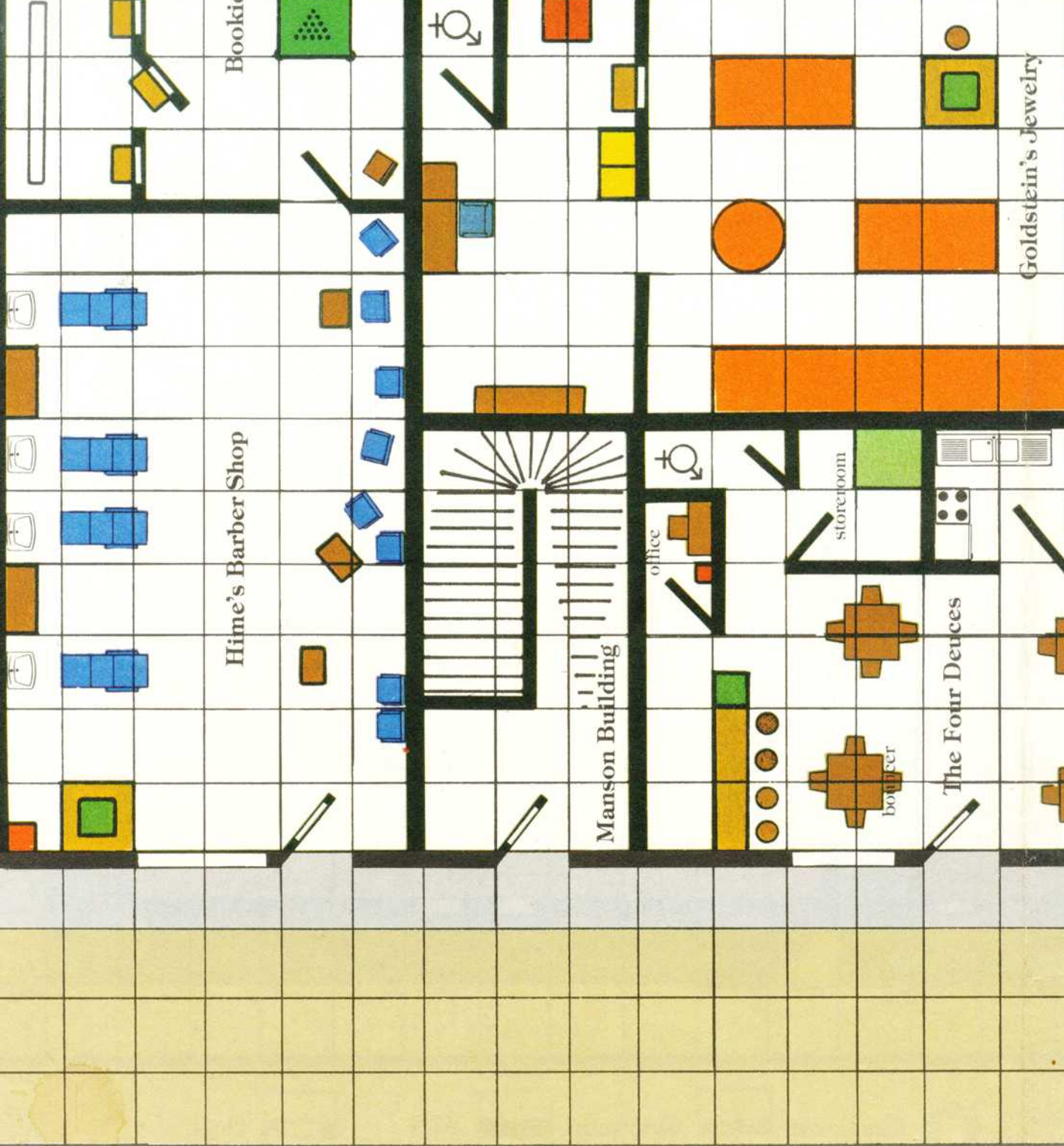
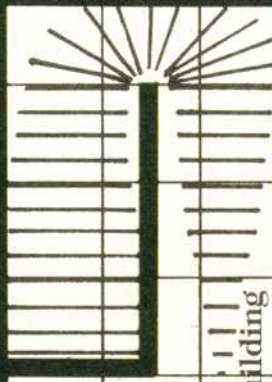
office

storeroom

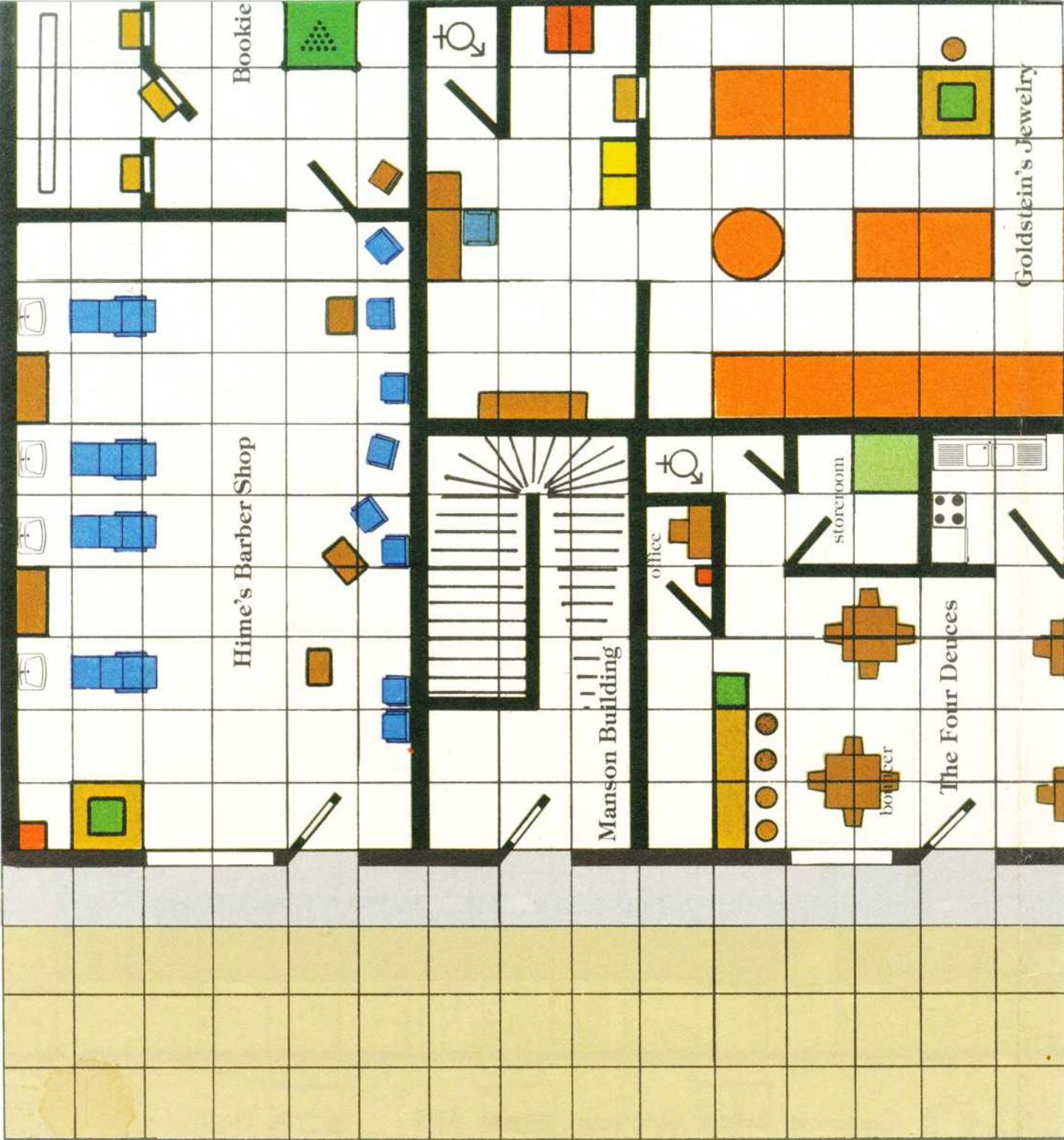
booth for

The Four Deuces

Goldstein's Jewelry



02 03 04 05 06 07 08 09 10 11 12 13 14 15 16 17



Bookie

Hime's Barber Shop

Manson Building

office

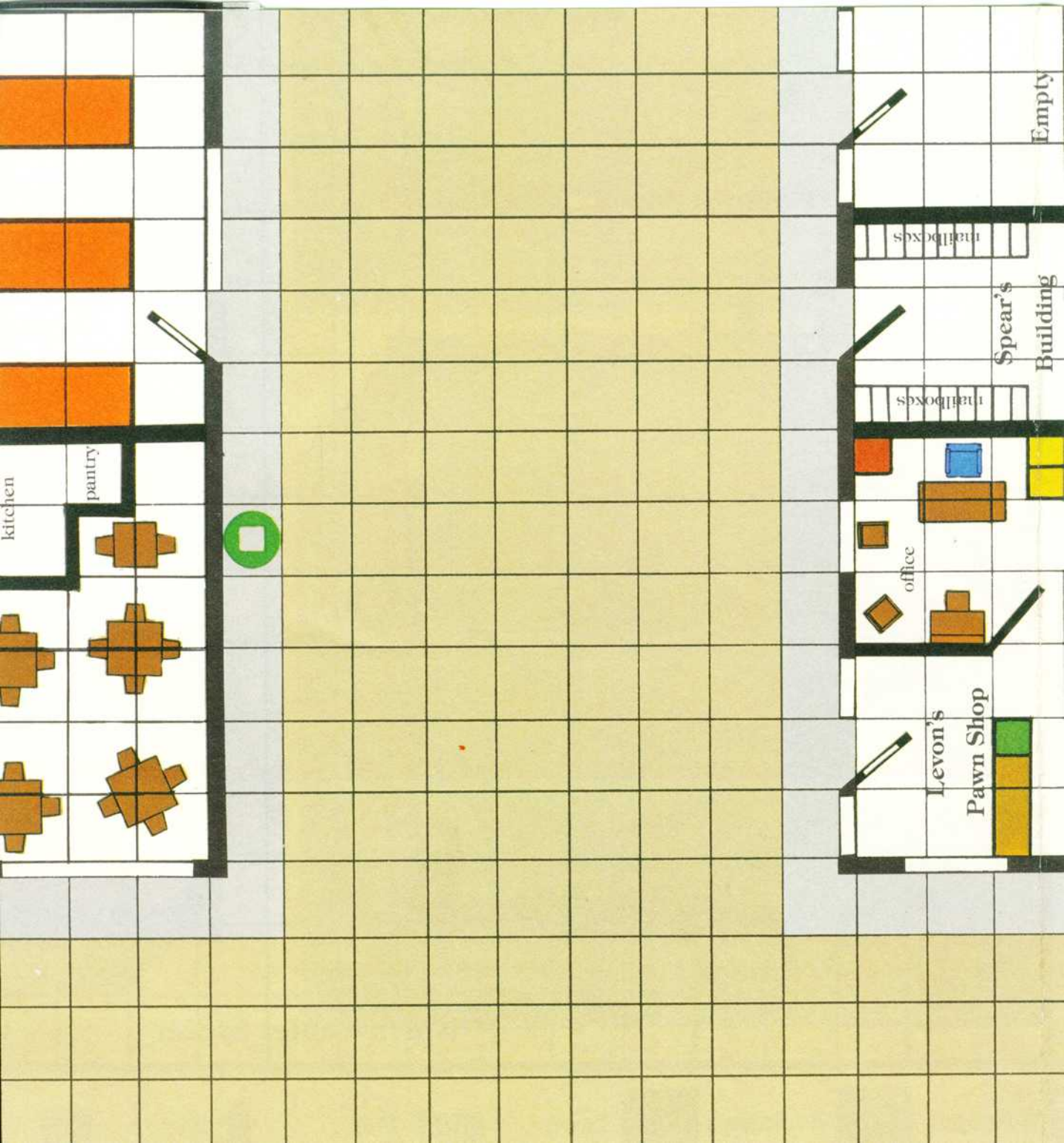
office

storeroom

bot

The Four Deuces

Goldstein's Jewelry



kitchen

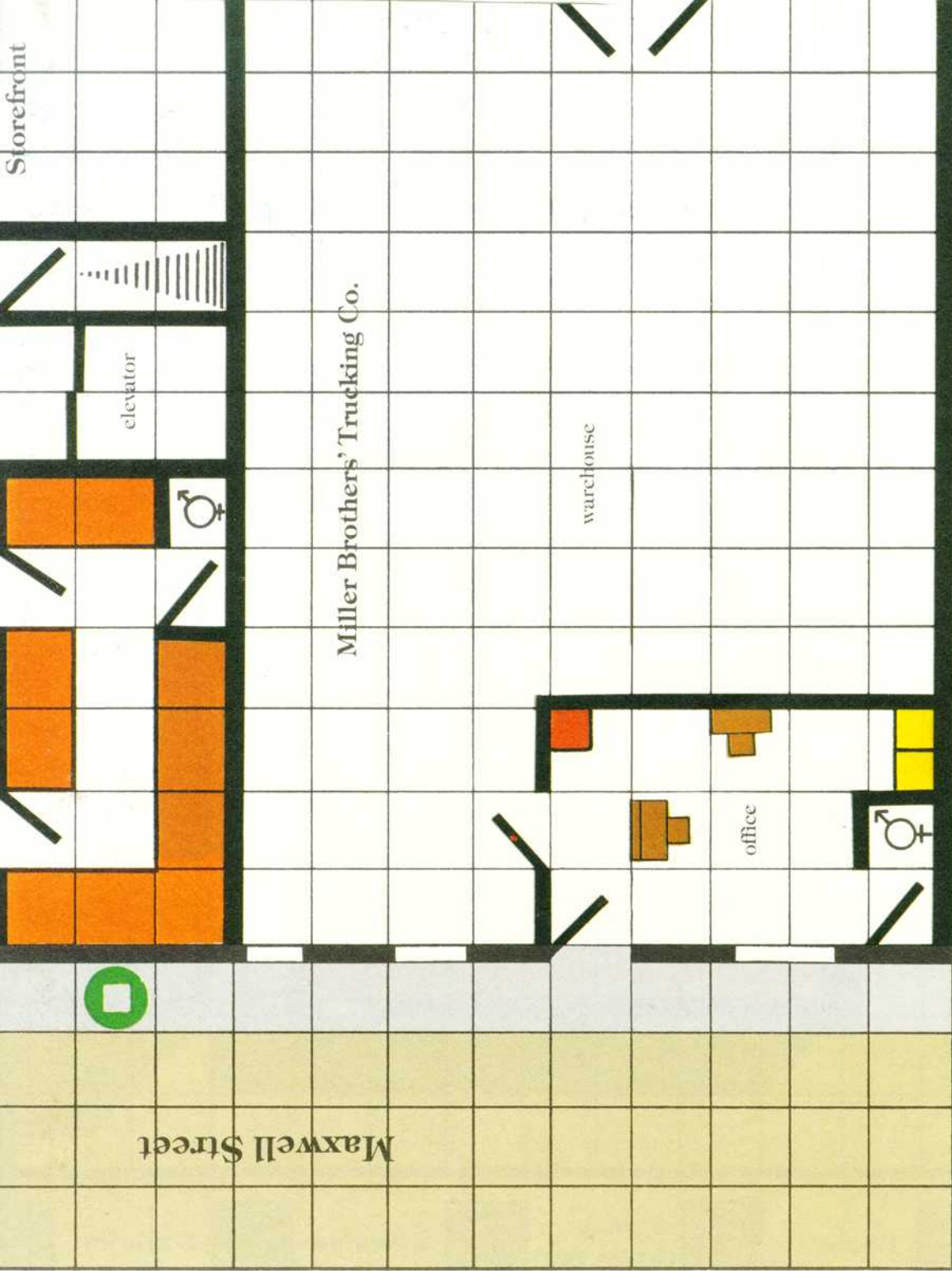
pantry

office

Levon's  
Pawn Shop

Spear's  
Building

Empty



Maxwell Street

Storefront

elevator

Miller Brothers' Trucking Co.

warehouse

office

Wall

Door

Stairs

Window

Fire Escalator

18 19 20 21 22 23 24 25 26 27 28 29 30 31 32 33 34 35

# Block Map (#1)

1 square = 5 feet

lumber storage

office

Joint

office

storeroom

Little Angie's  
(speakeasy)

bounce

slot  
machine

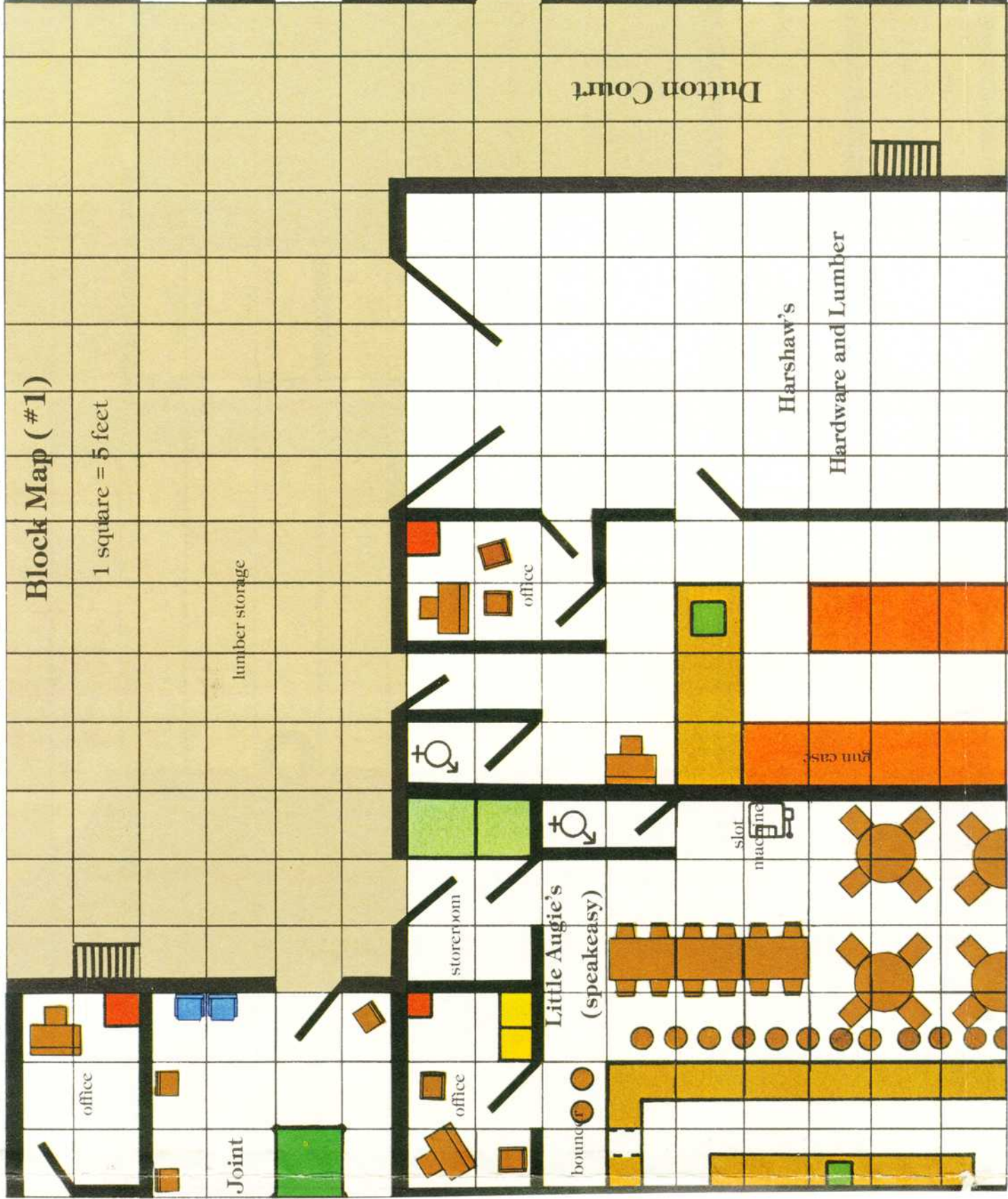
gun case

office

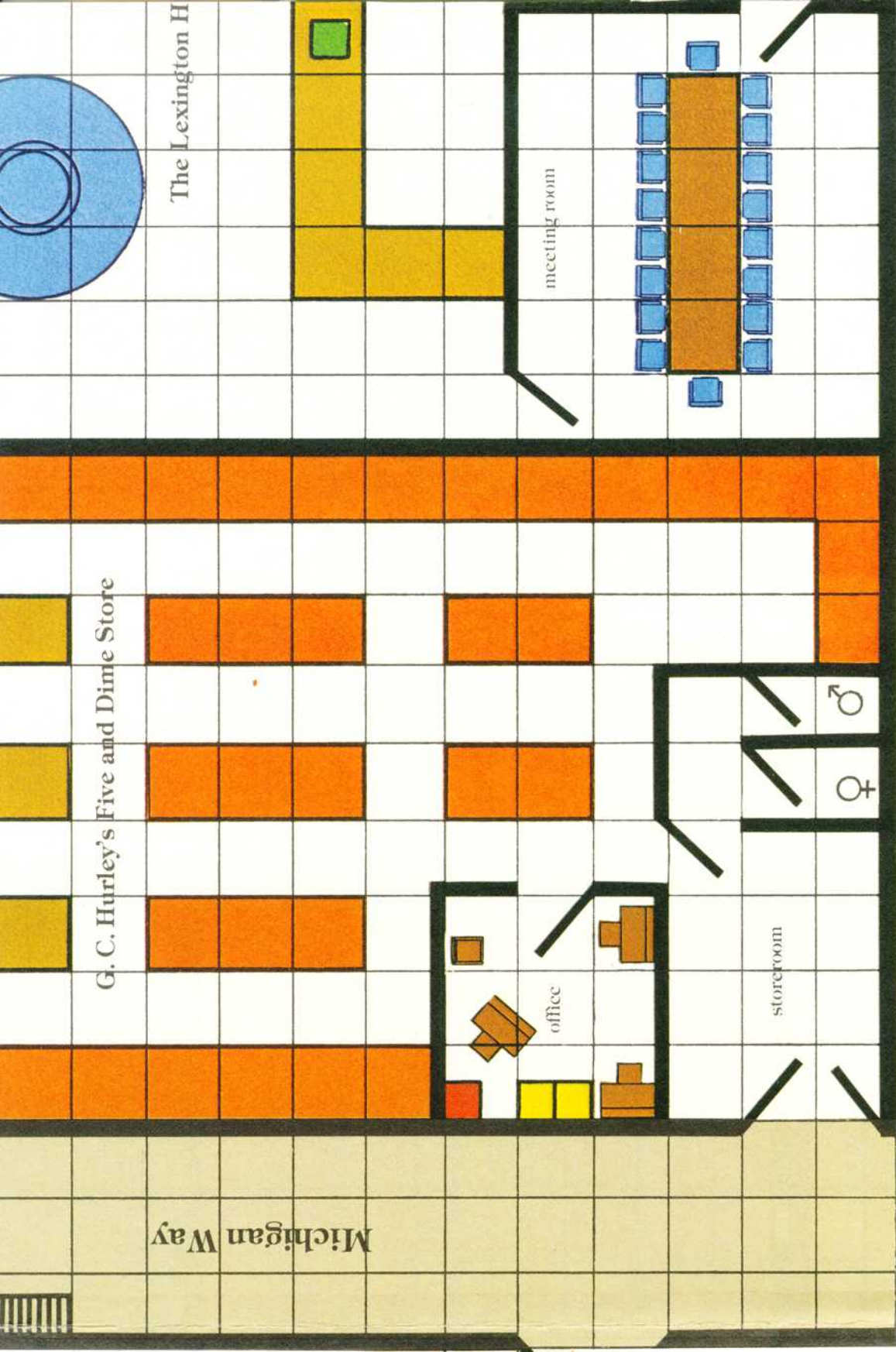
Harshaw's



Hardware and Lumber

Dutton Court







-  Wood Furniture
-  Plush Furniture
-  Bar
-  Cooler
-  Safe
-  Cash Regis

36 37 38 39 40 41 42 43 44 45 46 47 48 49 50 51 52

safe depo

safe depo

loan office

elevator

receptionist

president's office

bookkeeping

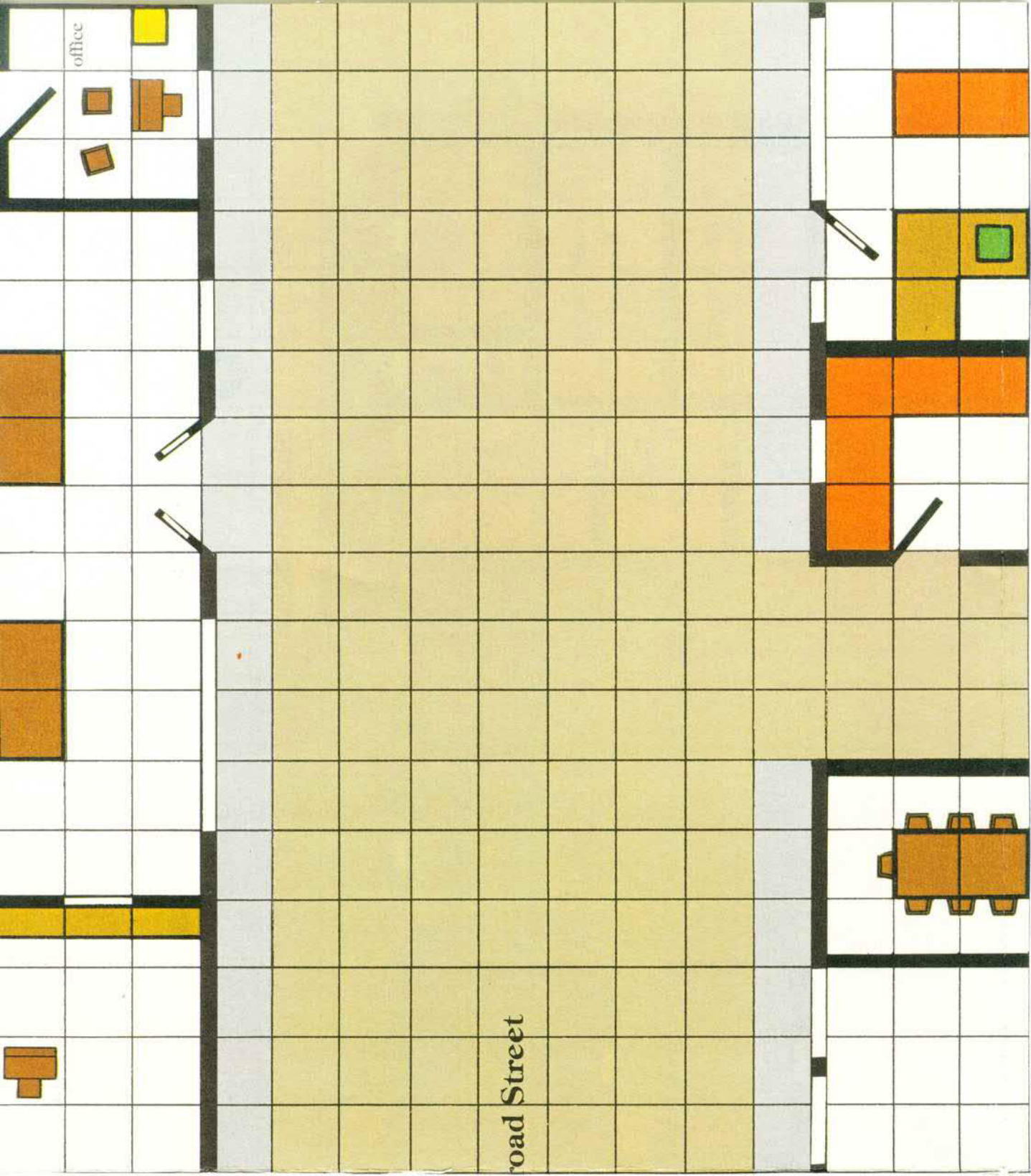
clerks

teller windows

First National Bank of Lakefront City

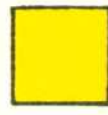
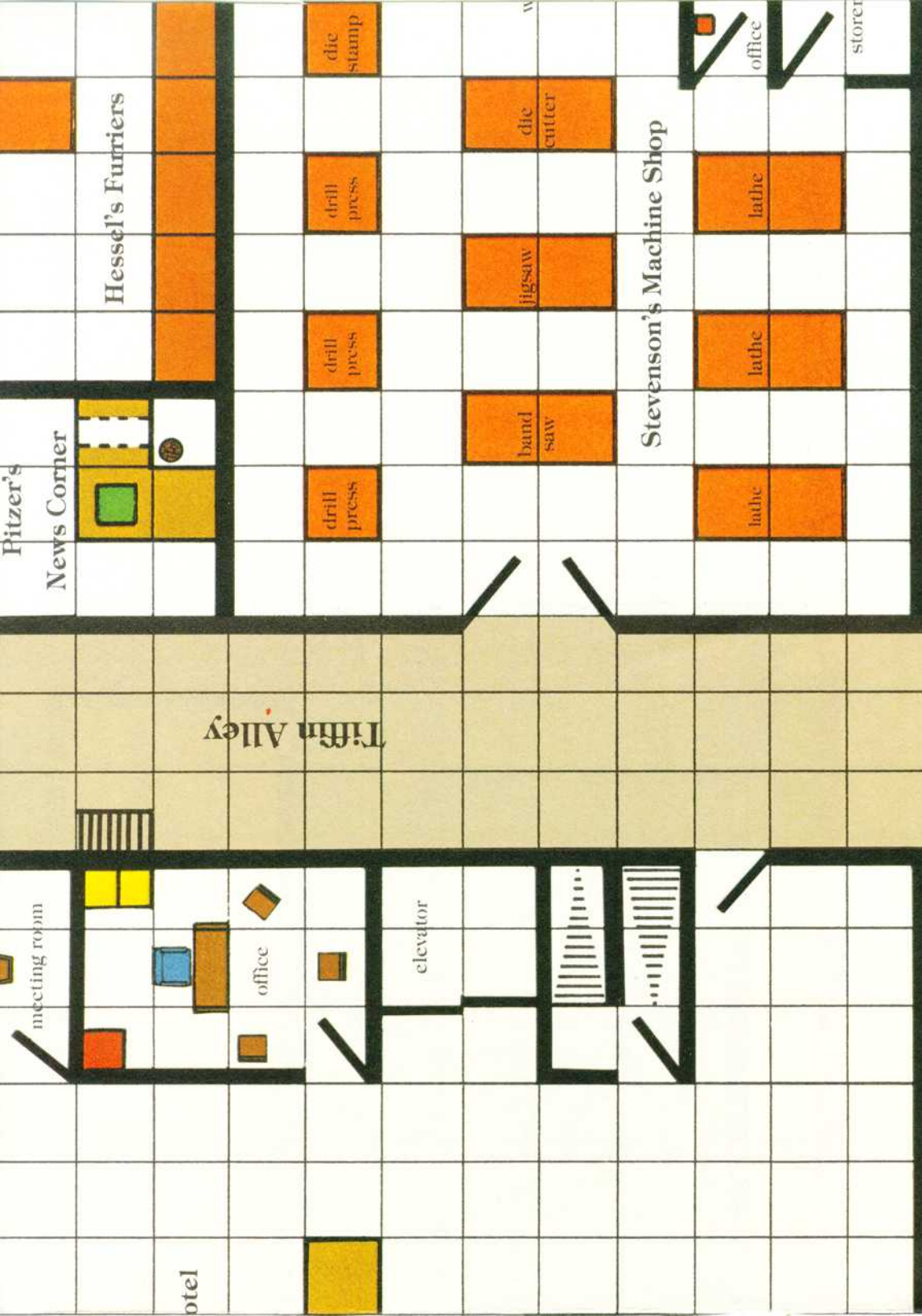






office

oad Street



File Cabinet



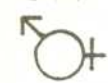
Shelf or Work Area



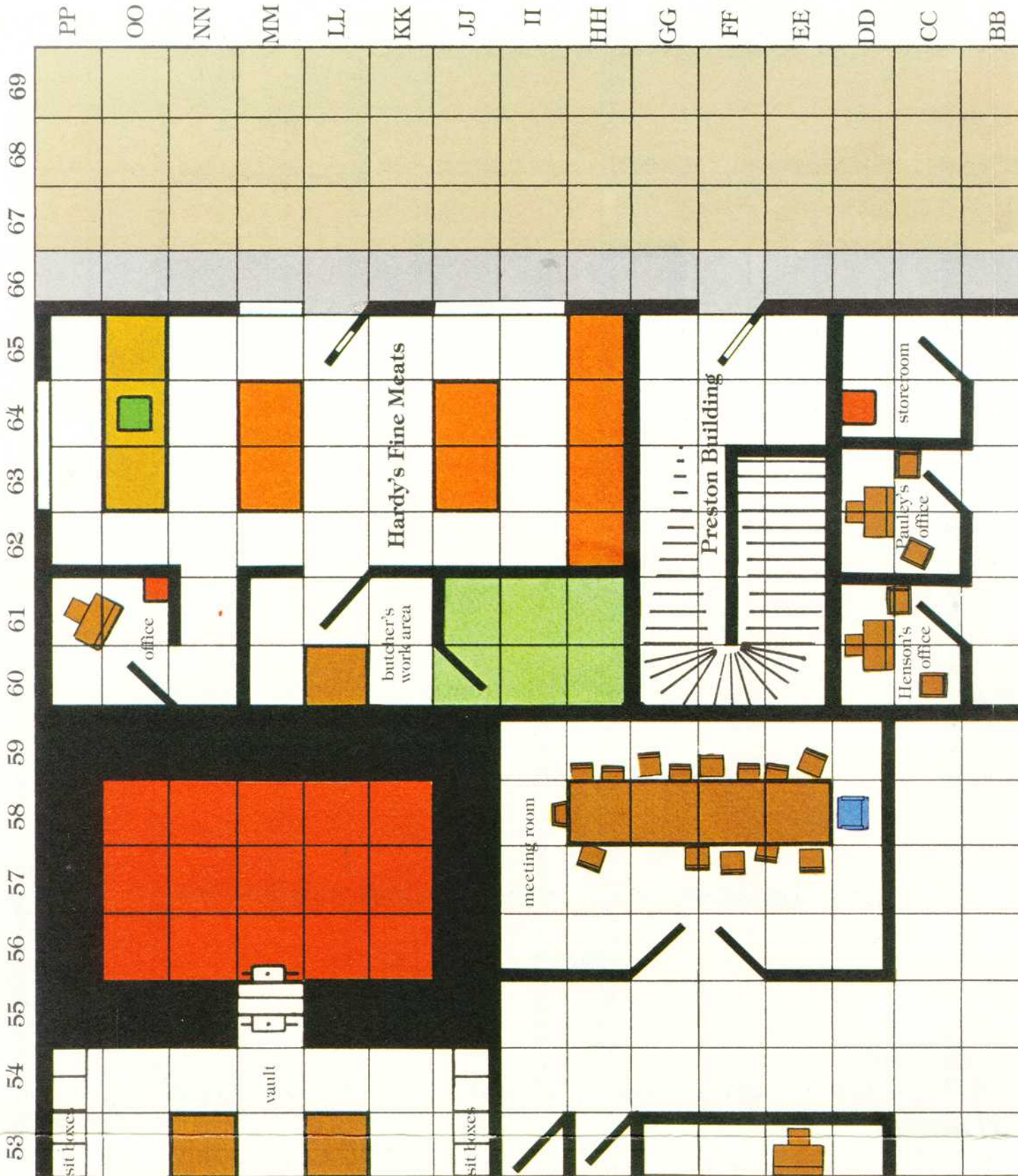
Men's Restroom



Women's Restroom



Common Restroom



AA Z Y X W V U T S R Q P O N M

office

vice president's office

Henson & Pauley Builders

This section of the floor plan contains several offices and a building company. At the top left, there is an office with a desk, chair, and a yellow square. Below it is the vice president's office, which includes a desk, two blue chairs, and a yellow square. To the right of these is the Henson & Pauley Builders office, featuring a desk, chair, and a yellow square. Further right, there are two more desks with chairs and a yellow square. The area is bounded by a thick black line.

Fanucci's

Velma's Restaurant

This section of the floor plan contains two restaurants. At the top right is Fanucci's, which has a desk, chair, and a yellow square. Below it is Velma's Restaurant, featuring a desk, chair, and a yellow square. The area is bounded by a thick black line.



L K J I H G F E D C B A

Canal Street

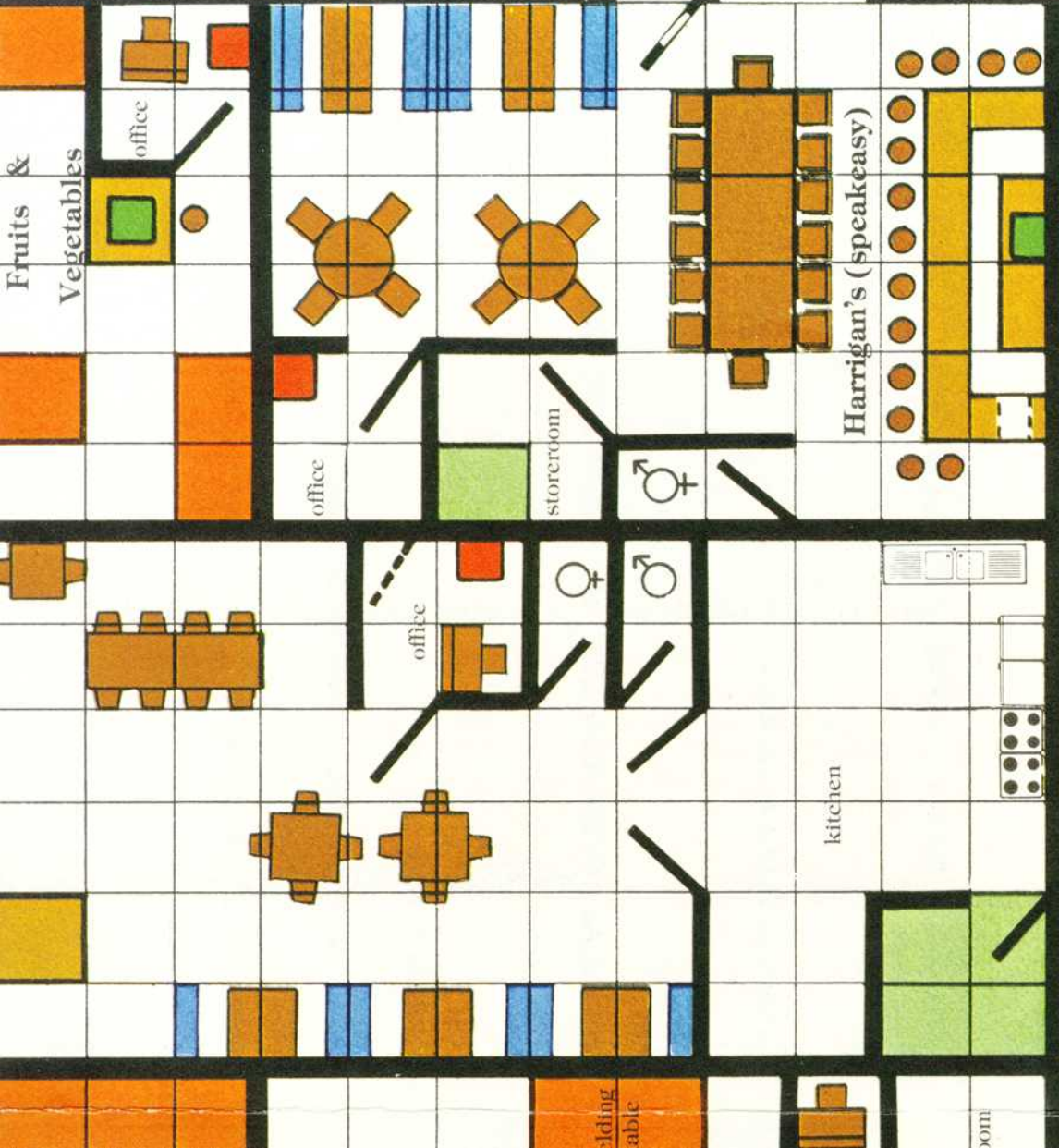
444 '82






Fruits & Vegetables

Harrigan's (speakeasy)

storeroom

kitchen



-  Sidewalk
-  Police Call Box
-  Fire Hydrant
-  Lamppost
-  Service Window