

Voitures – Année 1939

BUICK:



Buick 1939 Special 39-41
Fordor Touring Sedan

Prix: 965 \$
Capacité: 5 places



Buick 1939 Special 39-46C
Convertible Coupé

Prix: 1080 \$
Capacité: 4 places



Buick 1939 Century 39-61C
Sport Phaeton

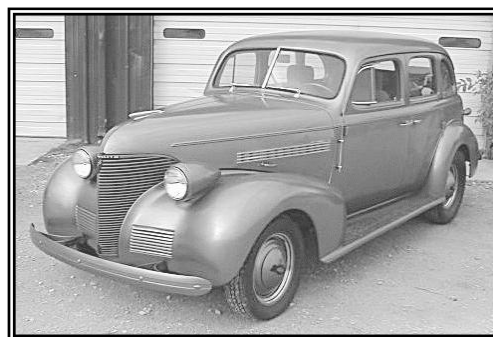
Prix: 1715 \$
Capacité: 5 places

CHEVROLET:



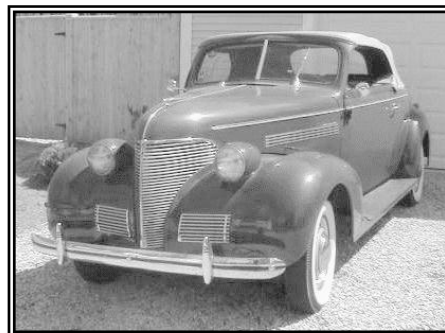
Chevrolet 1939 Tudor Sedan

Prix: 720 \$
Capacité: 5 places



Chevrolet 1939 Fordor Sedan

Prix: 745 \$
Capacité: 5 places



Chevrolet 1939 Convertible Coupé

Prix: 690 \$
Capacité: 2 places



Chevrolet 1939 DeLuxe Coupé

Prix: 685 \$
Capacité: 2 places

Voitures – Année 1939

FORD:



Ford 1939 V8 Tudor Sedan

Prix: 680 \$

Capacité: 5 places



Ford 1939 V8 Fordor Sedan

Prix: 730 \$

Capacité: 5 places



Ford 1939 V8 DeLuxe Coupé

Prix: 700 \$

Capacité: 2 places

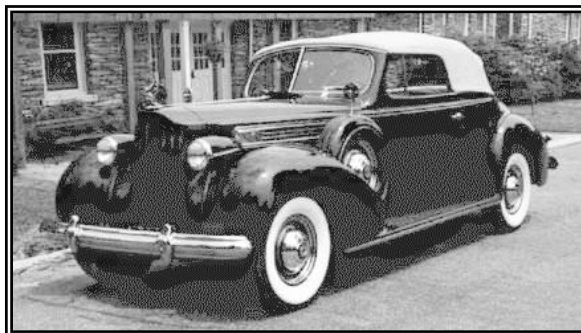


Ford 1939 V8 Convertible Coupé

Prix: 790 \$

Capacité: 2 places (+ 2 en malle)

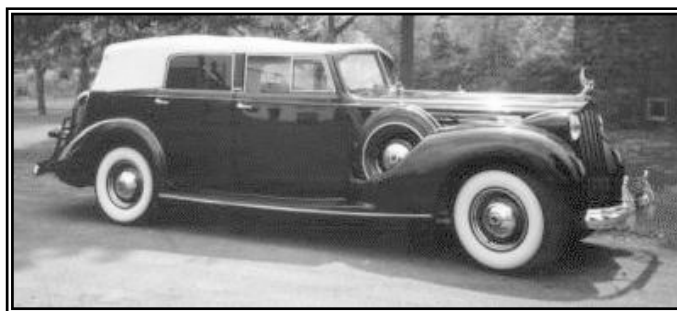
PACKARD:



**Packard 1939 Super Eight
Convertible Coupé**

Prix: 1875 \$

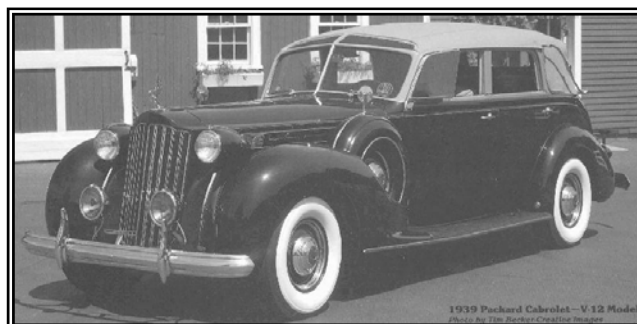
Capacité: 2 places (+ 2 en malle)



**Packard 1939 Twelve
Convertible Sedan**

Prix: 5395 \$

Capacité: 5 places



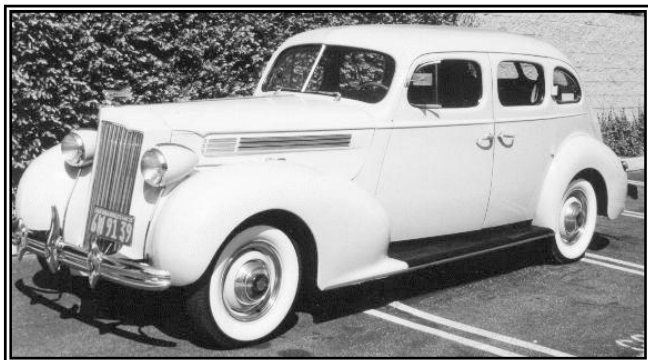
**Packard 1939 Twelve Brunn
Touring Cabriolet**

Prix: 8355 \$

Capacité: 7 places

Voitures – Année 1939

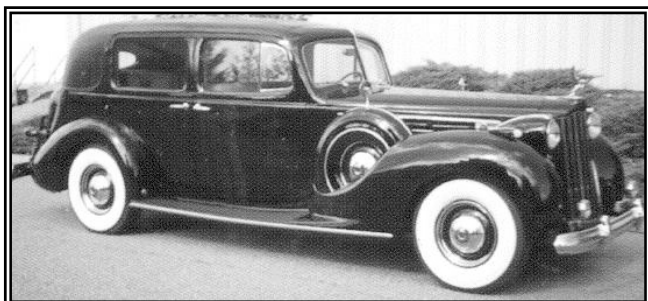
PLYMOUTH:



Packard 1939 120 Touring Sedan

Prix: 1295 \$

Capacité: 5 places



Packard 1939 Twelve Touring Sedan

Prix: 4485 \$

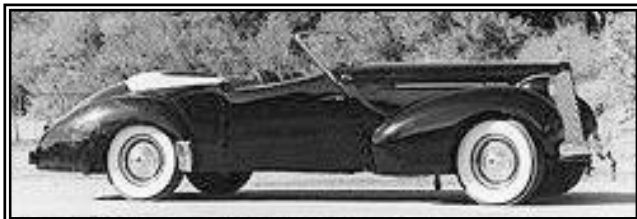
Capacité: 7 places



**Packard 1939 Super Eight
Limousine Coupé Chauffeur**

Prix: 3295 \$

Capacité: 5 places



**Packard 1939 120 Hollywood
Convertible Coupé**

Prix: 2495 \$

Capacité: 4 places

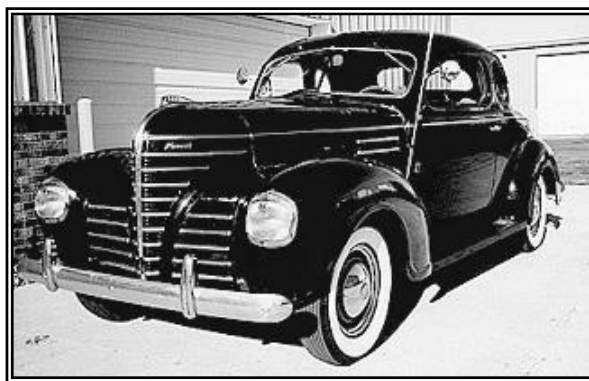


Plymouth 1939 Fordor Sedan

Prix: 790 \$

Capacité: 5 places

Plymouth 1939 Coupé



Prix: 750 \$

Capacité: 2 places



Plymouth 1939 Convertible Coupé

Prix: 895 \$

Capacité: 2 places (+ 2 en malle)