

Voitures – Année 1936

BUICK:



Buick 1936-80 Roadmaster Phaeton

Prix: 1565 \$

Capacité: 6 places



Buick 1936-40 Business Coupé

Prix: 765 \$

Capacité: 2 places

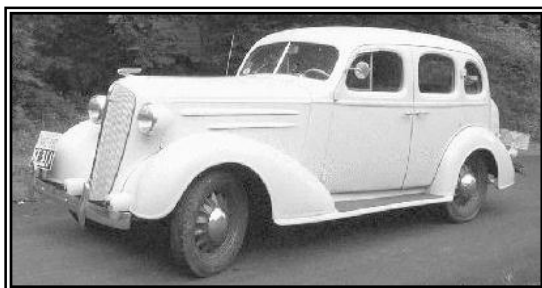
CHEVROLET:



Chevrolet 1936 Tudor Town Sedan

Prix: 535 \$

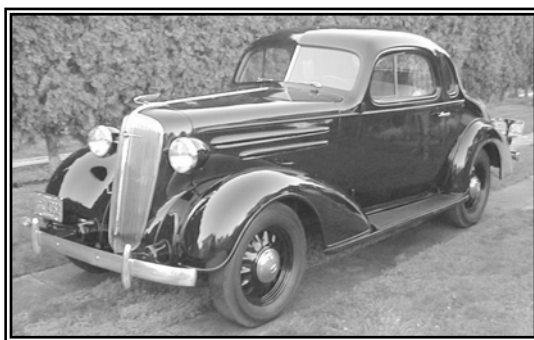
Capacité: 5 places



Chevrolet 1936 Fordor Sport Sedan

Prix: 600 \$

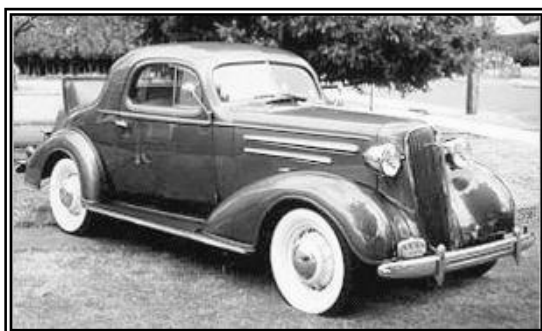
Capacité: 5 places



Chevrolet 1936 Coupé

Prix: 495 \$

Capacité: 2 places



Chevrolet 1936 DeLuxe Sport Coupé

Prix: 590 \$

Capacité: 2 places (+ 2 en malle)

Voitures – Année 1936

DODGE:



Dodge 1936 Fordor Sedan

Prix: 735 \$

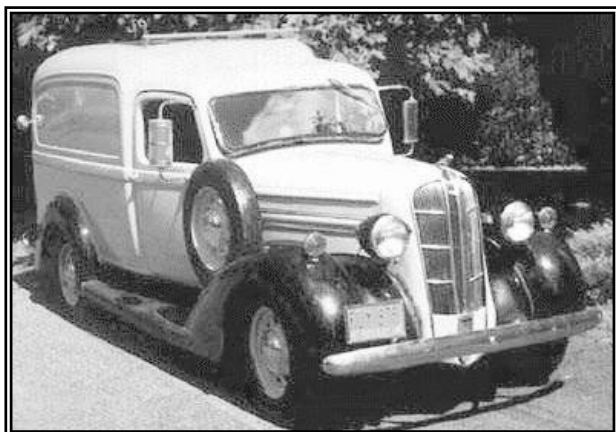
Capacité: 5 places



Dodge 1936 DeLuxe Fordor Sedan

Prix: 760 \$

Capacité: 5 places



Dodge 1936 Camionnette

Prix: 750 \$

Capacité: 2 places (+ caisson)

FORD:



Ford 1936 V8 Tudor Sedan

Prix: 545 \$

Capacité: 5 places



Ford 1936 V8 Fordor Sedan

Prix: 585 \$

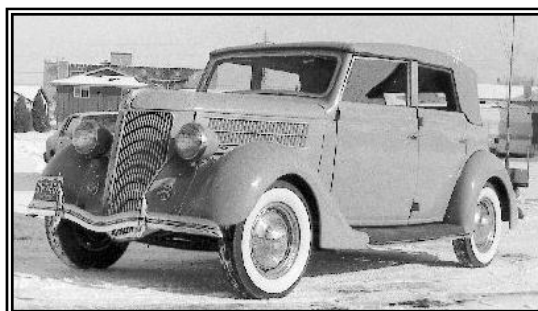
Capacité: 5 places



Ford 1936 V8 DeLuxe Fordor Sedan

Prix: 650 \$

Capacité: 5 places



Ford 1936 V8 Convertible Sedan

Prix: 760 \$

Capacité: 5 places

Voitures – Année 1936



Ford 1936 V8 Coupé

Prix: 535 \$

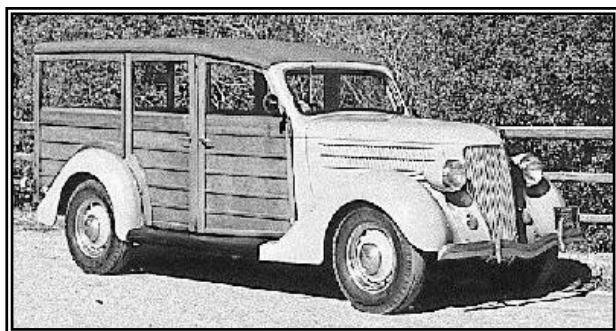
Capacité: 2 places (+ 2 en malle)



Ford 1936 V8 DeLuxe Coupé

Prix: 560 \$

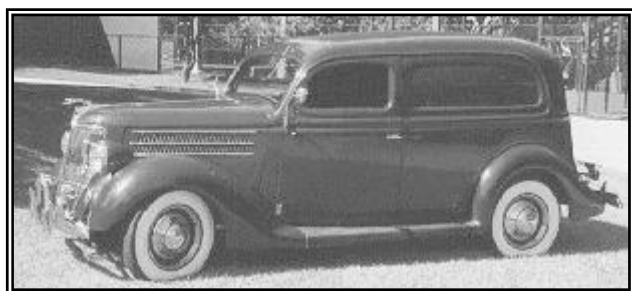
Capacité: 2 places (+ 2 en malle)



Ford 1936 V8 Woody Wagon

Prix: 670 \$

Capacité: 5 places (+ coffre)

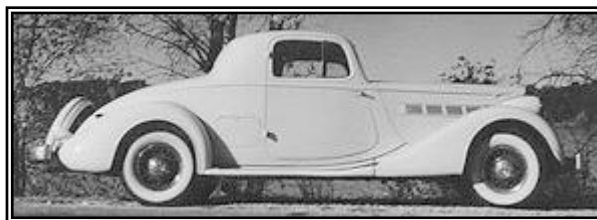


Ford 1936 V8 Sedan "Livraison"

Prix: 660 \$

Capacité: 2 places (+ coffre)

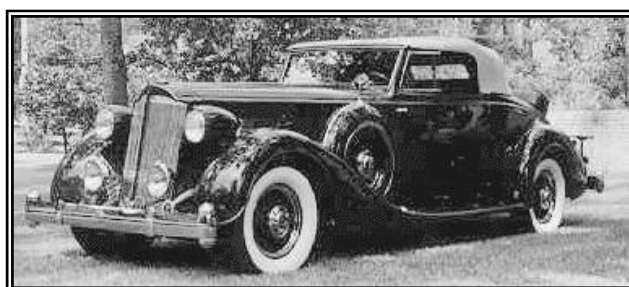
PACKARD:



Packard 1936 Eight Coupé

Prix: 2470 \$

Capacité: 2 places (+ 2 en malle)



Packard 1936 Super Eight Roadster

Prix: 3070 \$

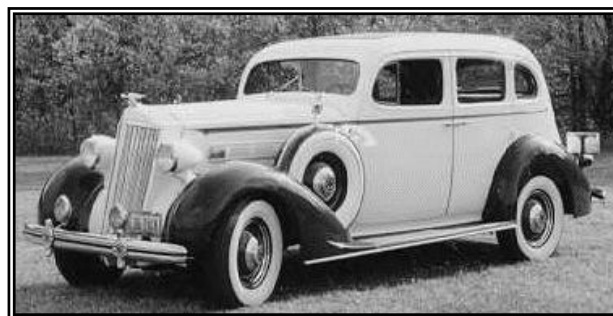
Capacité: 2 places (+ 2 en malle)



Packard 1936 120B Convert. Sedan

Prix: 1395 \$

Capacité: 5 places



Packard 1936 Eight Touring Sedan

Prix: 3270 \$

Capacité: 7 places