

THE SHOOTING PARTY



BY JOHN KEAN

The annual pheasant shoot at Leverstoke Hall is always eagerly anticipated and forms the principal topic of speculation at September soirées across four counties. This year promises to be no exception, with a large party of the region's most prominent landowners shortly to descend upon those hallowed woods for a weekend of impeccable social graces and bloody slaughter.

You, an ambitious young adventurer, are among those favoured few by simple expedient of a forged letter of introduction. And while the gentry pass the weekend in depriving the local copses of their birdlife, you plan to pass the time seducing four of their most delectable young wives, and relieving them of their jewels.

For you are such an attractive and nimble young person that success is assured, if only you can contrive some time alone with each of them. This won't be easy, under the watchful eyes of husbands and associated private secretaries.

But if it were easy then there would be no fun in it, would there?

The Shooting Party is a solitaire card game to pass the time between pheasant drives. It requires only a standard deck of cards and plays in approximately 10 minutes.

AIM

To contrive to be alone with each of four young ladies in turn, by removing all other cards from your hand on four separate occasions. Your secondary aim is for each of them to be wearing their jewels at the time so that you may pilfer them.

SETUP

These rules have been designed for use with the Edwardian custom deck. A standard deck of cards may also be used by removing one joker and ranks 6 to 10. The remaining 33 cards represent the guests with whom you may interact.

- The queens represent the four young ladies that you aim to seduce.
- The aces represent their jewels.
- The kings are their husbands and the jacks are the husbands' private secretaries.
- The included joker is the butler.
- The remaining cards (ranks 2 to 5) represent other, less attractive guests.

Note: If so inclined, the game can be played the same with genders reversed. Simply swap the roles of kings and queens and substitute "wives" for "husbands", "pocketbooks" for "jewels", etc.

GAMEPLAY

1. Shuffle the deck and place it face down as the **draw pile**.
 - Whenever you have five or fewer cards in your hand you may draw two more. This represents a pair of guests entering the room.
 - Whenever you draw an ace, place it face up on the table above the draw and discard piles and immediately draw another card to replace it in your hand. The displayed aces indicate which ladies are wearing their jewels at the time.
 - If the draw pile is exhausted, retain your hand, but thoroughly shuffle together the discards with any unscored aces to create a new draw pile. Reshuffling may only be performed twice in the course of the game.
2. Draw four cards to form **your hand**. These are the guests occupying the same room as you.
 - Discard from your hand according to the rules of etiquette overleaf. Discarding represents people leaving the room in response to your clever quip or verbal manipulation.
 - At any time you may leave the room yourself by discarding your entire hand and drawing a new hand of four cards.
3. If you succeed in reducing your hand to a single queen then you can seduce her and may lay her on the **score pile**. She will retire to her room with a headache for the rest of the weekend and will not appear again in the game.
 - If the ace of the same suit as this queen is currently displayed on the table then you may add it to the score pile as well, indicating that you successfully pocketed her jewels during the seduction.
 - Since your hand is now empty, draw a new hand of four cards.

ETIQUETTE

The rules of etiquette must be observed at all times. If, on occasion, more than one might apply, then they should be obeyed in the following order of precedence.

1. *Groups of more than seven are not conducive to agreeable discourse.*

You may draw a pair of cards only if you have five or fewer cards in your hand. Both cards must be drawn before resolving their effects.

2. *Husbands should guard their young wives from unseemly temptations by removing them from the company of attractive young men. Constant vigilance is required; husbands should not allow themselves to be distracted by business.*

If you hold a queen and king of the same suit you must immediately discard them both, unless you also hold the jack of that suit, in which case you may discard the king and jack instead.

3. *Ladies appear to best advantage when admirers are not distracted by the presence of other ladies.*

You may never hold more than one queen in your hand; the one that has been there the longest must be discarded immediately. If you draw two together then the one that was topmost in the draw pile must be discarded.

4. *Private secretaries are generally over-inquisitive young men whose prying may uncover truths which you would prefer to remain hidden.*

If you ever hold two or more jacks you must immediately discard your whole hand (i.e. leave the room) and draw another four cards.

5. *Gentlemen and ladies are most comfortable conversing with others of similar social standing on topics of mutual interest.*

You may discard exactly two cards of the same suit, for example:

2♥ + 3♥, or J♦ + 4♦, or K♣ + 5♣,

or any two or more cards of the same rank, for example:

4♣ + 4♠, or K♦ + K♠, or 2♥ + 2♣ + 2♠

6. *A sympathetic butler can be a powerful ally; often a juicy tip-off for the local greyhound races will prove sufficient to secure his loyalty.*

The joker may be discarded to retrieve one card from the discard pile, or one ace from the draw pile (place the ace face up as usual and shuffle the draw pile). Alternatively the joker may simply be discarded on its own, without needing to be paired with another card.

GAME END

The game ends when the draw pile is exhausted for the third time, or all of the queens are in the score pile.

Count up the scored cards (queens and aces). Since the jewels can only be taken during a seduction, you should never have more aces than queens in the score pile. The number of scored cards indicates your social status, from impecunious boor to filthy scoundrel:



Nº of jewels (aces)	Nº of seductions (queens)
0 = impecunious	0 = boor
1 = common	1 = cad
2 = bourgeois	2 = rake
3 = oofy	3 = bounder
4 = filthy	4 = scoundrel

The Shooting Party © John Kean, 2016
Rules version: 20160714 (Edwardian theme)



This work is licensed under a Creative Commons Attribution-NonCommercial-ShareAlike 4.0 International License

<p>Game end</p> <p>The game ends when the draw pile is exhausted for the third time, or all of the queens are in the score pile.</p> <p>Count the scored cards (queens and aces). Since the jewels can only be taken during a seduction, you should never have more aces than queens in the score pile. The number of scored cards indicates your social status, from impecunious boor to filthy scoundrel.</p>	<p>attractive young wives, and relieving them of their jewels.</p> <p>For you are such an attractive and nimble young person that success is assured, if only you can contrive some time alone with each of them. This won't be easy, under the watchful eyes of husbands and the other guests.</p> <p>But if it were easy then there would be no fun in it, would there?</p> <p>The Shooting Party is a solitaire card game to pass the time between gentry. It requires only a standard deck of cards and plays in approximately 10 minutes.</p>	<p>The annual pheasant shoot at Leverstoke Hall is always eagerly anticipated and forms the principal topic of speculation at September soirées across four counties. This year promises to be no exception, with a large party of the region's most prominent landowners shortly to descend upon those hallowed woods for a weekend of impeccable social graces and bloody slaughter.</p> <p>You, an ambitious young adventurer, are among those favoured few by simple expedient of a forged letter of introduction. And while the gentry pass the weekend in depriving the local coves of their birdlife, you plan to pass the time seducing four of their most</p>	<p>N° of jewels (aces)</p> <p>0 = impecunious 1 = common 2 = bourgeois 3 = oofy 4 = filthy</p> <p>N° of seductions (queens)</p> <p>0 = boor 1 = cad 2 = rake 3 = bouncer 4 = scoundrel</p>
<p>been there the longest must be discarded immediately. If you draw two together then the one that was topmost in the draw pile must be discarded.</p> <p>4. <i>Private secretaries are generally over-inquisitive young men whose prying may uncover truths which you would prefer to remain hidden.</i></p> <p>If you ever hold two or more jacks you must immediately discard your whole hand (i.e. leave the room) and draw another four cards.</p>	<p>together the discards with any unscored aces to create a new draw pile. Reshuffling may only be performed twice in the course of the game.</p> <p>2. Draw four cards to form your hand. This represents the guests currently occupying the same room as you.</p> <p>–Discard from your hand according to the rules of etiquette overleaf. Discarding represents people leaving the room in response to your clever quip or verbal manipulation.</p> <p>–At any time you may leave the room yourself by discarding your entire hand and drawing a new hand of four cards.</p>	<p>–Whenever you draw an ace, place it face up on the table above the draw and discard piles and immediately draw another card to replace it in your hand. The displayed aces indicate which ladies are wearing their jewels at the time.</p> <p>–If the draw pile is exhausted, retain your hand, but thoroughly shuffle</p>	<p>2. Husbands should guard their young wives from unseemly temptations by removing them from the company of attractive young men. Constant vigilance is required; husbands should not allow themselves to be distracted by business.</p> <p>If you hold a queen and king of the same suit you must immediately discard them both, unless you also hold the jack of that suit, in which case you may discard the king and jack instead.</p> <p>3. <i>Ladies appear to best advantage when admirers are not distracted by the presence of other ladies.</i></p> <p>You may never hold more than one queen in your hand; the one that has</p>
<p>11</p>	<p>7</p>	<p>2</p>	<p>15</p>
<p>10</p>	<p>6</p>	<p>5</p>	<p>10</p>

<p>5. Gentlemen and ladies are most comfortable conversing with others of similar social standing on topics of mutual interest.</p> <p>You may discard exactly two cards of the same suit, for example:</p> <p>2♥ 3♥ + 4♥ or J♦ + 4♦, or K♣ + 5♣</p> <p>or any two or more cards of the same rank, for example:</p> <p>2♥, 2♣, 2♦, 2♠, or K♥, K♦, K♣, K♠, or 4♥, 4♦, 4♣, 4♠</p> <p>21</p>	<p>Setup</p> <p>These rules have been designed for use with the Edwardian custom deck. A standard deck of cards may also be used by removing one joker and ranks 6 to 10. The remaining 33 cards represent the guests with whom you may interact.</p> <ul style="list-style-type: none"> – The queens represent the four young ladies that you aim to seduce. – The aces represent their jewels. – The kings are their husbands and the jacks are the husbands' private secretaries. – The included joker is the butler. – The remaining cards (ranks 2 to 5) represent other, less attractive guests. <p>5</p>	<p>3. If you succeed in reducing your hand to a single queen then you can seduce her and may lay her on the score pile. She will retire to her room with a headache for the rest of the weekend and will not appear again in the game.</p> <ul style="list-style-type: none"> – If the ace of the same suit as this queen is currently displayed on the table then you may add it to the score pile as well, indicating that you successfully pocketed her jewels during the seduction. – Since your hand is now empty, draw a new hand of four cards. <p>8</p>	<p>Etiquette</p> <p>The rules of etiquette must be observed at all times. If, on occasion, more than one might apply, then they should be obeyed in the following order of precedence.</p> <ol style="list-style-type: none"> 1. <i>Groups of more than seven are not conducive to agreeable discourse.</i> <p>You may draw a pair of cards only if you have five or fewer cards in your hand. Both cards must be drawn before resolving their effects.</p> <p>6</p>
<p>6. A sympathetic butler can be a powerful ally; often a juicy tip-off for the local greyhound races will prove sufficient to secure his loyalty.</p> <p>The joker may be discarded to retrieve one card from the discard pile, or one ace from the draw pile (place the ace face up as usual and shuffle the draw pile). Alternatively the joker may simply be discarded on its own, without needing to be paired with another card.</p> <p>13</p>	<p>Aim</p> <p>To contrive to be alone with each of four young ladies in turn, by removing all other cards from your hand on four separate occasions. Your secondary aim is for each of them to be wearing their jewels at the time so that you may pilfer them.</p> <p><i>Note:</i> If so inclined, the game can be played the same with genders reversed. Simply swap the roles of kings and queens and substitute "wives" for "husbands", "pocketbooks" for "jewels", etc.</p> <p>4</p>	<p style="text-align: right;">THE SHOOTING PARTY</p>  <p>by John Kean</p>	<p>This work is licensed under a Creative Commons Attribution-NonCommercial-ShareAlike 4.0 International License.</p> <p style="text-align: center;">  </p> <p style="text-align: center;">The Shooting Party © John Kean, 2016 Rules version: 20160714 (Edwardian theme)</p>

THE SHOOTING PARTY



BY JOHN KEAN

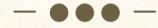
GAME PLAY:

- Shuffle the deck and place it face down on top of the shuffle counter card. This is the draw pile.
 - You may draw 2 cards if you have <6 cards in your hand.
 - If you draw an A, set it aside and draw another card to replace it.
 - If the draw pile is empty, keep your hand and shuffle the discards together with any unscored aces to create a new draw pile.
- Draw 4 cards to form your hand.
 - Discard from your hand according to the rules overleaf.
 - At any time you may discard your whole hand and draw 4 new cards.
- If you reduce your hand to a single Q then add her to the score pile, along with the A of the same suit if it has been set aside. Then draw 4 new cards.

2

END RESHUFFLE

Keep your hand, rotate this card, shuffle unscored aces into the discards and place them face down here



Keep your hand, rotate this card, shuffle unscored aces into the discards and place them face down here

1ST RESHUFFLE

A
♥



A
♥

A
♦



A
♦

J
O
K
E
R



J
O
K
E
R

A
♣



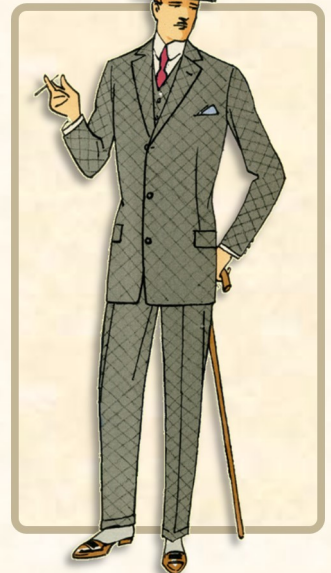
A
♣

A
♠



A
♠

K
♥

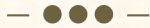


K
♥

GAME END

Count up your scored cards to determine your ranking:

No of jewels (aces)	No of seductions (queens)
0 = impecunious	0 = boor
1 = common	1 = cad
2 = bourgeois	2 = rake
3 = oofy	3 = bounder
4 = filthy	4 = scoundrel



DRAW & DISCARD RULES:

Follow these rules in order of precedence.

1. You may draw 2 cards if you hold <6.
2. If you hold a Q and K of the same suit you must discard them both, unless you also hold the J of that suit in which case you may discard the K and J instead.
3. If you have >1 Q in your hand you must discard the first that was drawn.
4. If you have >1 J in your hand you must discard the whole hand and draw 4 new cards.
5. You may discard:
 - exactly 2 cards of the same suit, or
 - any 2 or more of the same rank.
6. You may discard the joker to:
 - retrieve 1 card from the discard pile,
 - set aside 1 A from the draw pile, then re-shuffle the draw pile, or
 - take no other action (i.e. reduce your hand by 1 card).

3

AIM: To seduce the 4 young ladies* and steal their jewels

CHARACTERS:

Queens (Q) = the young ladies that you aim to seduce*

Aces (A) = their jewels

Kings (K) = their husbands*

Jacks (J) = husbands' private secretaries

Joker = the butler

Other cards (ranks 2 to 5) = other guests

Your hand = occupants of the room

Drawing cards = guests enter the room

Discarding = guests leave the room

*The game can be played the same with genders reversed. Simply swap the roles of K and Q and substitute "wives" for "husbands", "pocketbooks" for "jewels", etc.

1

THE
SHOOTING
PARTY



THE
SHOOTING
PARTY



THE
SHOOTING
PARTY



THE
SHOOTING
PARTY



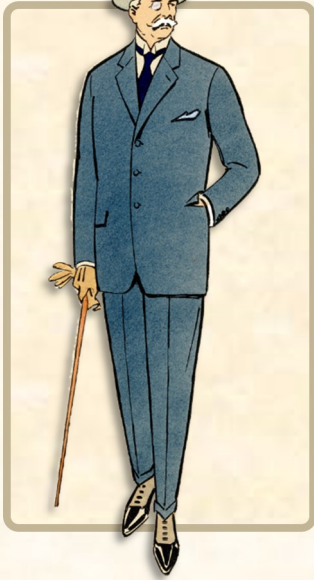
THE
SHOOTING
PARTY



THE
SHOOTING
PARTY

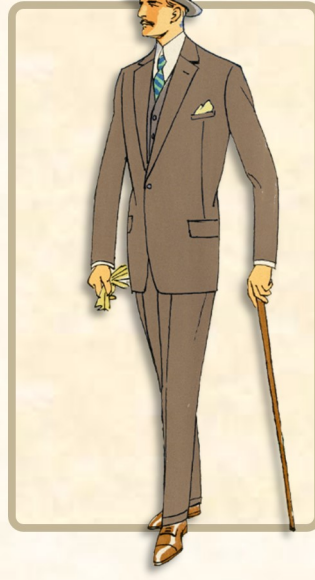


K
♦



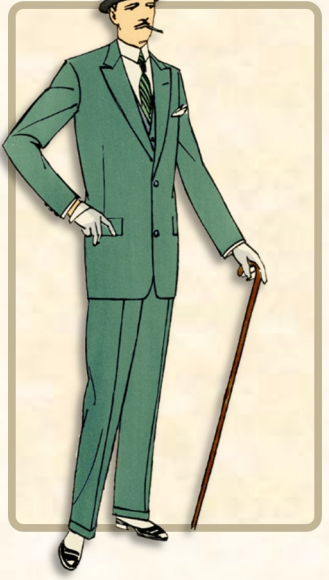
K
♦

K
♣



K
♣

K
♠



K
♠

Q
♥



Q
♥

Q
♦



Q
♦

Q
♣



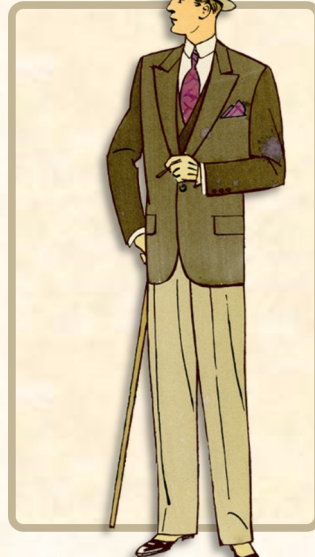
Q
♣

Q
♠



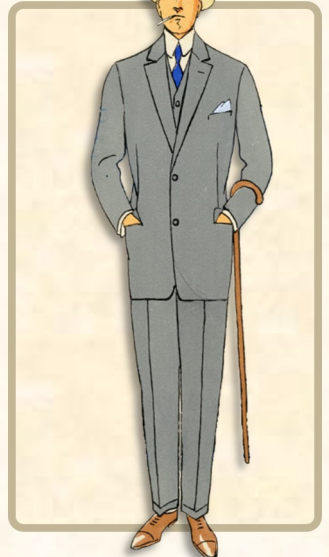
Q
♠

J
♥



J
♥

J
♦



J
♦

J ♣



J ♣

J ♠



J ♠

2 ♥



2 ♥

2 ♦



2 ♦

2 ♣



2 ♣

2 ♠



2 ♠

3 ♥



3 ♥

3 ♦



3 ♦

3 ♣



3 ♣

3
♠



3
♠

4
♥



4
♥

4
♦



4
♦

4
♣



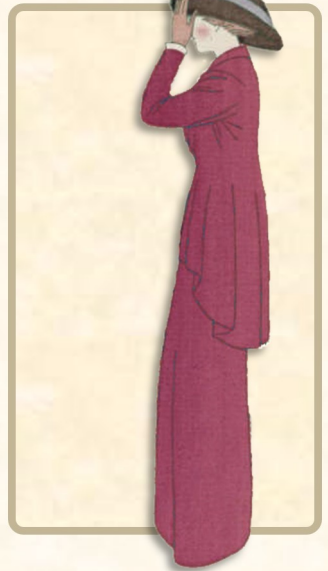
4
♣

4
♠



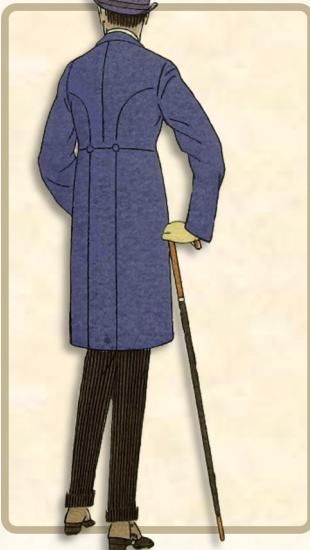
4
♠

5
♥



5
♥

5
♦



5
♦

5
♣



5
♣

5
♠



5
♠

THE
SHOOTING
PARTY



THE
SHOOTING
PARTY



THE
SHOOTING
PARTY



THE
SHOOTING
PARTY



THE
SHOOTING
PARTY



THE
SHOOTING
PARTY



THE
SHOOTING
PARTY



THE
SHOOTING
PARTY



THE
SHOOTING
PARTY



THE SHOOTING PARTY

During the annual pheasant shoot at Leverstoke Hall you, an ambitious young adventurer, plan to seduce four of the most delectable young ladies and relieve them of their jewels. All it will take is a moment alone with each of them. But his won't be easy, under the watchful eyes of their husbands and the other guests...

The Shooting Party is a solitaire card game to pass 10-15 minutes between pheasant drives.

THE SHOOTING PARTY

THE SHOOTING PARTY



BY JOHN KEAN

THE SHOOTING PARTY